



### 3 bed semi-detached house to buy in NE23

Love Avenue, Dudley, Cramlington, Tyne and Wear, NE23 7BH

**£159,950** Offers over

 x3  x1  x1

Tenure

**Freehold**

Driveway parking

### Property features

- ✓ Two reception rooms
- ✓ Open plan living room
- ✓ Southerly facing garden
- ✓ Ideal first home
- ✓ Utility room

## Key Information

- ✓ Council Tax: Band A
- ✓ Heating supply: Gas

## Arrange a viewing

Teri Dunning  
Cramlington

01670 568098  
cramlington@pattinson.co.uk

- ✓ Flexible viewing slots
- ✓ Accompanied viewings

## Description

Great location within a popular location for young families, this delightful three-bedroom home offers some fantastic features and lots of potential too, ideal for first-time buyers.

Step inside to discover a spacious open plan living room, beautifully complemented by an exposed beam, creating a perfect space for relaxing or entertaining guests. The property boasts two reception rooms, providing flexibility for a formal dining space, playroom, or perhaps a home office.

A large utility room offers valuable additional storage and practicality, while the driveway ensures convenient private parking. To the rear, a southerly facing garden awaits, perfect for summer gatherings or relaxing after a long day.

Enjoy the benefits of excellent local amenities, with highly regarded schools just a short stroll away, making this a prime spot for families. The area is further enhanced by fantastic road links, offering easy access to both Newcastle city centre and the stunning North East coast. Shops, parks, and leisure facilities are also within easy reach, ensuring a vibrant and connected community lifestyle.

Don't miss the opportunity to make this charming house your new home. Arrange a viewing today and discover everything it has to offer.

Council Tax Band: A

Tenure: Freehold

Price: Offers over £159,950

Property Type: Semi-detached house

Parking: Driveway

Heating: Gas

## Living room



## Dining Room



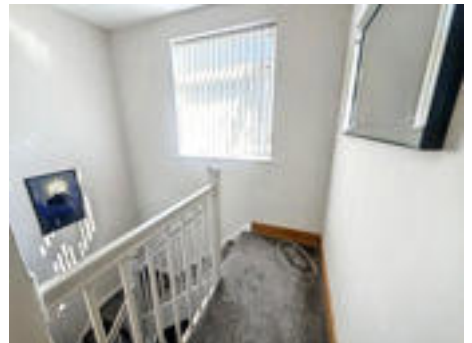
## Kitchen



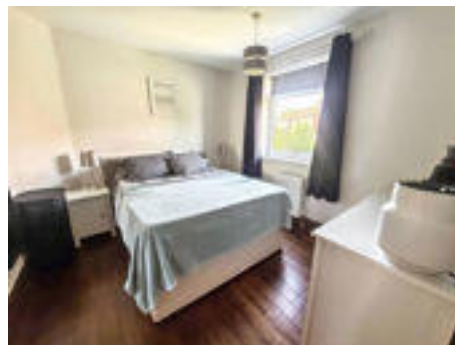
## Utility room



## Landing



## Bedroom 1



---

## Bedroom 2



---

## Bedroom 3

---

## Bathroom

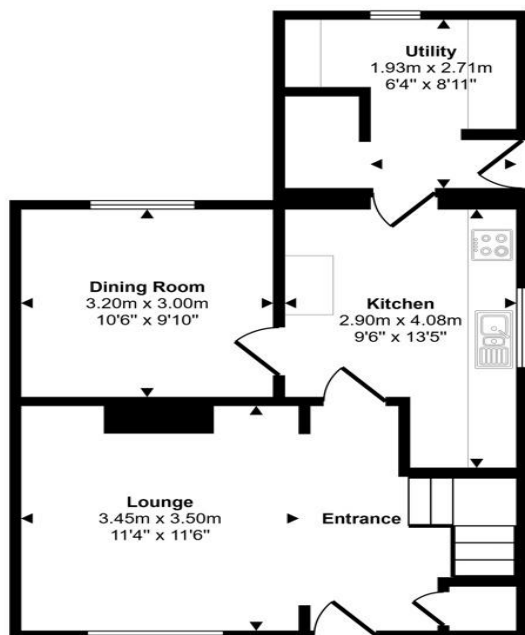


---

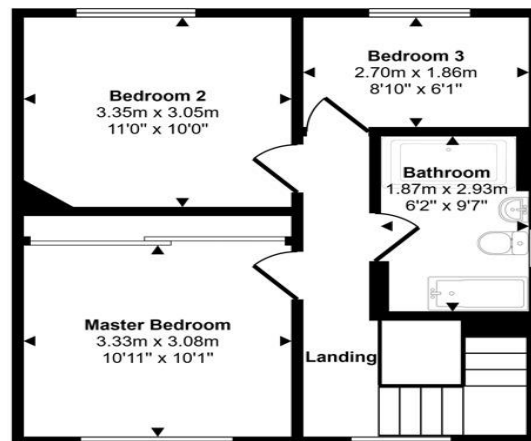
## External



Approx Gross Internal Area  
93 sq m / 999 sq ft



Ground Floor  
Approx 50 sq m / 539 sq ft



First Floor  
Approx 43 sq m / 460 sq ft

This floorplan is only for illustrative purposes and is not to scale. Measurements of rooms, doors, windows, and any items are approximate and no responsibility is taken for any error, omission or mis-statement. Icons of items such as bathroom suites are representations only and may not look like the real items. Made with Made Snappy 360.

Love Avenue, Dudley, Cramlington, Tyne and Wear, NE23 7BH

Contact your local branch today for more information on this property:

**Blagdon House Smithy Square, Cramlington, Northumberland, NE23 6QL, Tel: 01670 568098,  
cramlington@pattinson.co.uk, www.pattinson.co.uk**

These particulars, whilst believed to be accurate are set out as a general outline only for guidance and do not constitute any part of an offer or contract. Intending purchasers should not rely on them as statements of representation of fact, but must satisfy themselves by inspection or otherwise as to their accuracy. No person in this firm's employment has the authority to make or give any representation or warranty in respect of the property.

