



1 bed studio flat to buy in BS23

Baker Street, Weston-super-Mare,
Somerset, BS23 3AQ

£35,000 Starting Bid


 x1  x1  x1

Tenure

Leasehold

Allocated parking

Property features

-  BEING SOLD VIA SECURE SALE
ONLINE BIDDING - T&Cs APPLY
-  One Double Bedroom
-  Retirement Property - Residents
over 60
-  First Floor Flat
-  EPC Rating C

Key Information

- ✓ Council Tax: Band A
- ✓ EPC Rating: C
- ✓ Heating supply: Electric
- ✓ Electric supply: National Grid
- ✓ Water supply: Direct mains water
- ✓ Broadband: FTTP (fibre to the premises)
- ✓ Mobile signal: Good

Arrange a viewing

Felix Keene
Branch Manager
South West Auction

023 8251 4032
southwest@pattinson.co.uk

- ✓ Flexible viewing slots
- ✓ Accompanied viewings

Description

Being Sold via Secure Sale online bidding. Terms & Conditions apply. Starting Bid £35,000. Looking for a buy-to-let opportunity? Then this over 60`'s retirement property with tenant in situ may well be the one for you. Lift and stair access to the first floor, entrance hall, lounge with balcony, modern fitted kitchen, double bedroom and bathroom. Ideally located for the town centre.

COMMUNALE ENTRANCE

Via secure entry. Lift and stair access to the first floor. Door into;

ENTRANCE HALL

Wall mounted phone entry system. Cupboard housing hot water cylinder. Doors to all principal rooms.

LOUNGE - 13'0" (3.96m) x 11'5" (3.48m)

Front aspect uPVC sliding patio door to balcony. TV point, laminate wood floor. Wall mounted fireplace. Door to;

KITCHEN BREAKFAST ROOM - 11'0" (3.35m) x 9'9" (2.97m)

Front aspect uPVC double glazed window. Fitted with a range of eye and base level units with rolled edge worktop surface over. Inset single drainer stainless steel sink with extendible mixer tap. Built in oven and hob. Space for fridge. Ample space for table. Wall mounted heater.

DOUBLE BEDROOM - 11'0" (3.35m) x 9'9" (2.97m)

Side aspect uPVC double glazed window. Wall mounted heater.

BATHROOM

A modern suite comprising panel bath with mixer taps and hand held shower attachment. Low level WC and pedestal wash hand basin. Tiled splash backs. heated towel rail.

AGENTS NOTE

£4400 MANAGEMENT FEES P/ANNUUM

CURRENTLY TENANTED PAYING £825 PCM

BEING SOLD WITH TENANT IN SITU

For sale through Pattinson Auction under Conditional Terms.

Council Tax Band: A

Tenure: Leasehold

Length of Lease: 88

Annual Ground Rent Amount: £173.00

Annual Service Charge Amount: £4,400.00

Price: Starting Bid £35,000

Property Type: Studio flat

Parking: Allocated

Construction materials: Brick and block

Roofing type: Clay tiles

Flooded in last 5 years: No

Planning permissions or proposals for development: No

Coalfield or mining area: No

Listed property: No

Conservation area: No

Public rights of way: No

Adaptions for accessibility: No

Restrictions: Yes

Required access: No

Heating: Electric

Electric: National Grid

Water: Direct mains water

Water meter: No

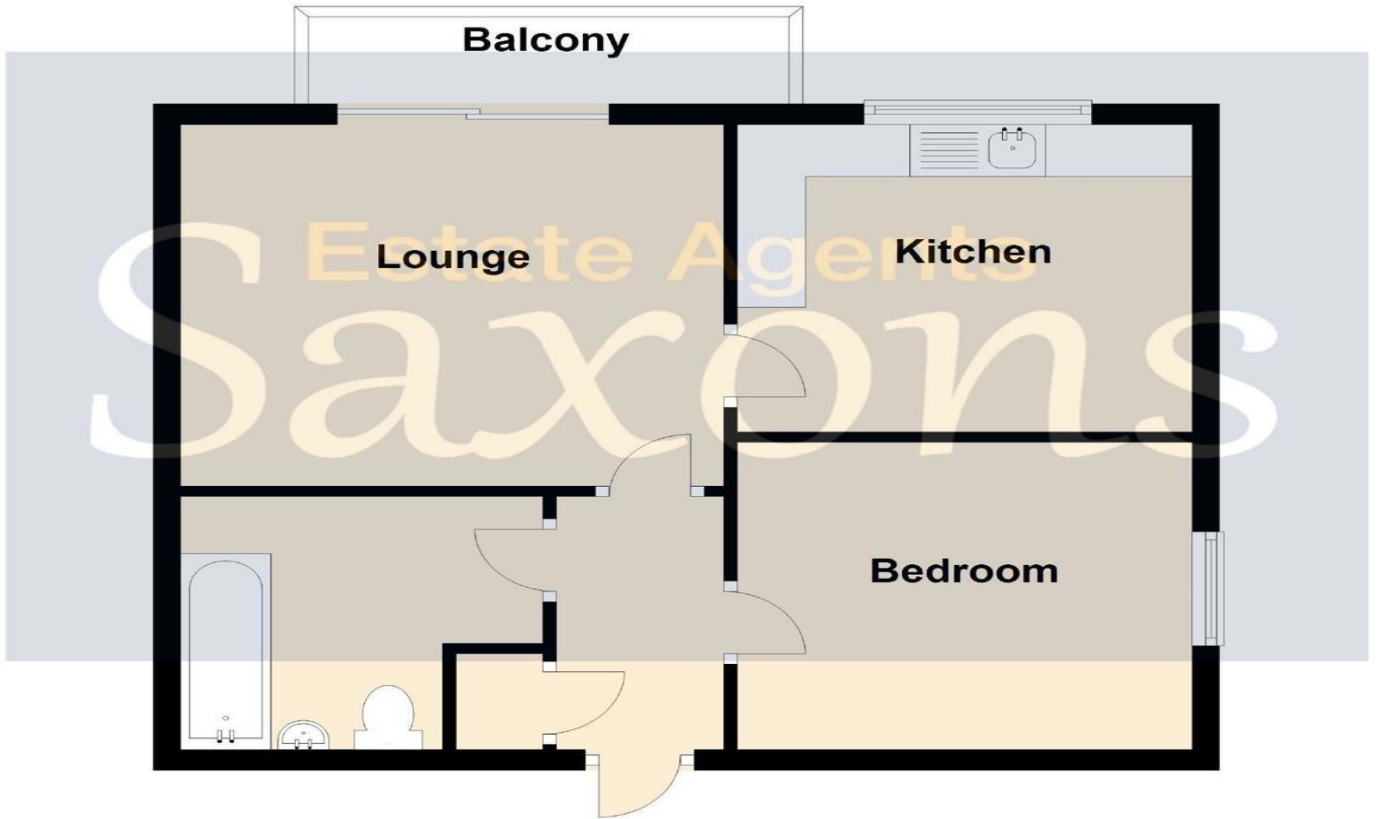
Sewerage: Standard UK domestic


Air conditioning: No

Broadband: FTTP (fibre to the premises)

Mobile signal coverage: Good

First Floor



Energy Efficiency Rating		
	Current	Potential
<i>Very energy efficient - lower running costs</i>		
(92-100) A		
(81-91) B		
(69-80) C	71	80
(55-68) D		
(39-54) E		
(21-38) F		
(1-20) G		
<i>Not energy efficient - higher running costs</i>		
England, Scotland & Wales	EU Directive 2002/91/EC 	

Baker Street, Weston-super-Mare, Somerset, BS23 3AQ

Contact your local branch today for more information on this property:

Mercantile House Kingfisher Way Silverlink Business Park, Wallsend, Wallsend, Wallsend, NE28 9NY,
Tel: 023 8251 4032, southwest@pattinson.co.uk, www.pattinson.co.uk

These particulars, whilst believed to be accurate are set out as a general outline only for guidance and do not constitute any part of an offer or contract. Intending purchasers should not rely on them as statements of representation of fact, but must satisfy themselves by inspection or otherwise as to their accuracy. No person in this firm's employment has the authority to make or give any representation or warranty in respect of the property.

