



5 bed maisonette to buy in NE8

Deckham Terrace, Gateshead, Tyne and Wear, NE8 3UY

£100,000 Guide Price

🛏 x5 🚿 x1 🚻 x1

Tenure

Leasehold

On Street parking

Property features

- ✓ 5 Bedroom Maisonette
- ✓ Lounge/ Diner
- ✓ UPVC Double Glazing
- ✓ Gas Central Heating
- ✓ EPC Rating D

Key Information

- ✓ Council Tax: Band A
- ✓ EPC Rating: D
- ✓ Heating supply: Gas

Arrange a viewing

Phil Whiteside
Branch Manager
Low Fell

0191 4878898
low.fell@pattinson.co.uk

- ✓ Flexible viewing slots
- ✓ Accompanied viewings

Description

A spacious five bedroom maisonette, ideally located within easy reach of the excellent amenities of Low Fell and well served by regular public transport links providing convenient access to Newcastle, Gateshead and Durham. Offering generous accommodation over two floors, this property presents a potential rental opportunity or buyers looking for a spacious home.

The property benefits from UPVC double glazing, gas central heating and enjoys pleasant elevated views to the rear.

The accommodation comprises an entrance lobby with stairs leading to the first floor, where there is a spacious lounge/dining room, a fitted kitchen with access via steps down to the private rear yard, and two well proportioned bedrooms. To the second floor there are three further bedrooms and a family bathroom.

Council Tax Band: A

Tenure: Leasehold

Length of Lease: 996

Price: Guide Price £100,000

Property Type: Maisonette

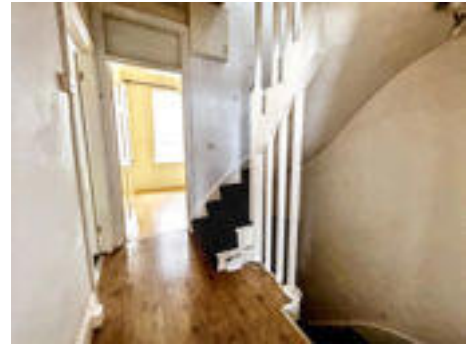
Parking: On Street

Heating: Gas

Entrance Lobby

Stairs to the first floor

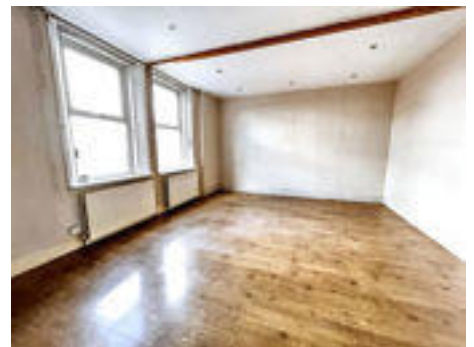
First Floor Landing



Lounge/Dining Room

5.80m x 4.30m (19'0" x 14'1")

Two UPVC double glazed windows, two radiators, built in storage cupboard



Kitchen

3.90m x 2.40m (12'9" x 7'10")

Fitted wall and base units, stainless steel one and a half bowl sink and drainer with mixer tap, gas hob with extractor over, built in electric oven, space for automatic washing machine, UPVC double glazed window, radiator



Bedroom One

4.00m x 4.40m (13'1" x 14'5")

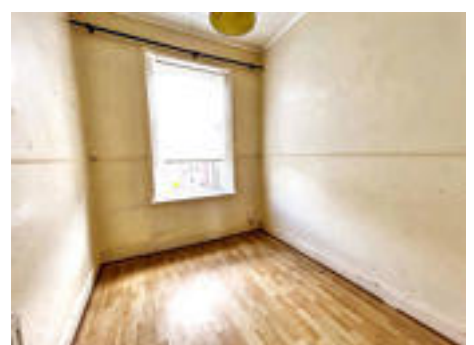
Built in cupboards to alcoves, two UPVC double glazed windows, radiator



Bedroom Four

2.70m x 2.30m (8'10" x 7'6")

UPVC double glazed window, radiator



Second Floor Landing

Skylight



Bedroom Two

4.40m x 3.90m (14'5" x 12'9")

UPVC double glazed window, radiator, great views



Bedroom Three

4.40m x 3.80m (14'5" x 12'5")

UPVC double glazed window, radiator



Bathroom

2.40m x 2.50m (7'10" x 8'2")

Four piece suite comprising a corner bath, WC, wash basin, corner shower with mains fed shower, skylight



Bedroom Five

2.70m x 2.40m (8'10" x 7'10")

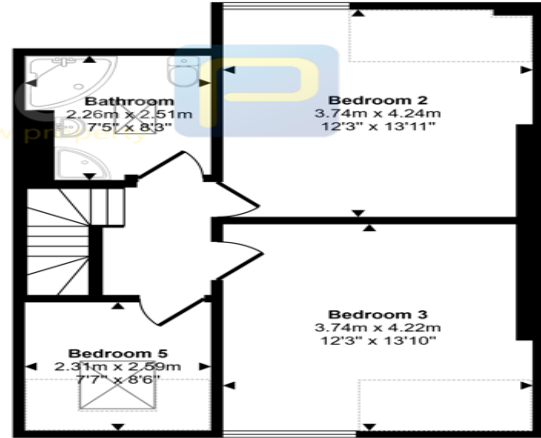
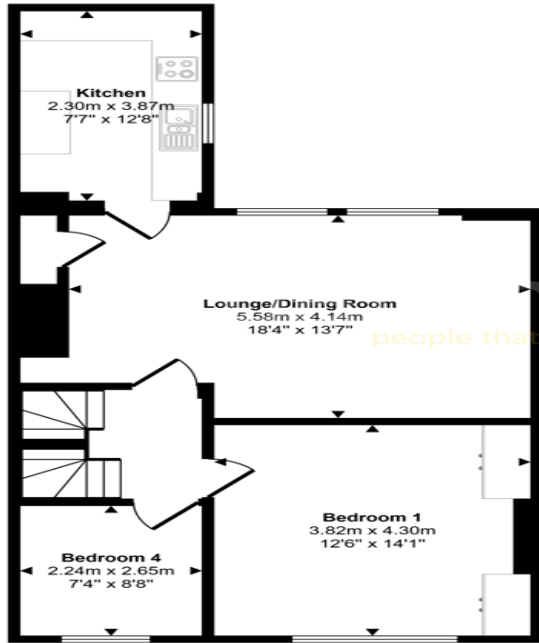
Radiator, skylight



External

Yard to the rear

Approx Gross Internal Area
114 sq m / 1226 sq ft



Denotes head height below 1.5m

This floorplan is only for illustrative purposes and is not to scale. Measurements of rooms, doors, windows, and any items are approximate and no responsibility is taken for any error, omission or mis-statement. Icons of items such as bathroom suites are representations only and may not look like the real items. Made with Made Snappy 360.

Energy Efficiency Rating		Current	Potential
Very energy efficient - lower running costs			
(92-100) A			
(81-91) B			
(69-80) C			74
(55-68) D		66	
(39-54) E			
(21-38) F			
(1-20) G			
Not energy efficient - higher running costs			
England, Scotland & Wales		EU Directive 2002/91/EC	

Deckham Terrace, Gateshead, Tyne and Wear, NE8 3UY

Contact your local branch today for more information on this property:

**425 Durham Road, Low Fell, Tyne & Wear, Gateshead, NE9 5AN, Tel: 0191 4878898,
low.fell@pattinson.co.uk, www.pattinson.co.uk**

These particulars, whilst believed to be accurate are set out as a general outline only for guidance and do not constitute any part of an offer or contract. Intending purchasers should not rely on them as statements of representation of fact, but must satisfy themselves by inspection or otherwise as to their accuracy. No person in this firm's employment has the authority to make or give any representation or warranty in respect of the property.

