



### 3 bed detached house to buy in

Welbeck Street, Kirkby-in-Ashfield,  
Nottingham, Nottinghamshire, NG17 7GT

**£135,000** Starting Bid

 x3  x1  x1

Tenure

**Freehold**

Driveway & Garage parking

### Property features

- ✓ Being Sold via Secure Sale online bidding. Terms & Conditions apply.
- ✓ Immediate 'exchange of contracts' available
- ✓ Land with detached three-bedroom house (derelict)
- ✓ Full renovation or redevelopment opportunity (STPP)
- ✓ EPC Rating G

## Key Information

- ✓ Council Tax: Band B
- ✓ EPC Rating: G
- ✓ Heating supply: No Heating
- ✓ Electric supply: National Grid
- ✓ Water supply: Direct mains water
- ✓ Broadband: None
- ✓ Mobile signal: Good

## Arrange a viewing

Joe Nicholson  
Branch Manager  
Midlands Auction

0121 661 8465  
midlands@pattinson.co.uk

- ✓ Flexible viewing slots
- ✓ Accompanied viewings

## Description

\*\*\*AUCTION\*\*\* Being Sold via Secure Sale online bidding. Terms & Conditions apply.

\*\*\* PLANNING PERMISSION FOR A THREE BEDROOM DETACHED PROPERTY WITH GARAGE \*\*\*

This property will be legally prepared enabling any interested buyer to secure the property immediately once their bid/offer has been accepted. Ultimately a transparent process which provides speed, security and certainty for all parties.

Land for Sale with Detached Derelict Three-Bedroom House Excellent Development Opportunity An increasingly rare opportunity to acquire a generous parcel of land featuring a detached three-bedroom house in a derelict condition, offering significant potential for redevelopment, renovation, or a bespoke new-build project (subject to the necessary planning permissions). The existing property sits within the plot and requires full refurbishment or replacement, making it ideal for developers, investors, or buyers seeking to create a custom home tailored to their exact specifications. The land benefits from established access and is already connected to all main services, including water, electricity, and drainage, providing a strong foundation for any future development and reducing initial setup costs and complexity. Set in a good location, the plot offers scope to maximise value through thoughtful design and planning. Whether restoring the current structure or starting afresh, this site presents a versatile and appealing investment opportunity.

Pattinson Auction are working in Partnership with the marketing agent on this online auction sale and are referred to below as 'The Auctioneer'.

Council Tax Band: B

Tenure: Freehold

Price: Starting Bid £135,000

Property Type: Detached House

Parking: Driveway & Garage

Construction materials: Brick and block

Roofing type: Slate tiles

Risk of floods and or erosion: No

Flooded in last 5 years: No

Flood defences: No

Planning permissions or proposals for development: No

Coalfield or mining area: No

Listed property: No

Conservation area: No

Public rights of way: No

Adaptions for accessibility: No

Restrictions: No

Required access: No

Heating: No Heating

Electric: National Grid

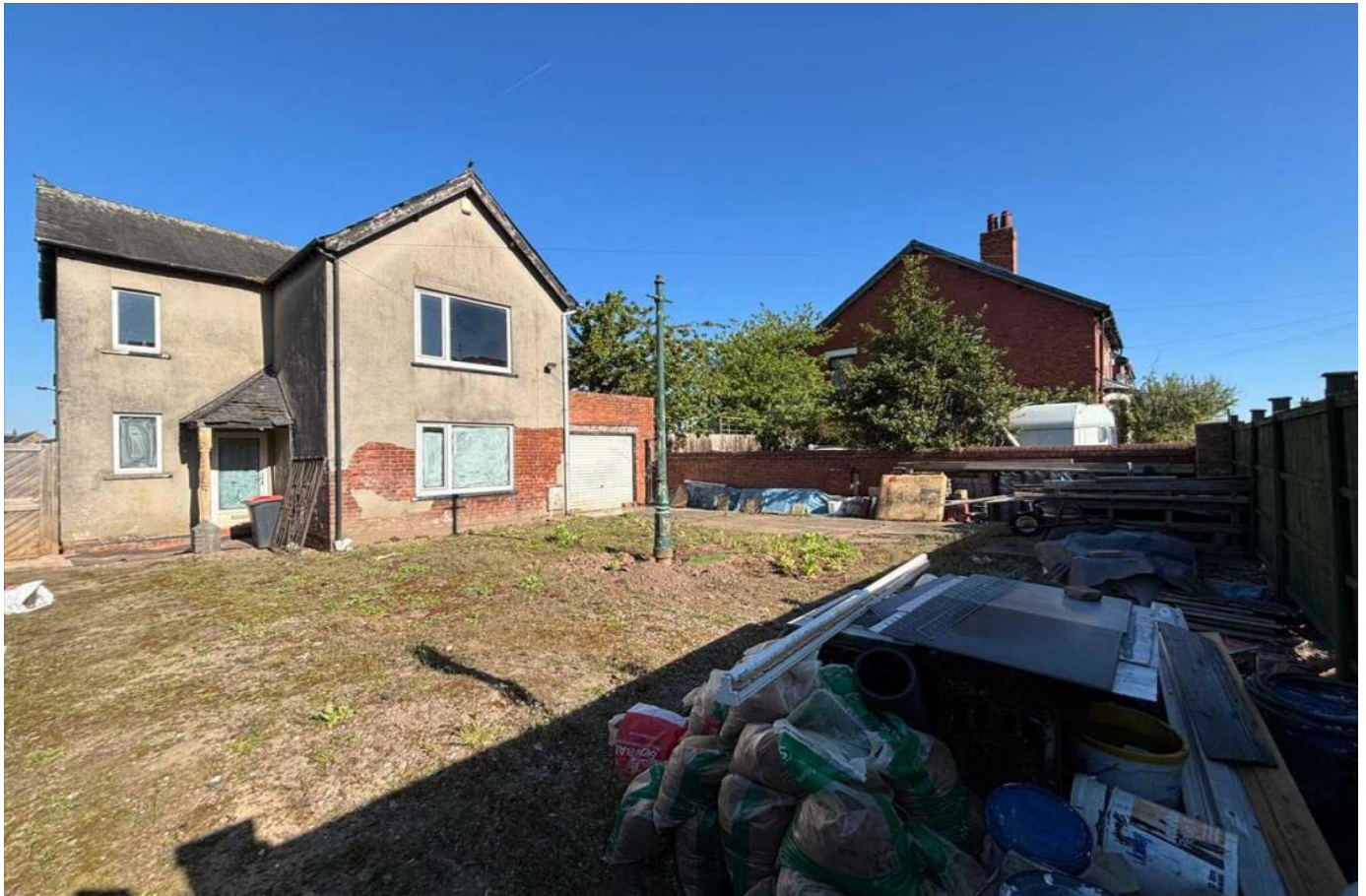
Water: Direct mains water


Sewerage: Standard UK domestic

Air conditioning: No

Broadband: None

Mobile signal coverage: Good



Energy Efficiency Rating		
	Current	Potential
<i>Very energy efficient - lower running costs</i>		
(92-100) <b>A</b>		
(81-91) <b>B</b>		
(69-80) <b>C</b>		75
(55-68) <b>D</b>		
(39-54) <b>E</b>		
(21-38) <b>F</b>		
(1-20) <b>G</b>	1	
<i>Not energy efficient - higher running costs</i>		
<b>England, Scotland &amp; Wales</b>		EU Directive 2002/91/EC 

Welbeck Street, Kirkby-in-Ashfield, Nottingham, Nottinghamshire, NG17 7GT

Contact your local branch today for more information on this property:

**Mercantile House Silverlink, Wallsend, Tyne and Wear, NE28 9NY, Tel: 0121 661 8465,  
midlands@pattinson.co.uk, www.pattinson.co.uk**

These particulars, whilst believed to be accurate are set out as a general outline only for guidance and do not constitute any part of an offer or contract. Intending purchasers should not rely on them as statements of representation of fact, but must satisfy themselves by inspection or otherwise as to their accuracy. No person in this firm's employment has the authority to make or give any representation or warranty in respect of the property.

