



3 bed terraced house to buy in

Findon Hill, Sacriston, Durham, Durham,
DH7 6LS

£187,500 Offers Over

 x3  x1  x2

Tenure

Freehold

On Street parking

Property features

- ✓ Three Bedrooms
- ✓ New Kitchen
- ✓ Built in Bar
- ✓ Close to Local Amenities
- ✓ EPC Rating D

Key Information

- ✓ Council Tax: Band A
- ✓ EPC Rating: D
- ✓ Heating supply: Gas

Arrange a viewing

Kathryn Greensmith
Branch Manager
Durham City

0191 3832133
durham@pattinson.co.uk

- ✓ Flexible viewing slots
- ✓ Accompanied viewings

Description

This beautifully modernised three-bedroom terraced home is ideally situated on the highly sought-after Findon Hill in Sacriston, offering spacious and versatile living throughout.

Upon arrival, the property boasts a charming low-maintenance gated front garden, finished with high-quality Astro turf, creating an attractive and welcoming first impression. Internally, the home opens into a generous entrance hall, leading to a spacious and well-presented living room, alongside an additional reception room which offers flexibility for use as a dining room, home office, or second lounge.

The property further benefits from a newly fitted modern kitchen, thoughtfully designed with contemporary finishes and ample storage, making it perfect for everyday living and entertaining.

To the first floor, there are three well-proportioned double bedrooms, all offering comfortable accommodation, along with a stylish four-piece family bathroom suite.

Externally, the rear of the property truly stands out, featuring a fantastic converted bar complete with electricity and a WC, providing the perfect space for entertaining guests all year round. In addition, there is a large rear yard offering plenty of room for outdoor seating and social gatherings.

This exceptional home combines modern living with generous space, making it an ideal purchase for families and professionals alike.

Council Tax Band: A

Tenure: Freehold

Price: Offers Over £187,500

Property Type: Terraced House

Parking: On Street

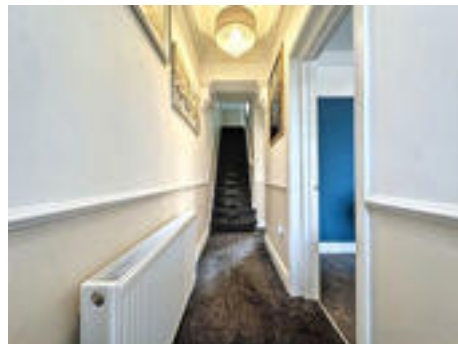
Heating: Gas

External Front



Entrance Hall

4.616m x 0.973m (15'1" x 3'2")



Living Room

4.411m x 4.185m (14'5" x 13'8")



Reception Room

4.649m x 4.17m (15'3" x 13'8")



Kitchen

4.195m x 2.172m (13'9" x 7'1")



First Floor Landing

5.608m x 1.798m (18'4" x 5'10")



Bedroom 1

4.271m x 3.668m (14'0" x 12'0")



Bedroom 2

4.329m x 3.098m (14'2" x 10'1")



Bedroom 3

3.16m x 2.34m (10'4" x 7'8")



Bathroom

4.172m x 2.15m (13'8" x 7'0")



Bar

4.11m x 2.642m (13'5" x 8'8")



WC

1.492m x 1.209m (4'10" x 3'11")



Exterior Yard





Energy Efficiency Rating		
	Current	Potential
<i>Very energy efficient - lower running costs</i>		
(92-100) A		
(81-91) B		
(69-80) C		80
(55-68) D	65	
(39-54) E		
(21-38) F		
(1-20) G		
<i>Not energy efficient - higher running costs</i>		
England, Scotland & Wales	EU Directive 2002/91/EC	

Findon Hill, Sacriston, Durham, Durham, DH7 6LS

Contact your local branch today for more information on this property:

**105 Gilesgate, Durham City, County Durham, Tyne & Wear, DH1 1JA, Tel: 0191 3832133,
durham@pattinson.co.uk, www.pattinson.co.uk**

These particulars, whilst believed to be accurate are set out as a general outline only for guidance and do not constitute any part of an offer or contract. Intending purchasers should not rely on them as statements of representation of fact, but must satisfy themselves by inspection or otherwise as to their accuracy. No person in this firm's employment has the authority to make or give any representation or warranty in respect of the property.

