



5 bed detached house to buy in

Nunnery Fields, Canterbury, Kent, CT1 3JT

£430,000 Starting Bid

 x5  x3  x3

Tenure

Freehold

Driveway parking

Property features

- ✓ Large Period Family Home
- ✓ Great central location
- ✓ Parking for two cars
- ✓ Close to Secondary Schools
- ✓ EPC Rating E

Key Information

- ✓ Council Tax: Band E
- ✓ EPC Rating: E
- ✓ Electric supply: National Grid
- ✓ Water supply: Direct mains water
- ✓ Broadband: FTTC (fibre to the cabinet)
- ✓ Mobile signal: Good

Arrange a viewing

Thomas Jack Smith
Branch Manager
South East Auction

01634 565510
southeast@pattinson.co.uk

- ✓ Flexible viewing slots
- ✓ Accompanied viewings

Description

Set across multiple floors and extending to approximately 1,700sqft the property provides flexible living space and a layout well-suited to modern family life.

The ground floor comprises a welcoming entrance hallway leading to a bright living room, separate office/study, and a dining room connecting through to the kitchen. To the rear, a long laundry/utility room offers additional practical space with scope for reconfiguration or extension (subject to permissions).

The cellar level provides useful storage or potential for further development, measuring approximately 10'1" x 10'6", ideal for conversion into additional living accommodation, a home gym, or workspace (STPP).

Upstairs, the first floor features two well-sized bedrooms, a further office/bedroom, and a family bathroom, while the second floor offers additional bedroom space and bathroom facilities, making the property suitable for growing families or multi-functional living arrangements.

While the home is structurally spacious and full of character, it is clear that the property requires modernisation throughout. Kitchens, bathrooms, and décor would benefit from updating, presenting an excellent opportunity for buyers to add value and tailor the finish to their own taste.

Externally, the property benefits from off-street parking and a traditional façade, enhancing its kerb appeal.

Council Tax Band: E

Tenure: Freehold

Price: Starting Bid £430,000

Property Type: Detached House

Parking: Driveway

Year built: 1901

Construction materials: Brick and block

Roofing type: Clay tiles, Flat

Risk of floods and or erosion: No

Flooded in last 5 years: No

Flood defences: No

Planning permissions or proposals for development: No

Coalfield or mining area: No

Listed property: No

Conservation area: No

Public rights of way: No

Adaptions for accessibility: Yes

Restrictions: No

Required access: No

Electric: National Grid

Water: Direct mains water

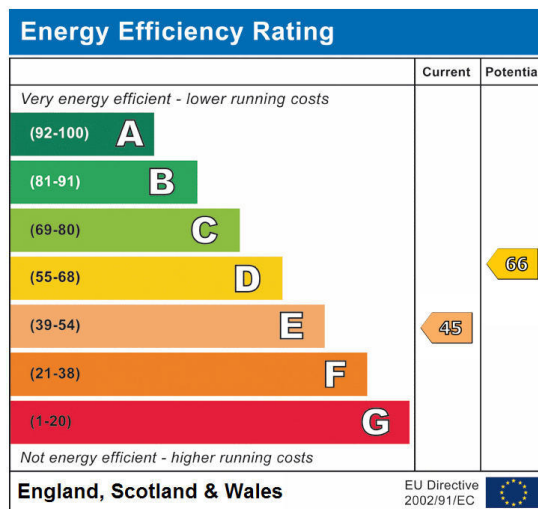
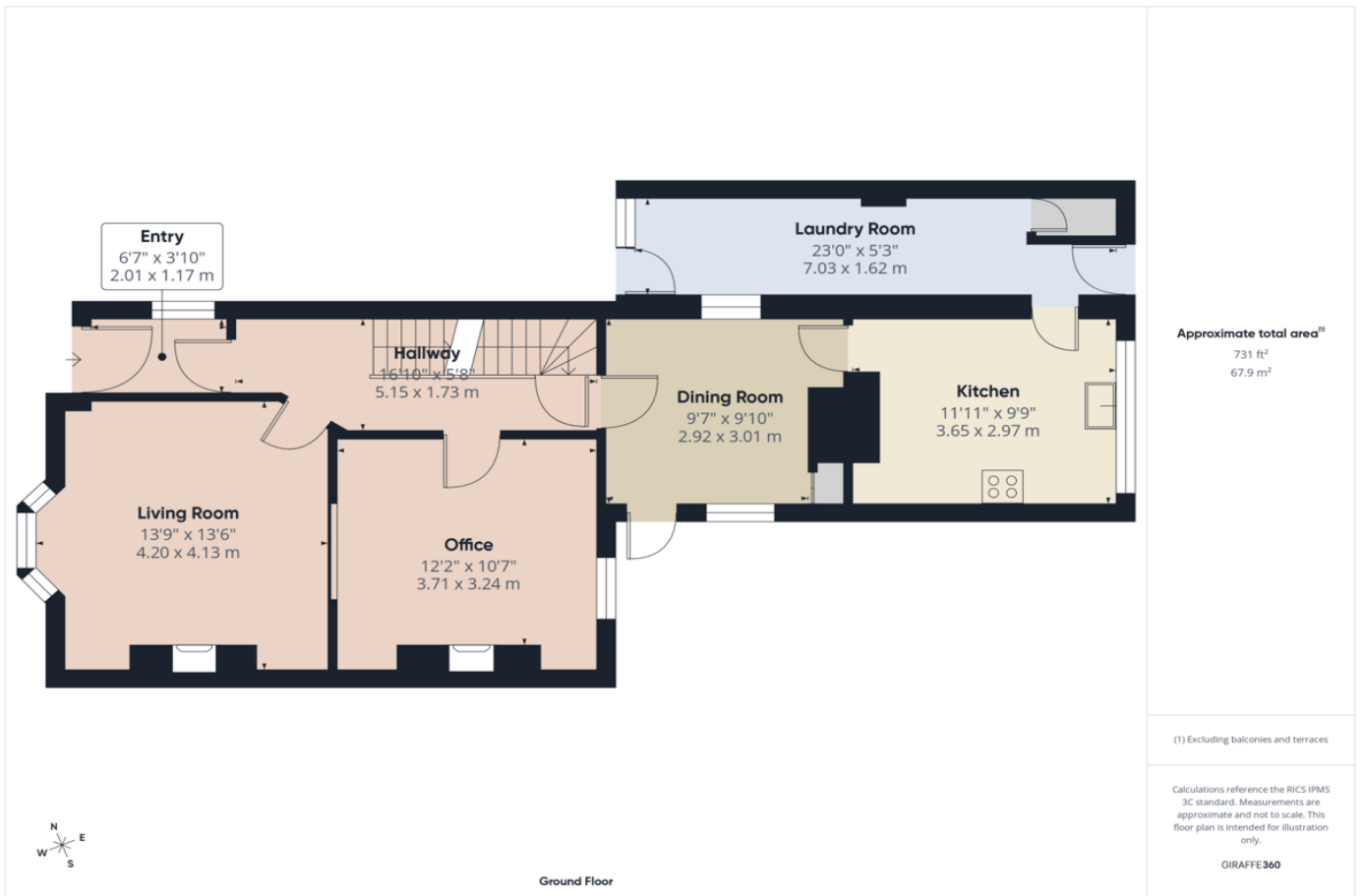
Water meter: Yes

Sewerage: Standard UK domestic

Air conditioning: No

Broadband: FTTC (fibre to the cabinet)

Mobile signal coverage: Good



Nunnery Fields, Canterbury, Kent, CT1 3JT

Contact your local branch today for more information on this property:

Mercantile House Kingfisher Way , Silverlink Business Park, Wallsend, NE28 9NY, Tel: 01634 565510, southeast@pattinson.co.uk, www.pattinson.co.uk

These particulars, whilst believed to be accurate are set out as a general outline only for guidance and do not constitute any part of an offer or contract. Intending purchasers should not rely on them as statements of representation of fact, but must satisfy themselves by inspection or otherwise as to their accuracy. No person in this firm's employment has the authority to make or give any representation or warranty in respect of the property.

