

3 bed terraced house to buy in

Derwent Street, Hartlepool, Durham, TS26 8BE






£65,000 Starting Bid

 x3  x1  x1

Tenure
Freehold

On Street parking

Property features

-  Offered With No Forward Chain
-  Three Bedroom Mid Terrace
-  Close to Local Amenities and Transport Links
-  Courtyard To Rear
-  EPC Rating D

Key Information

- ✓ Council Tax: Band A
- ✓ EPC Rating: D
- ✓ Heating supply: Gas

Arrange a viewing

Melanie Devine
Branch Manager
Stockton On Tees

01642 210132
stockton@pattinson.co.uk

- ✓ Flexible viewing slots
- ✓ Accompanied viewings

Description

This three-bedroom mid-terrace property on Derwent Street, Hartlepool, presents an excellent opportunity for first-time buyers, families, or investors alike. Situated in a popular residential area, the home is well placed for access to local amenities, schools, and transport links.

The property briefly comprises an entrance vestibule and hallway leading to a spacious lounge, kitchen/diner and ground floor bathroom. To the first floor, there are three good-sized bedrooms, offering ample space for a growing family or those in need of additional room for home working.

Externally, the property benefits from an enclosed rear yard, providing a low-maintenance outdoor space.

Offering generous accommodation and plenty of potential, early viewing is recommended.

Council Tax Band: A

Tenure: Freehold

Price: Starting Bid £65,000

Property Type: Terraced House

Parking: On Street

Heating: Gas

Entrance

Hallway

Lounge

3.86m x 3.69m (12'7" x 12'1")



Kitchen/Dining Area

5.43m x 2.39m (17'9" x 7'10")



Bathroom W/C

2.23m x 2.05m (7'3" x 6'8")



Stairs to First Floor



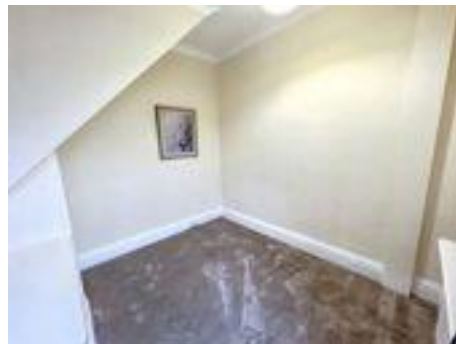
Bedroom One

4.43m x 3.12m (14'6" x 10'2")



Bedroom Two

2.82m x 2.57m (9'3" x 8'5")

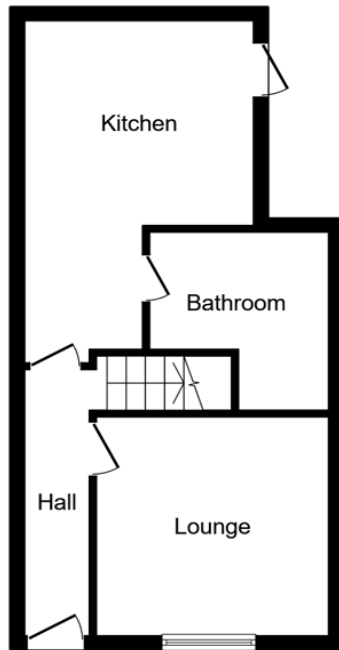


Bedroom Three

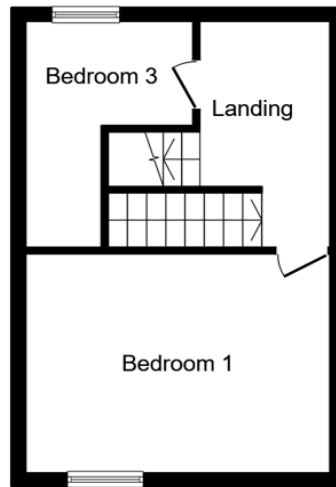


External





Ground Floor



First Floor



Second Floor

This floor plan is for illustrative purposes only. It is not drawn to scale. Any measurements, floor areas (including any total floor area), openings and orientations are approximate. No details are guaranteed, they cannot be relied upon for any purpose and do not form any part of any agreement. No liability is taken for any error, omission or misstatement. A party must rely upon its own inspection(s). Powered by www.Propertybox.io

Energy Efficiency Rating		Current	Potential
<i>Very energy efficient - lower running costs</i>			
(92-100) A			
(81-91) B			
(69-80) C			78
(55-68) D		60	
(39-54) E			
(21-38) F			
(1-20) G			
<i>Not energy efficient - higher running costs</i>			
England, Scotland & Wales		EU Directive 2002/91/EC	

Derwent Street, Hartlepool, Durham, TS26 8BE

Contact your local branch today for more information on this property:

20 Bishop Street, Stockton, Cleveland, TS18 1SY, Tel: 01642 210132, stockton@pattinson.co.uk, www.pattinson.co.uk

These particulars, whilst believed to be accurate are set out as a general outline only for guidance and do not constitute any part of an offer or contract. Intending purchasers should not rely on them as statements of representation of fact, but must satisfy themselves by inspection or otherwise as to their accuracy. No person in this firm's employment has the authority to make or give any representation or warranty in respect of the property.

