



### 3 bed town house to buy in NE27

Edgefield, West Allotment, Newcastle upon Tyne, Tyne and Wear, NE27 0BT

# £279,000

 x 3  x 2  x 2

Tenure

**Leasehold**

Driveway & Garage parking

Garden

### Property features

- ✓ Three Bedroom Semi Detached Town House
- ✓ Quiet Cul-De-Sac
- ✓ Sought After Area
- ✓ West Facing Rear Garden
- ✓ Garage and Gardens

## Key Information

- ✓ Council Tax: Band D
- ✓ Heating supply: Gas

## Arrange a viewing

Louise Tully  
Branch Manager  
Whitley Bay (Coastal Team)

0191 2531301  
whitley.bay@pattinson.co.uk

- ✓ Flexible viewing slots
- ✓ Accompanied viewings

## Description

Pattinson are delighted to welcome to the sales market this immaculate and well presented three bedroom townhouse situated within this popular residential area of Northumberland Park. The property has been maintained to a high specification and displays stylish design throughout, offering spacious living accommodation over three floors the property benefits from double glazing and gas central heating.

Comprising entrance hallway with downstairs wc, spacious fully fitted kitchen with dining area, large versatile conservatory with access to the rear garden, first floor landing there is a stylish living room with a Juliette balcony and the master bedroom with an en-suite, second floor landing there are two further double bedrooms family bathroom white suite. Externally the property offers a paved driveway leading up to a detached garage providing secure off street car parking and a front garden. To the rear there is a private west facing garden laid mainly to lawn with walled and fenced boundaries access to the garage. Early internal inspection is recommended to fully appreciate the quality of the accommodation on offer.

Council Tax Band: D

Tenure: Leasehold

Length of Lease: 102

Price: £279,000

Property Type: Town House

USPs: Garden

Parking: Driveway & Garage

Heating: Gas

## Hallway

Bright hallway with double glazed front door, radiator, downstairs wc



## Downstairs wc

White suite wash, hand basin, wc



## Kitchen

5.20m x 3.50m (17'0" x 11'5")

Fully fitted with a range of wall and floor units integrated oven, hob, extractor fan, double glazed window, plumbing for washing machine,



## Dining Area

Doors to the conservatory, vertical radiator.



## Conservatory

5.30m x 5.00m (17'4" x 16'4")

With log burner, radiator.



## First Floor Landing

With access to to the main bedroom and lounge, radiator



## Lounge

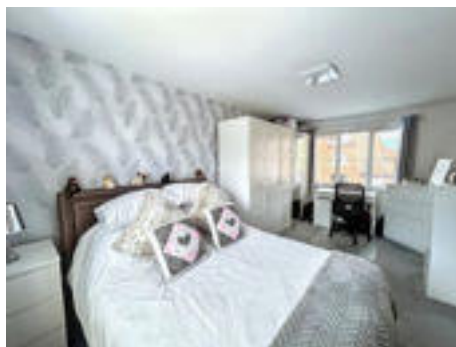
5.40m x 3.50m (17'8" x 11'5")

Bright and airy lounge featuring a Juliet balcony, allowing for an abundance of natural light and an attractive open outlook, double glazed window with dual aspect, radiator.



## Bedroom 1

Double to the front of the property with two double glazed windows providing dual aspect, radiator, en suite shower room.



## En Suite Shower Room

White suite, shower cubicle, wash hand basin, wc



## Second Floor Landing

Access to the bedrooms



## Bedroom 2

Double to the front of the property with two double glazed windows providing dual aspect, radiator.



## Bathroom

White suite, wash hand basin, wc, bath, velux window, part tiling.



## Bedroom 3

Double to the front of the property with two double glazed windows providing dual aspect, radiator.



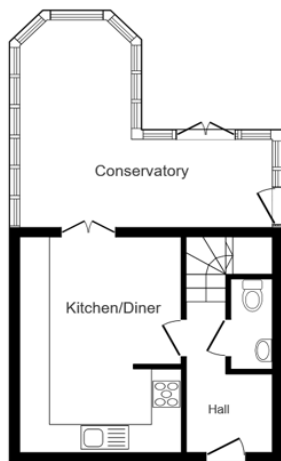
## Garden

Low maintenance garden with a Westerly facing aspect, incorporating a patio area, raised decking and artificial lawn, access to the garage.

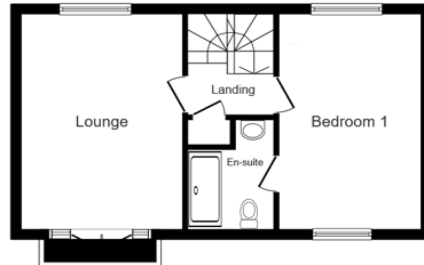


## Rear

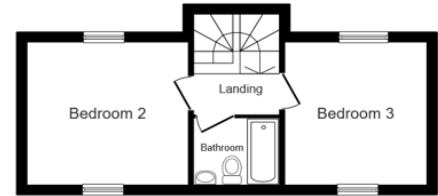




Ground Floor



First Floor



Second Floor

This floor plan is for illustrative purposes only. It is not drawn to scale. Any measurements, floor areas (including any total floor area), openings and orientations are approximate. No details are guaranteed, they cannot be relied upon for any purpose and do not form any part of any agreement. No liability is taken for any error, omission or misstatement. A party must rely upon its own inspection(s). Powered by [www.Propertybox.io](http://www.Propertybox.io)

Edgefield, West Allotment, Newcastle upon Tyne, Tyne and Wear, NE27 0BT

Contact your local branch today for more information on this property:

**189A Park View, Whitley Bay, North Tyneside, Tyne & Wear, NE26 3RD, Tel: 0191 2531301,  
whitley.bay@pattinson.co.uk, www.pattinson.co.uk**

These particulars, whilst believed to be accurate are set out as a general outline only for guidance and do not constitute any part of an offer or contract. Intending purchasers should not rely on them as statements of representation of fact, but must satisfy themselves by inspection or otherwise as to their accuracy. No person in this firm's employment has the authority to make or give any representation or warranty in respect of the property.

