



2 bed terraced house to buy in

Bank Street, Herne Bay, Kent, CT6 5AW

£185,000 Starting Bid

🏠 x2 🚗 x1 🚗 x2

Tenure

Freehold

On Street parking

Property features

- ✓ BEING SOLD VIA SECURE SALE ONLINE BIDDING - T&Cs APPLY
- ✓ Two Bed Terraced House
- ✓ Lovely Garden
- ✓ Open Plan Lounge
- ✓ EPC Rating D

Key Information

- ✓ Council Tax: Band C
- ✓ EPC Rating: D
- ✓ Heating supply: Gas
- ✓ Electric supply: National Grid
- ✓ Water supply: Direct mains water
- ✓ Broadband: FTTP (fibre to the premises)
- ✓ Mobile signal: Good

Arrange a viewing

Thomas Jack Smith
Branch Manager
South East Auction

01634 565510
southeast@pattinson.co.uk

- ✓ Flexible viewing slots
- ✓ Accompanied viewings

Description

Sold via Secure Sale online bidding. Terms & Conditions apply. Starting Bid £185,000.

This excellent two bed terraced freehold house occupies a popular & highly convenient location in the centre of Herne Bay giving quick & easy access to local amenities in the town, Herne Bay beach, and the raliway station.

Spacious, well proportioned and well presented this home comprises entrance hall; spacious reception room; modern kitchen with integrated appliances including cooker, hob & extractor; two well proportioned bedrooms; and a modern three piece family bathroom featuring a roll type bath; and utility space beyond.

Outside there in an attractive low maintenance garden with raised borders, a patio area and an artificial lawn.

Tenure: Freehold

Council tax band: C

EPC rating: 64

Council Tax Band: C

Tenure: Freehold

Price: Starting Bid £185,000

Property Type: Terraced House

Parking: On Street

Construction materials: Brick and block

Roofing type: Clay tiles

Risk of floods and or erosion: No

Flooded in last 5 years: No

Source of flood: Other

Flood defences: No

Planning permissions or proposals for development: No

Coalfield or mining area: No

Listed property: No

Conservation area: No

Public rights of way: No

Adaptions for accessibility: No

Restrictions: No

Required access: No

Heating: Gas

Electric: National Grid

Water: Direct mains water

Water meter: No

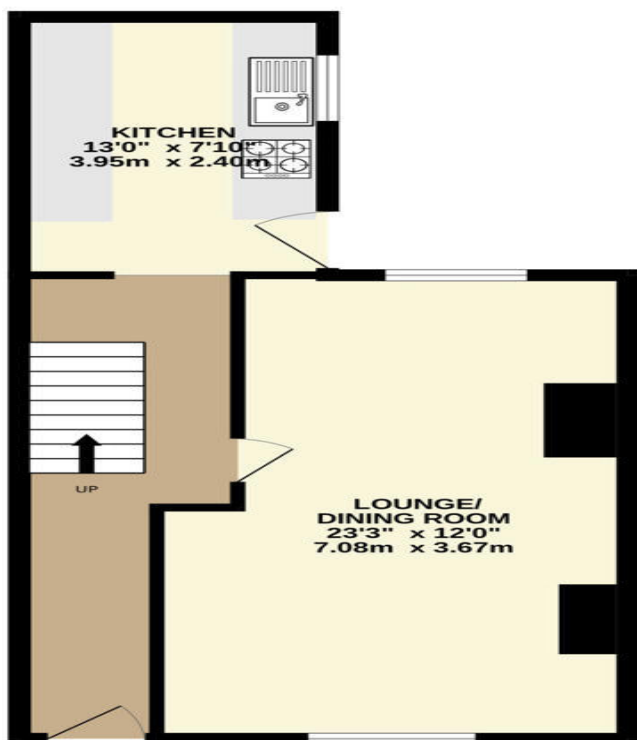
Sewerage: Standard UK domestic

Air conditioning: No

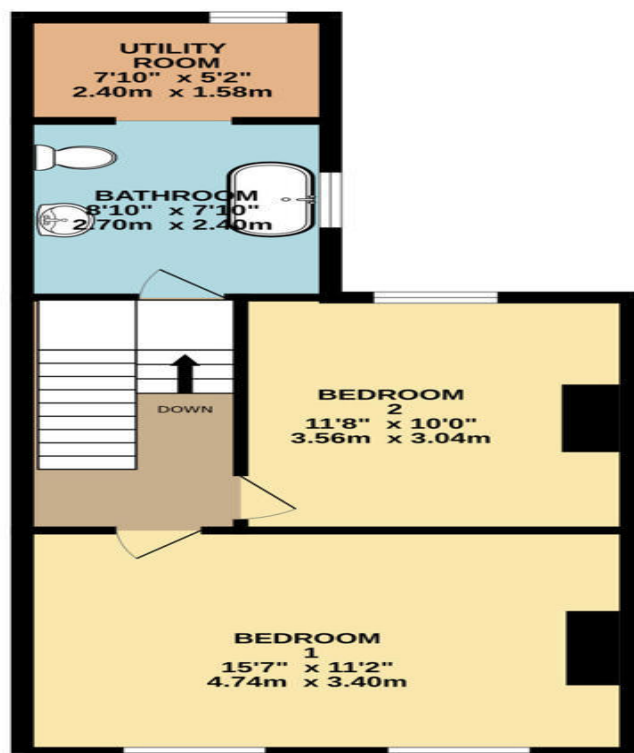
Broadband: FTTP (fibre to the premises)

Mobile signal coverage: Good

GROUND FLOOR
451 sq.ft. (41.9 sq.m.) approx.



1ST FLOOR
456 sq.ft. (42.3 sq.m.) approx.



TOTAL FLOOR AREA : 907 sq.ft. (84.3 sq.m.) approx.

Whilst every attempt has been made to ensure the accuracy of the floorplan contained here, measurements of doors, windows, rooms and any other items are approximate and no responsibility is taken for any error, omission or mis-statement. This plan is for illustrative purposes only and should be used as such by any prospective purchaser. The services, systems and appliances shown have not been tested and no guarantee as to their operability or efficiency can be given.
Made with Metropix ©2025

Energy Efficiency Rating		
	Current	Potential
<i>Very energy efficient - lower running costs</i>		
(92-100) A		
(81-91) B		85
(69-80) C		
(55-68) D	64	
(39-54) E		
(21-38) F		
(1-20) G		
<i>Not energy efficient - higher running costs</i>		
England, Scotland & Wales	EU Directive 2002/91/EC	

Bank Street, Herne Bay, Kent, CT6 5AW

Contact your local branch today for more information on this property:

Mercantile House Kingfisher Way , Silverlink Business Park, Wallsend, NE28 9NY, Tel: 01634 565510, southeast@pattinson.co.uk, www.pattinson.co.uk

These particulars, whilst believed to be accurate are set out as a general outline only for guidance and do not constitute any part of an offer or contract. Intending purchasers should not rely on them as statements of representation of fact, but must satisfy themselves by inspection or otherwise as to their accuracy. No person in this firms employment has the authority to make or give any representation or warranty in respect of the property.

