



3 bed detached house to buy in

Red Rose Close, Darlington, Durham, DL2 2FP

£225,000 Starting Bid

🏠 x 3 🚿 x 2 🚻 x 2

Tenure

Freehold

Off Street parking

Property features

- ✓ Principal bedroom with walk-in wardrobe and en-suite
- ✓ Converted garage providing versatile additional living space
- ✓ Extended detached family home
- ✓ Ground floor W.C and utility room
- ✓ EPC Rating C

Key Information

- ✓ Council Tax: Band E
- ✓ EPC Rating: C
- ✓ Heating supply: Gas

Arrange a viewing

Melanie Devine
Branch Manager
Stockton On Tees

01642 210132
stockton@pattinson.co.uk

- ✓ Flexible viewing slots
- ✓ Accompanied viewings

Description

TO BE SOLD VIA ONLINE AUCTION

Pattinson Estate Agents are delighted to present to the market this beautifully extended and well-appointed three-bedroom detached family home, occupying a pleasant position within the sought-after Red Rose Close, Darlington.

Offering generous and versatile accommodation throughout, this impressive home is ideally suited to modern family living. The ground floor briefly comprises a welcoming entrance hallway, a spacious living room, a separate dining/family room providing additional reception space, a well-equipped kitchen, a useful utility room, and a convenient ground floor W.C. The former garage has been thoughtfully converted to create a versatile additional room, ideal as a home office, playroom, snug or hobby room. To the first floor are three well-proportioned double bedrooms. The impressive principal bedroom benefits from a walk-in wardrobe and a contemporary en-suite shower room, while the remaining bedrooms are served by a modern family bathroom. Externally, the property enjoys off-street parking to the front and a fully enclosed rear garden, providing a safe and private outdoor space perfect for relaxing, entertaining and family life.

Situated within a popular residential development, the property is well placed for local amenities, highly regarded schools, parks and excellent transport links, with easy access to Darlington town centre and the A1(M).

Early viewing is highly recommended to fully appreciate the space, flexibility and quality of accommodation on offer.

Council Tax Band: E

Tenure: Freehold

Price: Starting Bid £225,000

Property Type: Detached House

Parking: Off Street

Heating: Gas

Entrance



Hallway

Lounge

6.27m x 3.97m (20'6" x 13'0")



W/C



Dining Room

3.13m x 3.03m (10'3" x 9'11")



Kitchen

4.02m x 3.03m (13'2" x 9'11")



Utility Room

1.81m x 1.77m (5'11" x 5'9")



Reception Room

5.60m x 2.63m (18'4" x 8'7")



Stairs to First Floor

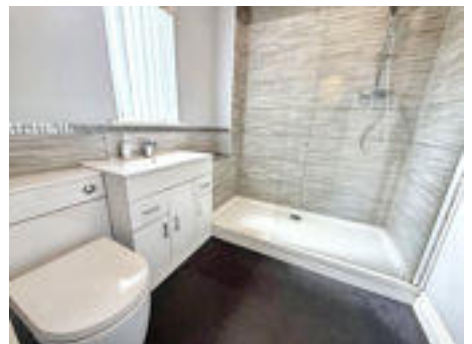
Bedroom One

4.23m x 4.07m (13'10" x 13'4")



Ensuite

2.11m x 1.95m (6'11" x 6'4")



Bedroom Two

3.78m x 3.09m (12'4" x 10'1")



Bedroom Three

3.76m x 3.11m (12'4" x 10'2")



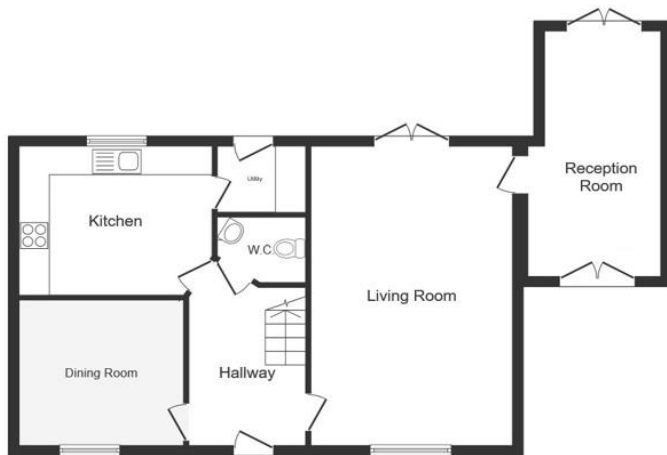
Bathroom W/C

2.31m x 1.84m (7'6" x 6'0")



External





Ground Floor



First Floor

Total floor area: 136.7 sq.m. (1,472 sq.ft.)

This floor plan is for illustrative purposes only. It is not drawn to scale. Any measurements, floor areas (including any total floor area), openings and orientations are approximate. No details are guaranteed, they cannot be relied upon for any purpose and do not form any part of any agreement. No liability is taken for any error, omission or misstatement. A party must rely upon its own inspection(s). Powered by www.Propertybox.io

Energy Efficiency Rating		
	Current	Potential
<i>Very energy efficient - lower running costs</i>		
(92-100) A		
(81-91) B		
(69-80) C	79	83
(55-68) D		
(39-54) E		
(21-38) F		
(1-20) G		
<i>Not energy efficient - higher running costs</i>		
England, Scotland & Wales	EU Directive 2002/91/EC	

Red Rose Close, Darlington, Durham, DL2 2FP

Contact your local branch today for more information on this property:

20 Bishop Street, Stockton, Cleveland, TS18 1SY, Tel: 01642 210132, stockton@pattinson.co.uk, www.pattinson.co.uk

These particulars, whilst believed to be accurate are set out as a general outline only for guidance and do not constitute any part of an offer or contract. Intending purchasers should not rely on them as statements of representation of fact, but must satisfy themselves by inspection or otherwise as to their accuracy. No person in this firm's employment has the authority to make or give any representation or warranty in respect of the property.

