



2 bed lodge to buy in NE46

Lowgate, Hexham, Northumberland, NE46 2NN

£175,000

🛏 x 2 🍷 x 2 🚗 x 1

Tenure

Leasehold

Allocated parking

Property features

- ✓ On-site Swimming Pool/Steam Room/Sauna/Gym
- ✓ Large Decking
- ✓ Open Plan Living
- ✓ En-Suite to Master Bedroom
- ✓ Two Bedroom Holiday Lodge

Key Information

- ✓ Council Tax: Band A
- ✓ Heating supply: Liquefied petroleum gas

Arrange a viewing

Lucy Sage
Branch Manager
Hexham

01434 605376
hexham@pattinson.co.uk

- ✓ Flexible viewing slots
- ✓ Accompanied viewings

Description

TWO BEDROOMS | PRIME LOCATION | DRIVEWAY FOR 3 CARS

Pattinson welcome to the market this two bedroom, holiday home, located on Heathergate Boutique Holiday Park, in Hexham.

The lodge comprises an open plan living room/kitchen/diner, two double bedrooms, with bedroom 1 benefitting from an en-suite bathroom and bedroom 2 with a walk in wardrobe, and the main family bathroom. Externally, there is a wrap around deck, featuring external lighting and there is a drive with space for 3 cars. The site benefits from a residents only on-site gym, exclusive swimming pool, steam room and sauna. There are also laundry facilities on-site available to use. The property benefits from LPG gas central heating and double glazing.

The park is situated within attractive grounds, which are well maintained. It sits just off Allendale Road, which is approximately 2 miles from the centre of Hexham. There is a bus stop just on the main road for getting to and from the town centre or Allendale and beyond. The town is well served with shops, leisure facilities, health centres and a hospital. The town is also ideally placed for a number of holiday attractions with the the coast, Hadrian's Wall, Northumberland National Park, a wide range of country walks for all abilities and cycle routes, a number of historic buildings and more. It lies just off the A69 main trunk road and has a mainline rail station and regular bus routes to all points between Carlisle and Newcastle.

Early viewing is recommended to appreciate all this property has to offer. Please contact Pattinson Hexham to arrange a viewing.

Council Tax Band: A

Tenure: Leasehold

Annual Service Charge Amount: £1,995.00

Service Charge Review Period: + VAT (fixed for 5 years)

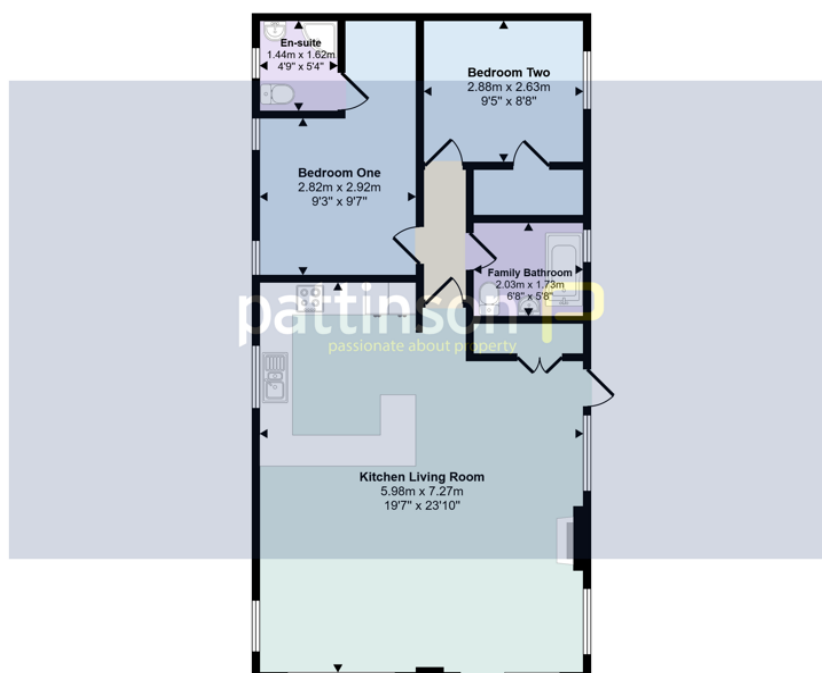
Price: £175,000

Property Type: Lodge

Parking: Allocated

Heating: Liquefied petroleum gas

Approx Gross Internal Area
72 sq m / 777 sq ft



Floorplan

This floorplan is only for illustrative purposes and is not to scale. Measurements of rooms, doors, windows, and any items are approximate and no responsibility is taken for any error, omission or mis-statement. Icons of items such as bathroom suites are representations only and may not look like the real items. Made with Made Snappy 360.

Lowgate, Hexham, Northumberland, NE46 2NN

Contact your local branch today for more information on this property:

**15 Priestpopple, Hexham, Northumberland, Tyne & Wear, NE46 1PH, Tel: 01434 605376,
hexham@pattinson.co.uk, www.pattinson.co.uk**

These particulars, whilst believed to be accurate are set out as a general outline only for guidance and do not constitute any part of an offer or contract. Intending purchasers should not rely on them as statements of representation of fact, but must satisfy themselves by inspection or otherwise as to their accuracy. No person in this firm's employment has the authority to make or give any representation or warranty in respect of the property.

