



## 2 bed terraced house to buy in

Akenshaw Drive, Seaton Delaval, Whitley Bay, Northumberland, NE25 0FN

# £131,333

 x2  x1  x1

Tenure

**Freehold**

Driveway parking

## Property features

- ✓ Beautifully presented home
- ✓ Ideal first home
- ✓ Affordable modern property
- ✓ Updated shower room
- ✓ Ground floor w/c.

## Key Information

- ✓ Council Tax: Band A
- ✓ Heating supply: Gas

## Arrange a viewing

Teri Dunning  
Cramlington

---

01670 568098  
cramlington@pattinson.co.uk

---

- ✓ Flexible viewing slots
- ✓ Accompanied viewings

## Description

Fantastic opportunity to purchase an affordable Section 106 home in a great position within Wheatridge Park, Seaton Delaval. This beautifully presented home has been updated to provide some fantastic features which include a modern shower room, landscaped garden and feature wall panelling.

Ideal for first time homeowners and looking for a home which is ready to move in!

The accommodation includes a entrance porch, living room with open staircase to the first floor and open plan kitchen/diner to the rear with french doors to the rear garden. The first floor includes two double bedrooms and a stunning shower room. Externally there is a practical drive to the front elevation and an enclosed garden to the rear, a super space for summer dining.

There is no onward purchase with this home and it is in ready to move into condition! Contact us to enquire about your eligibility to purchase a Section 106 home.

Council Tax Band: A

Tenure: Freehold

Price: £131,333

Property Type: Terraced House

Parking: Driveway

Heating: Gas

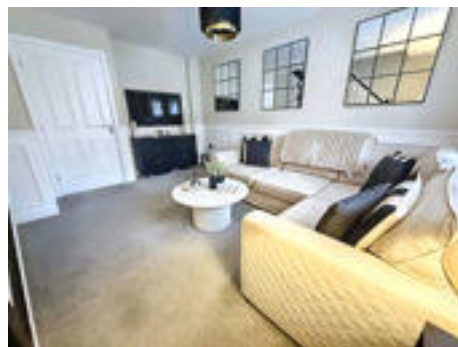
## Entrance porch



## Living Room



## Additional image

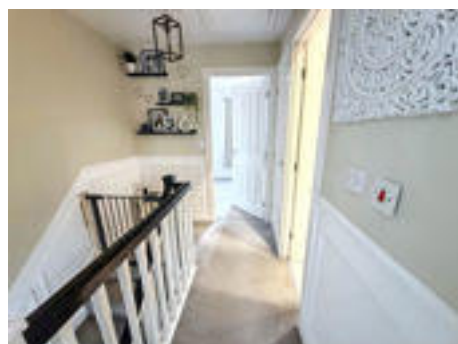


## W/C/Cloaks



## Kitchen/diner

## Landing



## Bedroom 1



## Bedroom 2



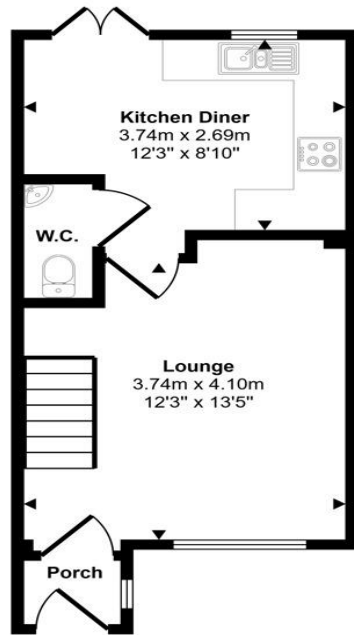
## Shower room



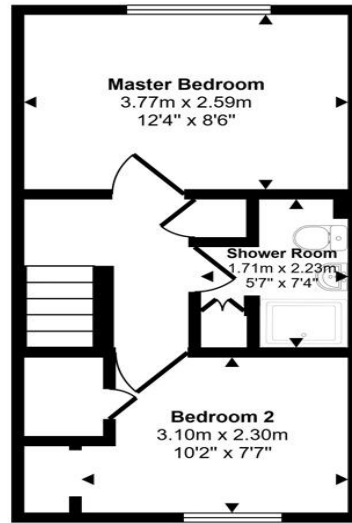
## External



Approx Gross Internal Area  
57 sq m / 613 sq ft



Ground Floor  
Approx 29 sq m / 313 sq ft



First Floor  
Approx 28 sq m / 301 sq ft

This floorplan is only for illustrative purposes and is not to scale. Measurements of rooms, doors, windows, and any items are approximate and no responsibility is taken for any error, omission or mis-statement. Icons of items such as bathroom suites are representations only and may not look like the real items. Made with Made Snappy 360.

Akenshaw Drive, Seaton Delaval, Whitley Bay, Northumberland, NE25 0FN

Contact your local branch today for more information on this property:

**Blagdon House Smithy Square, Cramlington, Northumberland, NE23 6QL, Tel: 01670 568098,  
cramlington@pattinson.co.uk, www.pattinson.co.uk**

These particulars, whilst believed to be accurate are set out as a general outline only for guidance and do not constitute any part of an offer or contract. Intending purchasers should not rely on them as statements of representation of fact, but must satisfy themselves by inspection or otherwise as to their accuracy. No person in this firm's employment has the authority to make or give any representation or warranty in respect of the property.

