



3 bed terraced house to buy in

Sherbrook Terrace, Daybrook,
Nottingham, Nottinghamshire, NG5 6BY

£120,000 Starting Bid

 x 3  x 2  x 2

Tenure

Freehold

On Street parking

Property features

- ✓ Being Sold via Secure Sale online bidding. Terms & Conditions apply
- ✓ Immediate 'exchange of contracts' available
- ✓ Three-bedroom end-terrace
- ✓ Potential to create a fourth
- ✓ Two reception rooms

Key Information

- ✓ Council Tax: Band B
- ✓ Heating supply: Gas
- ✓ Electric supply: National Grid
- ✓ Water supply: Direct mains water
- ✓ Broadband: Cable
- ✓ Mobile signal: Good

Arrange a viewing

Joe Nicholson
Branch Manager
Midlands Auction

0121 661 8465
midlands@pattinson.co.uk

- ✓ Flexible viewing slots
- ✓ Accompanied viewings

Description

For sale by Secure Sale Online Bidding. Terms and Conditions apply.

Positioned on Sherbrooke Terrace in the heart of Daybrook, this three-bedroom terrace property presents an excellent opportunity for investors, developers, or buyers looking to create a home tailored to their own style and requirements.

The property offers generous accommodation arranged over three levels (plus basement) and is now ready for modernisation, providing the perfect blank canvas for those seeking a project with plenty of potential.

The ground floor comprises two reception rooms, a kitchen, and a shower room. Below, the basement provides valuable additional storage space.

To the first floor are two well-proportioned double bedrooms, while the second floor offers a particularly versatile layout. Here, you'll find a spacious bedroom with an en-suite shower room, along with a separate living area featuring a small kitchenette. This floor could continue to be used as a self-contained living space or, subject to a buyer's requirements, could potentially be reconfigured to create a fourth bedroom.

Outside, the property benefits from a small enclosed yard to the rear.

Location-wise, the property is exceptionally well placed. Nottingham City Centre is within easy reach, excellent transport links are nearby, and a range of local amenities can be found just a short distance away, including a retail park, supermarkets, cafés, and a nearby Starbucks.

Whether you're looking for a buy-to-let investment, a renovation project, or an opportunity to add value, this property offers fantastic potential in a popular and convenient location.

Auctioneers Additional Comments

Pattinson Auction are working in Partnership with the marketing agent on this online auction sale and are referred to below as 'The Auctioneer'.

This auction lot is being sold either under conditional (Modern) or unconditional (Traditional) auction terms and overseen by the auctioneer in partnership with the marketing agent. The property is available to be viewed strictly by appointment only via the Marketing Agent or The Auctioneer. Bids can be made via the Marketing Agents or via The Auctioneers website.

Please be aware that any enquiry, bid or viewing of the subject property will require your details being shared between both any marketing agent and The Auctioneer in order that all matters can be dealt with effectively.

The property is being sold via a transparent online auction.

In order to submit a bid upon any property being marketed by The Auctioneer, all bidders/buyers will be required to adhere to a verification of identity process in accordance with Anti Money Laundering procedures. Bids can be submitted at any time and from anywhere.

Our verification process is in place to ensure that AML procedure are carried out in accordance with the law.

The advertised price is commonly referred to as a 'Starting Bid' or 'Guide Price' and is accompanied by a 'Reserve Price'. The 'Reserve Price' is confidential to the seller and the auctioneer and will typically be within a range above or below 10% of the 'Guide Price' / 'Starting Bid'.

These prices are subject to change.

An auction can be closed at any time with the auctioneer permitting for the property (the lot) to be sold prior to the end of the auction.

A Legal Pack associated with this particular property is available to view upon request and contains details relevant to the legal documentation enabling all interested parties to make an informed decision prior to bidding. The Legal Pack will also outline the buyers' obligations and sellers' commitments. It is strongly advised that you seek the counsel of a solicitor prior to proceeding with any property and/or Land Title purchase.
Auctioneers Additional Comments

In order to secure the property and ensure commitment from the seller, upon exchange of contracts the successful bidder will be expected to pay a non-refundable deposit equivalent to 5% of the purchase price of the property. The deposit will be a contribution to the purchase price. A non-refundable reservation fee up to 7.2% inc VAT (subject to a minimum which could be up to £7,200 inc VAT) is also required to be paid upon agreement of sale. The Reservation Fee is in addition to the agreed purchase price and consideration should be made by the purchaser in relation to any Stamp Duty Land Tax liability associated with overall purchase costs. Both the Marketing Agent and The Auctioneer may believe necessary or beneficial to the customer to pass their details to third party service suppliers, from which a referral fee may be obtained. There is no requirement or indeed obligation to use these recommended suppliers or services.

Council Tax Band: B

Tenure: Freehold

Price: Starting Bid £120,000

Property Type: Terraced House

Parking: On Street

Construction materials: Brick and block

Roofing type: Clay tiles

Risk of floods and or erosion: No

Flooded in last 5 years: No

Flood defences: No

Planning permissions or proposals for development: No

Coalfield or mining area: No

Listed property: No

Conservation area: No

Public rights of way: No

Adaptions for accessibility: No

Restrictions: No

Required access: No

Heating: Gas

Electric: National Grid

Water: Direct mains water

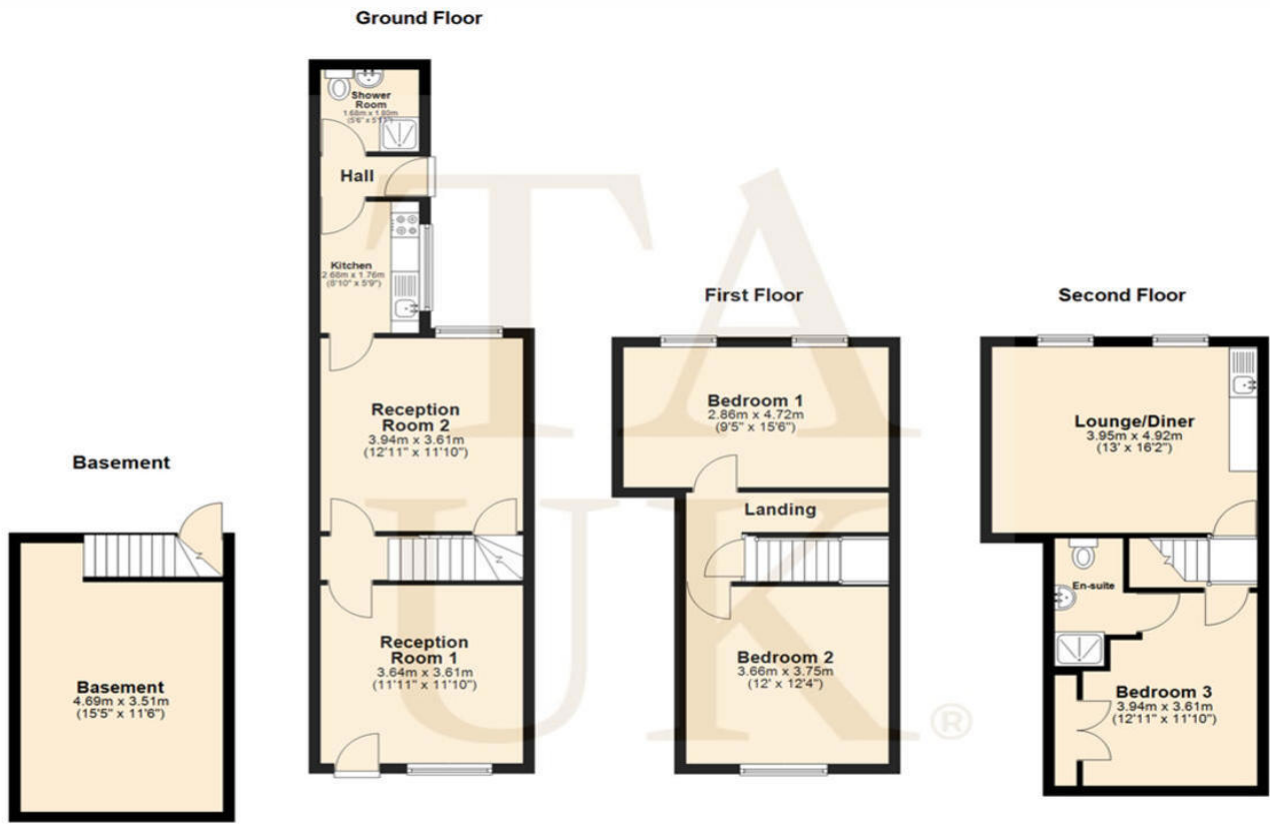
Water meter: No

Sewerage: Standard UK domestic

Air conditioning: No

Broadband: Cable

Mobile signal coverage: Good



Total area: approx. 133.0 sq. metres (1432.1 sq. feet)

This floor plan is provided for guidance and illustrative purposes only. It is not to scale, and all measurements are approximate. Perspectives buyers or tenants are advised to verify the details independently. Plan produced using PlanUp.

Sherbrook Terrace, Daybrook, Nottingham, Nottinghamshire, NG5 6BY

Contact your local branch today for more information on this property:

Mercantile House Silverlink, Wallsend, Tyne and Wear, NE28 9NY, Tel: 0121 661 8465, midlands@pattinson.co.uk, www.pattinson.co.uk

These particulars, whilst believed to be accurate are set out as a general outline only for guidance and do not constitute any part of an offer or contract. Intending purchasers should not rely on them as statements of representation of fact, but must satisfy themselves by inspection or otherwise as to their accuracy. No person in this firm's employment has the authority to make or give any representation or warranty in respect of the property.

