



3 bed semi-detached house to buy in CW1

Kettell Avenue, Crewe, Cheshire, CW1 3NJ

£110,000 Starting Bid

🏠 x3 🚗 x1 🚲 x1

Tenure
Freehold

Off Street parking

Property features

- ✓ Being Sold via Secure Sale online bidding. Terms and Conditions
- ✓ Investment Property
- ✓ Sold With Tenant In Situ
- ✓ £8400 Per Annum Rental Income
- ✓ EPC Rating D

Key Information

- ✓ Council Tax: Band A
- ✓ EPC Rating: D
- ✓ Heating supply: Gas
- ✓ Electric supply: National Grid
- ✓ Water supply: Direct mains water

Arrange a viewing

Abigail Hall
Branch Manager
North West Auction

0191 7371 168
northwest@pattinson.co.uk

- ✓ Flexible viewing slots
- ✓ Accompanied viewings

Description

Nestled in a sought-after neighbourhood, this charming semi-detached house offers a perfect blend of comfort and convenience.

Boasting a generous 1,082 sq ft of living space, the property features three well-appointed bedrooms, ideal investment property sold with tenant in situ and achieving £8400 per annum in rental income.

The spacious garden provides a tranquil retreat, perfect for relaxing or entertaining guests.

With the added benefits of off-street parking and a garage, convenience is at the forefront of this property.

This delightful home is situated in a prime location, close to local amenities, schools, and transport links, making it an ideal choice for those seeking a harmonious balance of comfort and practicality.

Don't miss the opportunity to make this property your new investment.

Council Tax Band: A

Tenure: Freehold

Price: Starting Bid £110,000

Property Type: Semi-detached house

Parking: Off Street

Risk of floods and or erosion: No

Flooded in last 5 years: No

Flood defences: No

Planning permissions or proposals for development: No

Listed property: No

Conservation area: No

Public rights of way: No

Adaptions for accessibility: No

Restrictions: No

Required access: No

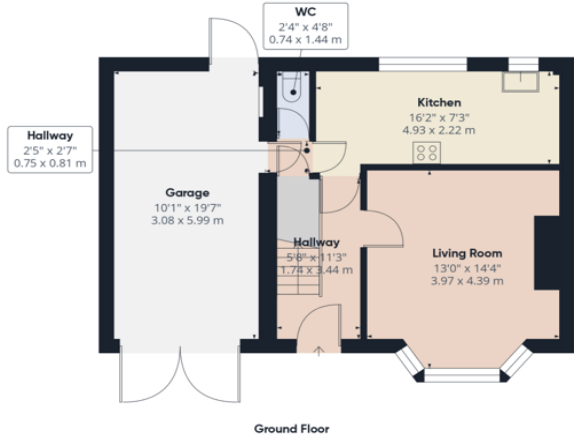
Heating: Gas

Electric: National Grid

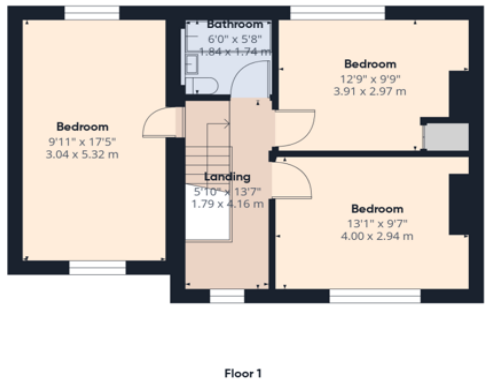
Water: Direct mains water

Sewerage: Standard UK domestic

Air conditioning: No



Approximate total area[®]
1082 ft²
100.6 m²



(1) Excluding balconies and terraces

Calculations reference the RICS IPMS 3C standard. Measurements are approximate and not to scale. This floor plan is intended for illustration only.

GIRAFFE360

Energy Efficiency Rating		
	Current	Potential
<i>Very energy efficient - lower running costs</i>		
(92-100) A		
(81-91) B		86
(69-80) C		
(55-68) D	60	
(39-54) E		
(21-38) F		
(1-20) G		
<i>Not energy efficient - higher running costs</i>		
England, Scotland & Wales		EU Directive 2002/91/EC

Kettell Avenue, Crewe, Cheshire, CW1 3NJ

Contact your local branch today for more information on this property:

Keith Pattinson Silverlink, Wallsend, Tyne and Wear, NE28 9NY, Tel: 0191 7371 168, northwest@pattinson.co.uk, www.pattinson.co.uk

These particulars, whilst believed to be accurate are set out as a general outline only for guidance and do not constitute any part of an offer or contract. Intending purchasers should not rely on them as statements of representation of fact, but must satisfy themselves by inspection or otherwise as to their accuracy. No person in this firms employment has the authority to make or give any representation or warranty in respect of the property.

