



### 3 bed semi-detached house to buy in NE29

Truro Grove, North Shields, North Shields, Tyne and Wear, NE29 8PJ

# £195,000

 x3  x1  x1

Tenure

**Freehold**

### Property features

 Three Bedroom Semi-Detached

On Street parking

## Key Information

- ✓ Council Tax: Band A
- ✓ Heating supply: Gas

## Arrange a viewing

Louise Tully  
Branch Manager  
Whitley Bay (Coastal Team)

0191 2531301  
whitley.bay@pattinson.co.uk

- ✓ Flexible viewing slots
- ✓ Accompanied viewings

## Description

Tucked away in a quiet cul-de-sac in a popular residential area of North Shields, this three-bedroom semi-detached home presents an excellent opportunity for buyers looking to settle in a well-connected and family-friendly location. The property offers generous living space and a layout that lends itself well to modern family life, with scope to add personal touches and make it your own over time.

The property opens into a welcoming entrance hall leading to a bright and spacious lounge, where natural light flows in through a large window, creating a warm and inviting atmosphere. The Kitchen is to the front of the property with a convenient utility off.

Upstairs, there are three well-proportioned bedrooms and a family bathroom with a separate WC. The overall layout is ideal for growing families, with plenty of space to accommodate day-to-day living and future improvements.

Outside, the rear garden offers a peaceful retreat, featuring a lawned area and patio space, .

Positioned close to local amenities, schools, and excellent transport links including the Coast Road, this home is ideally placed for those commuting into Newcastle or looking to enjoy the nearby coastline.

This is a home with great potential, offering comfort, space, and the chance to create something truly special. Early viewing is recommended to fully appreciate everything it has to offer.

Council Tax Band: A

Tenure: Freehold

Price: £195,000

Property Type: Semi-detached house

Parking: On Street

Heating: Gas

## Living Room



## Kitchen



## Bedroom 1



## Bedroom 2



## Bedroom 3



## Bathroom



---

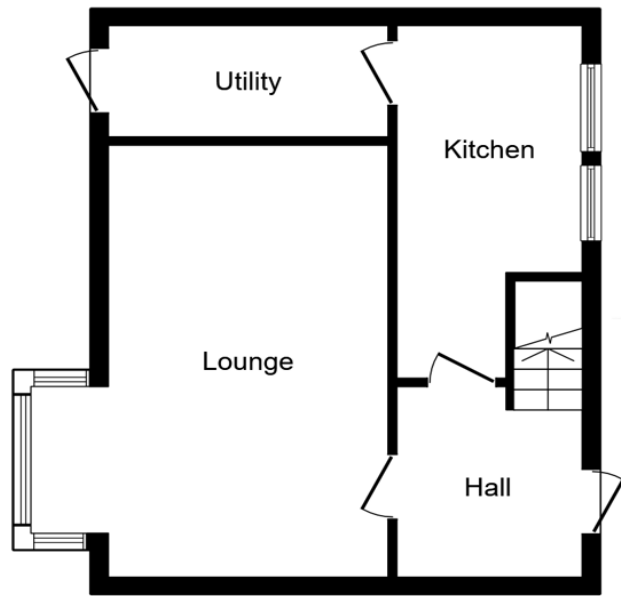
## Utility



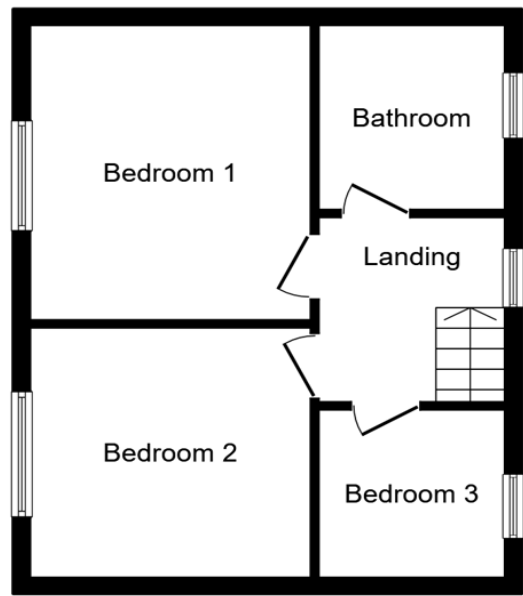
---

## External





Ground Floor



First Floor

This floor plan is for illustrative purposes only. It is not drawn to scale. Any measurements, floor areas (including any total floor area), openings and orientations are approximate. No details are guaranteed, they cannot be relied upon for any purpose and do not form any part of any agreement. No liability is taken for any error, omission or misstatement. A party must rely upon its own inspection(s). Powered by [www.Propertybox.io](http://www.Propertybox.io)

Truro Grove, North Shields, North Shields, Tyne and Wear, NE29 8PJ

Contact your local branch today for more information on this property:

**189A Park View, Whitley Bay, North Tyneside, Tyne & Wear, NE26 3RD, Tel: 0191 2531301,  
whitley.bay@pattinson.co.uk, www.pattinson.co.uk**

These particulars, whilst believed to be accurate are set out as a general outline only for guidance and do not constitute any part of an offer or contract. Intending purchasers should not rely on them as statements of representation of fact, but must satisfy themselves by inspection or otherwise as to their accuracy. No person in this firm's employment has the authority to make or give any representation or warranty in respect of the property.

