



4 bed detached house to buy in

Valley View, Fatfield, Washington, Tyne and Wear, NE38 8SL

£330,000 Offers Over

 x4  x3  x1

Tenure

Freehold

Property features

- ✓ Four Bedrooms
- ✓ Detached
- ✓ Driveway & Garage
- ✓ Sought After Location
- ✓ Close to Local Amenities

Driveway & Garage parking

Key Information

- ✓ Council Tax: Band D
- ✓ Heating supply: Gas

Arrange a viewing

Sam Tollett
Senior Manager
Washington

0191 4154467
washington@pattinson.co.uk

- ✓ Flexible viewing slots
- ✓ Accompanied viewings

Description

Rarely available on the highly sought-after Valley View in Washington, this impressive four-bedroom detached home offers generous living space, superb outdoor potential, and is ideal for growing families.

Upon entering, you are welcomed by a spacious entrance hall leading through to a bright and inviting living room, perfect for relaxing and entertaining. There is a separate dining room providing an ideal setting for family meals and gatherings, while the well-appointed kitchen offers ample storage and workspace. A convenient utility room and downstairs WC complete the ground floor accommodation.

To the first floor, the property boasts four well-proportioned bedrooms, including a spacious master bedroom benefitting from its own en suite shower room. A modern family bathroom serves the remaining bedrooms.

Externally, the property continues to impress with a driveway and garage providing off-street parking. To the rear, a substantial garden offers fantastic potential, with plenty of space for outdoor entertaining, landscaping, or future development (subject to the necessary permissions).

This is a rare opportunity to acquire a fantastic family home in a desirable location, early viewing is highly recommended.

Council Tax Band: D

Tenure: Freehold

Price: Offers Over £330,000

Property Type: Detached House

Parking: Driveway & Garage

Heating: Gas

External Front



Entrance Hall



Living Room



Dining Room



Kitchen



Utility Room



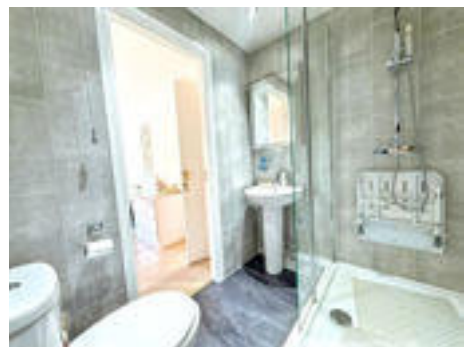
First Floor Landing



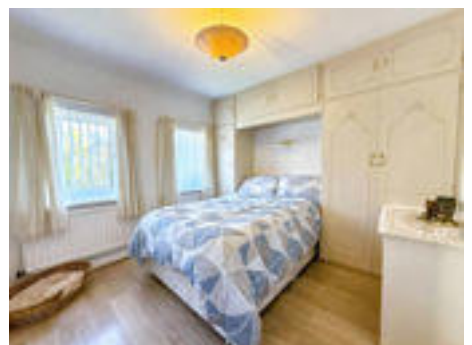
Bedroom 1



En-Suite



Bedroom 2



Bedroom 3



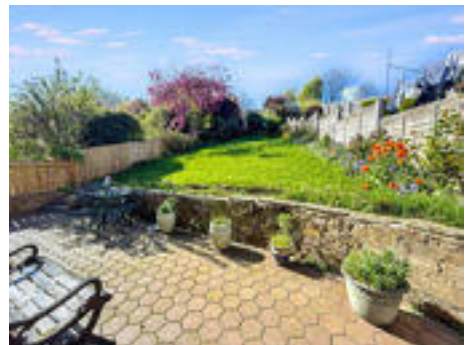
Bedroom 4



Bathroom



Rear Garden





Valley View, Fatfield, Washington, Tyne and Wear, NE38 8SL

Contact your local branch today for more information on this property:

55 The Galleries, Washington, Newcastle Upon Tyne, Tyne & Wear, NE38 7SA, Tel: 0191 4154467, Fax: 0191 4154313, washington@pattinson.co.uk, www.pattinson.co.uk

These particulars, whilst believed to be accurate are set out as a general outline only for guidance and do not constitute any part of an offer or contract. Intending purchasers should not rely on them as statements of representation of fact, but must satisfy themselves by inspection or otherwise as to their accuracy. No person in this firm's employment has the authority to make or give any representation or warranty in respect of the property.

