



### 3 bed semi-detached house to buy in TS17

Shetland Avenue, Thornaby,  
Stockton-on-Tees, Durham, TS17 8GB

# £150,000

 x3  x2  x1

Tenure

**Freehold**

### Property features

- ✓ Offered With No Forward Chain
- ✓ Front and Rear Gardens
- ✓ Driveway and Garage
- ✓ Popular Thornaby Location

Driveway & Garage parking

## Key Information

- ✓ Council Tax: Band B
- ✓ Heating supply: Gas

## Arrange a viewing

Melanie Devine  
Branch Manager  
Stockton On Tees

01642 210132  
stockton@pattinson.co.uk

- ✓ Flexible viewing slots
- ✓ Accompanied viewings

## Description

This modern three-bedroom semi-detached home is situated in the highly sought-after area of Thornaby, Stockton-on-Tees, offering convenient access to a range of local shops, well-regarded schools, and major transport links via the A66 and A19.

Stylishly presented throughout, the accommodation briefly comprises an entrance hall, ground floor W/C, contemporary kitchen, spacious lounge, three bedrooms including a master with en-suite, and a family bathroom. The property further benefits from gas central heating, double glazing, driveway and garage, as well as front and rear gardens.

To arrange an internal viewing or for further details, please contact our Stockton branch today.

Council Tax Band: B

Tenure: Freehold

Price: £150,000

Property Type: Semi-detached house

Parking: Driveway & Garage

Heating: Gas

## Entrance

---

## Hallway

---

## Kitchen

4.61m x 2.44m (15'1" x 8'0")



## Lounge

4.55m x 3.65m (14'11" x 11'11")



## W/C

---

## Stairs to First Floor

---

## Bedroom One

3.62m x 2.48m (11'10" x 8'1")



## Bedroom Two

4.04m x 2.44m (13'3" x 8'0")



## Bedroom Three



---

## Bathroom W/C

2.44m x 1.77m (8'0" x 5'9")

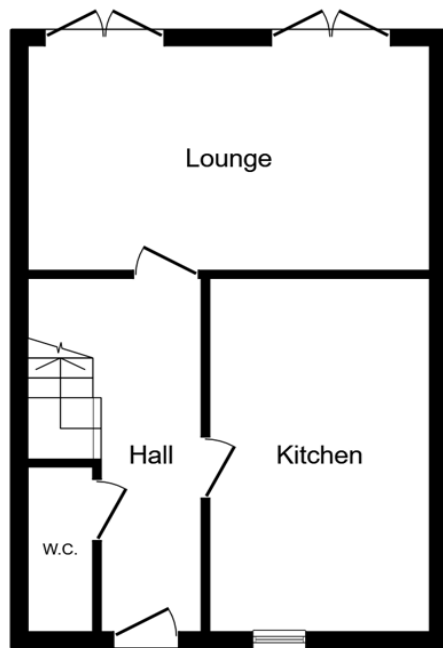


---

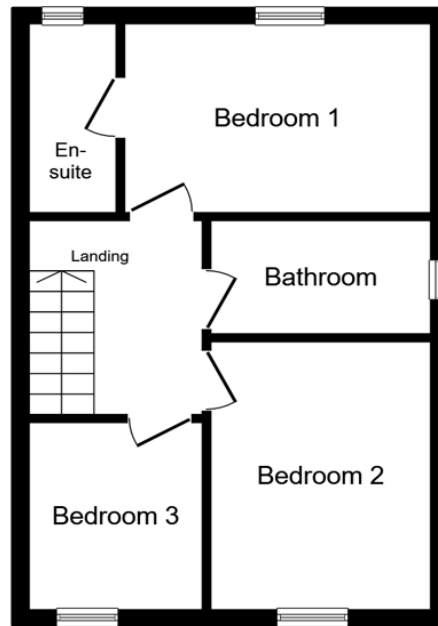
## External

Front and rear gardens, driveway and garage.





Ground Floor



First Floor

This floor plan is for illustrative purposes only. It is not drawn to scale. Any measurements, floor areas (including any total floor area), openings and orientations are approximate. No details are guaranteed, they cannot be relied upon for any purpose and do not form any part of any agreement. No liability is taken for any error, omission or misstatement. A party must rely upon its own inspection(s). Powered by [www.Propertybox.io](http://www.Propertybox.io)

Shetland Avenue, Thornaby, Stockton-on-Tees, Durham, TS17 8GB

Contact your local branch today for more information on this property:

**20 Bishop Street, Stockton, Cleveland, TS18 1SY, Tel: 01642 210132, [stockton@pattinson.co.uk](mailto:stockton@pattinson.co.uk), [www.pattinson.co.uk](http://www.pattinson.co.uk)**

These particulars, whilst believed to be accurate are set out as a general outline only for guidance and do not constitute any part of an offer or contract. Intending purchasers should not rely on them as statements of representation of fact, but must satisfy themselves by inspection or otherwise as to their accuracy. No person in this firm's employment has the authority to make or give any representation or warranty in respect of the property.

