



3 bed semi-detached house to buy in DH4

Woodland View, West Rainton, Houghton Le Spring, Durham, DH4 6RH

£117,500

 x3  x1  x1

Tenure

Freehold

Property features

- ✓ Semi Detached Family Home
- ✓ Three Bedrooms
- ✓ South/West Facing Garden
- ✓ Multi Car Driveway
- ✓ Popular Location

Driveway parking

Garden

Key Information

- ✓ Council Tax: Band A
- ✓ Heating supply: Gas

Arrange a viewing

Susan Davison
Branch Manager
Houghton

0191 5120933
houghton@pattinson.co.uk

- ✓ Flexible viewing slots
- ✓ Accompanied viewings

Description

****SEMI-DETACHED FAMILY HOME**THREE BEDROOMS**MULTI CAR DRIVEWAY**SOUTH/WEST FACING REAR GARDEN**POPULAR LOCATION****

Pattinson Estate Agents are delighted to welcome to the market this well presented three bed family home, which is situated in the sought after area of Woodland View, which is at the heart of West Rainton. Perfectly positioned within close proximity to local shops and other amenities, good public transport and great major road links via the A1(M). Also within walking distance to West Rainton Primary School, as well as being a short drive to Rainton Meadows Nature Reserve, Sunderland & Durham City Centres.

This impressive family residence is spacious throughout and briefly comprising of: Entrance/hallway, open plan lounge/dining room, a modern kitchen and a ground floor W.C. To the first floor there are three well proportioned bedrooms and a stylish three piece bathroom. Externally is a garden and a multi car driveway to the front and a South/West facing garden.

Early viewings come highly recommended to appreciate the location and standard of this property, please call our Houghton branch to arrange a viewing.

Council Tax Band: A

Tenure: Freehold

Price: £117,500

Property Type: Semi-detached house

USPs: Garden

Parking: Driveway

Heating: Gas

Entrance/Hallway



Lounge\Dining Room



Kitchen



Bedroom One



Bedroom Two



Bedroom Three

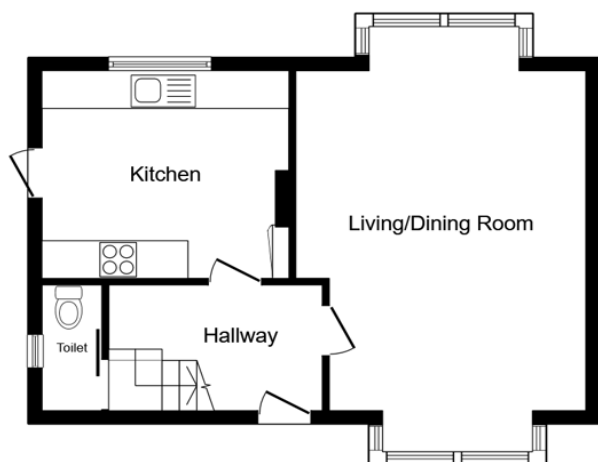


Bathroom

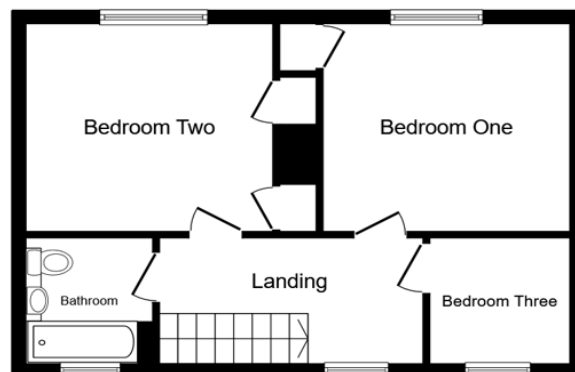


External





Ground Floor



First Floor

This floor plan is for illustrative purposes only. It is not drawn to scale. Any measurements, floor areas (including any total floor area), openings and orientations are approximate. No details are guaranteed, they cannot be relied upon for any purpose and do not form any part of any agreement. No liability is taken for any error, omission or misstatement. A party must rely upon its own inspection(s). Powered by www.Propertybox.io

Woodland View, West Rainton, Houghton Le Spring, Durham, DH4 6RH

Contact your local branch today for more information on this property:

**14a Newbottle Street, Houghton Le Spring, Tyne and Wear, Tyne & Wear, DH4 4AB, Tel: 0191 5120933,
houghton@pattinson.co.uk, www.pattinson.co.uk**

These particulars, whilst believed to be accurate are set out as a general outline only for guidance and do not constitute any part of an offer or contract. Intending purchasers should not rely on them as statements of representation of fact, but must satisfy themselves by inspection or otherwise as to their accuracy. No person in this firm's employment has the authority to make or give any representation or warranty in respect of the property.

