



3 bed semi-detached house to buy in TS5

Swainston Close, Acklam, Middlesbrough, North Yorkshire, TS5 8SF

£180,000

🏠 x3 🚗 x2 🚲 x1

Tenure

Freehold

Driveway parking

Property features

- ✓ Ideal purchase for first-time buyers, families and professionals
- ✓ Excellent access to the A19, A66 and Middlesbrough town centre
- ✓ Close to well-regarded schools, local amenities and leisure
- ✓ Master bedroom with en-suite shower room
- ✓ EPC Rating B

Key Information

- ✓ Council Tax: Band C
- ✓ EPC Rating: B
- ✓ Heating supply: Gas

Arrange a viewing

Melanie Devine
Branch Manager
Stockton On Tees

01642 210132
stockton@pattinson.co.uk

- ✓ Flexible viewing slots
- ✓ Accompanied viewings

Description

Pattinson Estate Agents are delighted to present to the market this beautifully presented three-bedroom semi-detached family home, situated on the popular Swainston Close in Acklam, Middlesbrough.

Offering modern accommodation throughout, the property is ideal for first-time buyers, growing families or those looking to upsize. The accommodation briefly comprises an entrance hallway, a convenient ground floor W.C., a comfortable lounge and a stylish kitchen/dining room with ample space for everyday family living and entertaining. To the first floor are three well-proportioned bedrooms, including a principal bedroom with its own en-suite shower room, together with a contemporary family bathroom. Externally, the property benefits from a driveway providing off-street parking to the front, while to the rear is a fully enclosed garden, offering a outdoor space ideal for relaxing, entertaining and family enjoyment.

Swainston Close is located within the highly desirable Trimdon area of Acklam, Middlesbrough, renowned for its excellent range of local amenities, well-regarded schools and convenient transport links. The property is within easy reach of a variety of shops, supermarkets, cafés and leisure facilities, while the nearby A19 and A66 provide excellent commuter access across Teesside and beyond. Nature lovers and families will also appreciate the proximity to local parks and green spaces, making this a superb location for a wide range of buyers.

Early viewing is highly recommended to fully appreciate the accommodation and location on offer.

Council Tax Band: C

Tenure: Freehold

Price: £180,000

Property Type: Semi-detached house

Parking: Driveway

Heating: Gas

Entrance



Lounge

4.30m x 2.80m (14'1" x 9'2")



Kitchen

4.66m x 2.91m (15'3" x 9'6")



W/C



Stairs to First Floor

Bedroom One

3.85m x 2.88m (12'7" x 9'5")



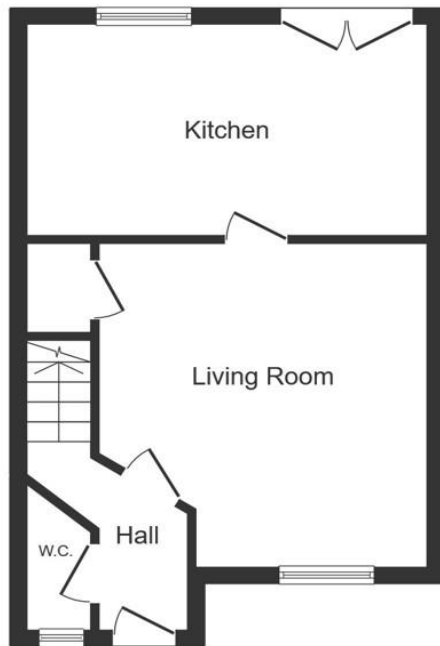
En-Suite



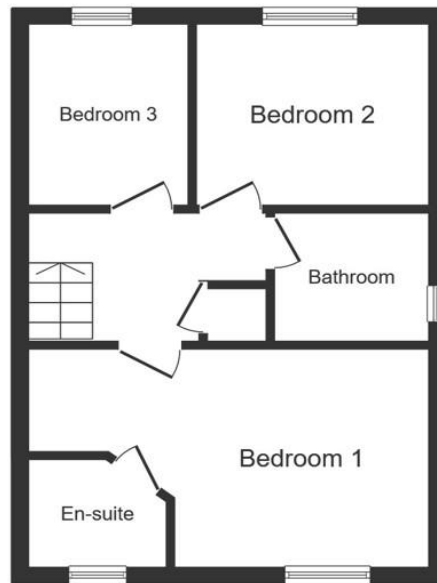
Bedroom Two

2.68m x 2.31m (8'9" x 7'6")





Ground Floor



First Floor

This floor plan is for illustrative purposes only. It is not drawn to scale. Any measurements, floor areas (including any total floor area), openings and orientations are approximate. No details are guaranteed, they cannot be relied upon for any purpose and do not form any part of any agreement. No liability is taken for any error, omission or misstatement. A party must rely upon its own inspection(s). Powered by www.Propertybox.io

Energy Efficiency Rating		
	Current	Potential
<i>Very energy efficient - lower running costs</i>		
(92-100) A		95
(81-91) B	83	
(69-80) C		
(55-68) D		
(39-54) E		
(21-38) F		
(1-20) G		
<i>Not energy efficient - higher running costs</i>		
England, Scotland & Wales	EU Directive 2002/91/EC	

Swainston Close, Acklam, Middlesbrough, North Yorkshire, TS5 8SF

Contact your local branch today for more information on this property:

20 Bishop Street, Stockton, Cleveland, TS18 1SY, Tel: 01642 210132, stockton@pattinson.co.uk, www.pattinson.co.uk

These particulars, whilst believed to be accurate are set out as a general outline only for guidance and do not constitute any part of an offer or contract. Intending purchasers should not rely on them as statements of representation of fact, but must satisfy themselves by inspection or otherwise as to their accuracy. No person in this firm's employment has the authority to make or give any representation or warranty in respect of the property.

