



5 bed semi-detached house to buy in TS7

Tebay Close, Ormesby, Middlesbrough, North Yorkshire, TS7 9JU

£130,000 Offers Over

 x 5  x 1  x 2

Tenure

Freehold

On Street parking

Property features

- ✓ Five Bedroom Semi-Detached
- ✓ Generous Family Accommodation
- ✓ Close to Schools & Amenities
- ✓ Popular Residential Location

Key Information

- ✓ Council Tax: Band B
- ✓ Heating supply: Gas

Arrange a viewing

Melanie Devine
Branch Manager
Stockton On Tees

01642 210132
stockton@pattinson.co.uk

- ✓ Flexible viewing slots
- ✓ Accompanied viewings

Description

Pattinson Estate Agents are delighted to welcome to the market this spacious five-bedroom semi-detached family home, situated on the popular residential cul-de-sac of Tebay Close, Ormesby, Middlesbrough. Offering generous and versatile accommodation throughout, the property is ideally suited to growing families and is conveniently positioned within easy reach of local shops, schools, public transport links and excellent road connections via the A19 and A174.

The accommodation briefly comprises an entrance leading into the hallway, a spacious lounge/dining area, a fitted kitchen and an additional reception room, providing flexible living space that could be used as a family room, playroom or home office. To the first floor are five well-proportioned bedrooms together with a family bathroom, offering ample accommodation for larger families or those requiring additional space to work from home.

Externally, the property enjoys a fully enclosed rear garden, providing a private outdoor space ideal for children, entertaining or relaxing. To the front, there is on-street parking available.

Early viewing is highly recommended to appreciate the size and flexibility of accommodation this excellent family home has to offer.

Council Tax Band: B

Tenure: Freehold

Price: Offers Over £130,000

Property Type: Semi-detached house

Parking: On Street

Heating: Gas

Entrance



Hallway

Lounge/Dining Area

6.52m x 3.52m (21'4" x 11'6")



Kitchen

3.73m x 3.00m (12'2" x 9'10")



Reception Room



Stairs to First Floor

Bedroom One

3.85m x 3.24m (12'7" x 10'7")



Bedroom Two

3.23m x 3.09m (10'7" x 10'1")



Bedroom Three

3.23m x 2.82m (10'7" x 9'3")



Bedroom Four

3.26m x 3.13m (10'8" x 10'3")



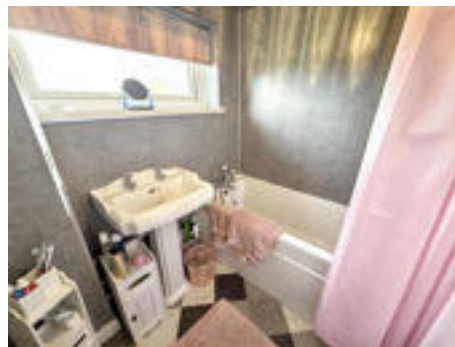
Bedroom Five

2.41m x 2.37m (7'10" x 7'9")



Bathroom W/C

1.84m x 1.64m (6'0" x 5'4")



W/C



External





Tebay Close, Ormesby, Middlesbrough, North Yorkshire, TS7 9JU

Contact your local branch today for more information on this property:

**20 Bishop Street, Stockton, Cleveland, TS18 1SY, Tel: 01642 210132, stockton@pattinson.co.uk,
www.pattinson.co.uk**

These particulars, whilst believed to be accurate are set out as a general outline only for guidance and do not constitute any part of an offer or contract. Intending purchasers should not rely on them as statements of representation of fact, but must satisfy themselves by inspection or otherwise as to their accuracy. No person in this firm's employment has the authority to make or give any representation or warranty in respect of the property.

