



3 bed upper flat to buy in NE28

Stanley Street, Wallsend, Tyne and Wear,
NE28 7DB

£49,000 Starting Bid

🛏 x3 🚿 x1 🚻 x1

Tenure

Leasehold

On Street parking

Property features

- ✓ To Be Sold Via Online Auction
- ✓ Three Bedrooms
- ✓ Full Loft Conversion
- ✓ Close to Local Amenities
- ✓ EPC - TBC

Key Information

- ✓ Council Tax: Band A
- ✓ Heating supply: Gas

Arrange a viewing

Alia Saidan
Branch Manager
Wallsend

0191 2345681
wallsend@pattinson.co.uk

- ✓ Flexible viewing slots
- ✓ Accompanied viewings

Description

To Be Sold Via Online Auction, Fees Apply.

Rare Opportunity – Spacious Three Bedroom Upper Flat in a Prime Wallsend Location

Situated on the highly sought-after Stanley Street, Wallsend, this is a rare opportunity to acquire a generously proportioned three-bedroom upper flat, ideally positioned just moments from Wallsend High Street with its excellent range of local amenities, shops, cafés and superb transport links.

The accommodation is accessed via a private entrance hall with stairs leading to the first-floor landing. The property boasts a bright and spacious living room, a well-appointed kitchen, a family bathroom and two generously sized bedrooms. An additional room provides access via staircase to an impressive third bedroom, creating a versatile layout perfect for growing families, professionals or those requiring extra workspace.

Externally, the property benefits from a shared rear yard, providing useful outdoor space.

Further enhancing the appeal, the property has been well maintained with the addition of a new boiler, new flat roof and new guttering, offering buyers added peace of mind and reducing future maintenance costs.

Combining spacious accommodation, significant recent improvements and an exceptionally convenient location, this fantastic home presents an excellent opportunity for first-time buyers, families and investors alike. Early viewing is highly recommended to fully appreciate everything this unique property has to offer.

Council Tax Band: A

Tenure: Leasehold

Length of Lease: 959

Price: Starting Bid £49,000

Property Type: Upper Flat

Parking: On Street

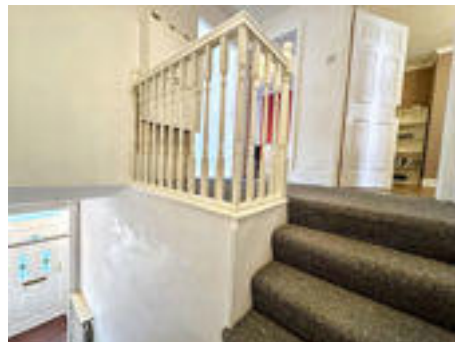
Heating: Gas

External Front



Entrance Hall

2.726m x 2.47m (8'11" x 8'1")



Living Room

4.517m x 4.061m (14'9" x 13'3")



Kitchen

3.318m x 2.308m (10'10" x 7'6")



Bedroom 1

4.336m x 3.919m (14'2" x 12'10")



Bedroom 2

3.025m x 2.701m (9'11" x 8'10")



Landing to Upstairs

3.256m x 2.751m (10'8" x 9'0")



Bedroom 3

6.193m x 5.518m (20'3" x 18'1")



Bathroom

2.273m x 1.768m (7'5" x 5'9")



Rear Yard





Stanley Street, Wallsend, Tyne and Wear, NE28 7DB

Contact your local branch today for more information on this property:

**157 High Street East, Wallsend, Newcastle Upon Tyne, Tyne & Wear, NE28 7RL, Tel: 0191 2345681,
wallsend@pattinson.co.uk, www.pattinson.co.uk**

These particulars, whilst believed to be accurate are set out as a general outline only for guidance and do not constitute any part of an offer or contract. Intending purchasers should not rely on them as statements of representation of fact, but must satisfy themselves by inspection or otherwise as to their accuracy. No person in this firm's employment has the authority to make or give any representation or warranty in respect of the property.

