



2 bed semi-detached bungalow to buy in TS20

Measham Close, Norton,
Stockton-on-Tees, Durham, TS20 1RS

£225,000

 x 2  x 1  x 1

Tenure

Freehold

Driveway parking

Property features

- ✓ POPULAR LOCATION
- ✓ WELL PRESENTED THROUGHOUT
- ✓ SPACIOUS LOUNGE
- ✓ TWO DOUBLE BEDROOMS
- ✓ MODERN KITCHEN

Key Information

- ✓ Council Tax: Band B
- ✓ Heating supply: Gas

Arrange a viewing

Charlotte Kitching
Branch Manager
Norton

01642 363345
norton@pattinson.co.uk

- ✓ Flexible viewing slots
- ✓ Accompanied viewings

Description

Situated within a pleasant cul-de-sac on the ever-popular Glebe development, this impressive semi-detached bungalow offers beautifully presented, turnkey accommodation that is ready to move straight into.

Occupying a convenient position close to local amenities, the property is approached via an attractive imprinted concrete driveway alongside a low-maintenance gravelled frontage. Entering from the side elevation, a welcoming entrance hall provides access to the boarded loft and leads through to the well-proportioned accommodation.

The spacious lounge is filled with natural light courtesy of a bow window to the front elevation and is centred around a feature fireplace incorporating an electric cast-effect stove, creating a warm and inviting focal point.

To the rear, the stylish fitted kitchen has been thoughtfully designed with a range of contemporary cabinetry, complementary work surfaces and modern tiled splashbacks. Open-plan to the extension, this superb additional space provides a versatile dining area or garden room, with French doors opening directly onto the rear garden, making it ideal for both everyday living and entertaining.

Both bedrooms are generously sized, while the contemporary shower room has been finished to a high standard with modern fittings and a sleek design.

Externally, the rear garden has been designed for ease of maintenance and enjoys a combination of patio, gravel, decking and artificial lawn, offering a variety of seating and entertaining areas. A substantial outbuilding provides excellent external storage or workshop potential.

Beautifully maintained throughout, this fantastic bungalow is certain to appeal to a wide range of buyers seeking a home that can be enjoyed from day one.

Early viewing is highly recommended. Contact Pattinson's Norton team today to arrange your appointment.

Council Tax Band: B

Tenure: Freehold

Price: £225,000

Property Type: Semi-detached Bungalow

Parking: Driveway

Listed property: No

Conservation area: No

Heating: Gas

Water meter: No

Accommodation

4.55m x 3.32m (14'11" x 10'10")



Kitchen

2.76m x 2.74m (9'0" x 8'11")



Dining Room

2.86m x 2.58m (9'4" x 8'5")



Bedroom 1

3.92m x 3.32m (12'10" x 10'10")



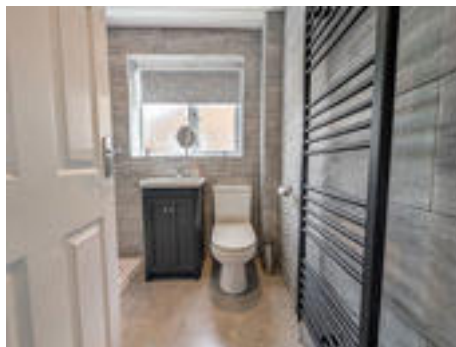
Bedroom 2

2.80m x 2.72m (9'2" x 8'11")



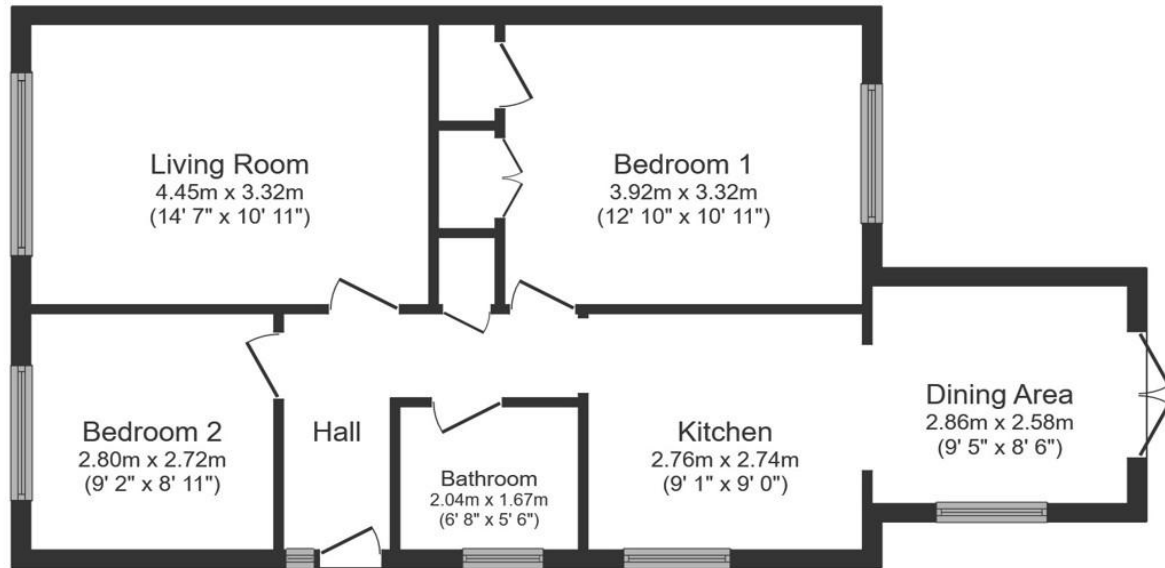
Bathroom

2.04m x 1.67m (6'8" x 5'5")



Rear Garden





Floor Plan

Total floor area: 65.4 sq.m. (704 sq.ft.)

This floor plan is for illustrative purposes only. It is not drawn to scale. Any measurements, floor areas (including any total floor area), openings and orientations are approximate. No details are guaranteed, they cannot be relied upon for any purpose and do not form any part of any agreement. No liability is taken for any error, omission or misstatement. A party must rely upon its own inspection(s). Powered by www.Propertybox.io

Measham Close, Norton, Stockton-on-Tees, Durham, TS20 1RS

Contact your local branch today for more information on this property:

**4a High Street, Norton, Stockton-on-Tees, Durham, TS20 1DN, Tel: 01642 363345,
norton@pattinson.co.uk, www.pattinson.co.uk**

These particulars, whilst believed to be accurate are set out as a general outline only for guidance and do not constitute any part of an offer or contract. Intending purchasers should not rely on them as statements of representation of fact, but must satisfy themselves by inspection or otherwise as to their accuracy. No person in this firm's employment has the authority to make or give any representation or warranty in respect of the property.

