



2 bed upper flat to buy in NE29

Verne Road, North Shields, Tyne and Wear, NE29 7DJ

£120,000

 x2  x1  x1

Tenure

Leasehold

Property features

 EPC Rating D

Garage parking

Garden

Key Information

- ✓ Council Tax: Band A
- ✓ EPC Rating: D
- ✓ Heating supply: Gas

Arrange a viewing

Louise Tully
Branch Manager
Whitley Bay (Coastal Team)

0191 2531301
whitley.bay@pattinson.co.uk

- ✓ Flexible viewing slots
- ✓ Accompanied viewings

Description

Situated in a popular residential location, this well-presented two-bedroom upper semi-detached flat offers an excellent opportunity for first-time buyers, downsizers, or investors alike.

The accommodation provides well-proportioned living space throughout, comprising a bright and spacious lounge, a fitted kitchen, two comfortable bedrooms, and a family bathroom. Externally, the property further benefits from a detached garage, providing valuable storage or secure off-street parking.

Conveniently located close to a range of local amenities, schools, and transport links, this attractive home combines practicality with a sought-after setting. Early viewing is highly recommended to fully appreciate all that this property has to offer.

Council Tax Band: A

Tenure: Leasehold

Length of Lease: 962

Price: £120,000

Property Type: Upper Flat

USPs: Garden

Parking: Garage

Heating: Gas

Lounge



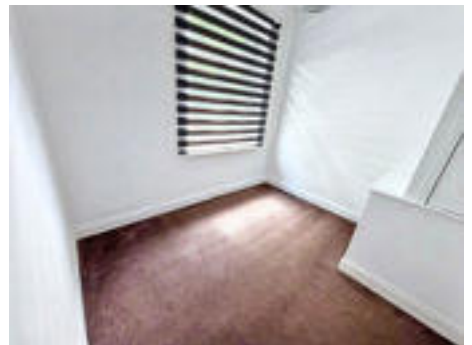
Kitchen



Main bedroom



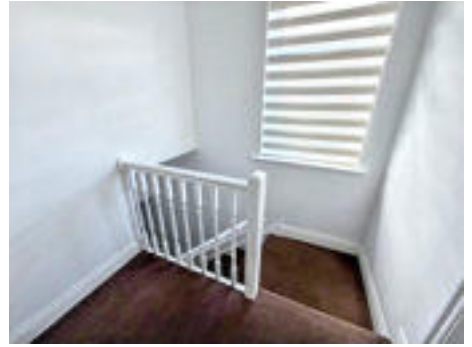
Bedroom Two



Bathroom




Landing



Garage





Energy Efficiency Rating		
	Current	Potential
<i>Very energy efficient - lower running costs</i>		
(92-100) A		
(81-91) B		
(69-80) C		
(55-68) D	59	64
(39-54) E		
(21-38) F		
(1-20) G		
<i>Not energy efficient - higher running costs</i>		
England, Scotland & Wales		EU Directive 2002/91/EC 

Verne Road, North Shields, Tyne and Wear, NE29 7DJ

Contact your local branch today for more information on this property:

189A Park View, Whitley Bay, North Tyneside, Tyne & Wear, NE26 3RD, Tel: 0191 2531301, whitley.bay@pattinson.co.uk, www.pattinson.co.uk

These particulars, whilst believed to be accurate are set out as a general outline only for guidance and do not constitute any part of an offer or contract. Intending purchasers should not rely on them as statements of representation of fact, but must satisfy themselves by inspection or otherwise as to their accuracy. No person in this firm's employment has the authority to make or give any representation or warranty in respect of the property.

