



To buy

### 3 bed terraced house to buy in

Meldon Terrace, Heaton, Newcastle upon Tyne, Tyne and Wear, NE6 5XQ

# £250,000

 x 3  x 1  x 2

Tenure

**Freehold**

On Street parking

### Property features

- ✓ Three bedrooms
- ✓ Gas central heating
- ✓ UPVC windows
- ✓ Popular location
- ✓ Chain free

## Key Information

- ✓ Council Tax: Band B
- ✓ Heating supply: Gas
- ✓ Electric supply: National Grid
- ✓ Water supply: Direct mains water
- ✓ Broadband: ADSL copper wire
- ✓ Mobile signal: Good

## Arrange a viewing

Hayley McCormack  
Sales Negotiator  
Heaton

0191 2049601  
heaton@pattinson.co.uk

- ✓ Flexible viewing slots
- ✓ Accompanied viewings

## Description

In need of renovation is this three-bedroom terrace property located in the heart of Heaton, a popular area with a strong sense of community.

The accommodation comprises; entrance hall with stairs to the first floor, lounge to the front with walk in bay window, dining room, kitchen with a range of wall and base units, complimenting work surfaces, stainless steel sink with mixer tap, tiled splashback, space for appliances, UPVC double glazed door leading to the rear yard, UPVC double glazed window and radiator. To the first floor there are three bedrooms and a bathroom/WC.

Externally, the property benefits from a front town garden and a rear yard that provides access to a rear lane. The property is ideally located close to all local amenities, good schools, Chillingham Road Metro Station and good transport links to Newcastle City Centre, the Coast and South Tyneside.

Virtual tour link

<https://tours.pattinson.co.uk/tour/1ga1g2e4a7>

To arrange a viewing please call our Heaton office.

Council Tax Band: B

Tenure: Freehold

Price: £250,000

Property Type: Terraced House

Parking: On Street

Construction materials: Brick and block

Roofing type: Slate tiles

Risk of floods and or erosion: No

Flooded in last 5 years: No

Flood defences: No

Planning permissions or proposals for development: No

Coalfield or mining area: No

Listed property: No

Conservation area: No

Public rights of way: No

Adaptions for accessibility: No

Restrictions: No

Required access: No

Heating: Gas

Electric: National Grid

Water: Direct mains water

Water meter: No

Sewerage: Standard UK domestic

Air conditioning: No

Broadband: ADSL copper wire, Cable, FTTC (fibre to the cabinet), FTTP (fibre to the premises)

Mobile signal coverage: Good

## Front External



## Entrance Hall

With doors to lounge, dining room and kitchen. Double radiator.

## Lounge

4.01m x 3.88m (13'1" x 12'8")

UPVC double glazed bay window to the front and double radiator.



## Dining Room

3.27m x 3.55m (10'8" x 11'7")

UPVC double glazed window to the rear and double radiator.



## Kitchen

3.05m x 2.71m (10'0" x 8'10")

UPVC double glazed window and door to the rear yard, base and wall units, tiled splashback, stainless steel sink with mixer tap and double radiator.



## First Floor Landing

With doors to bathroom and bedrooms.

## Bathroom

3.12m x 2.02m (10'2" x 6'7")

White three piece bathroom suite comprising; bath with shower over and glass screen, hand wash basin, low level WC, tiled walls, UPVC double glazed window and radiator.



## Bedroom One

3.25m x 3.82m (10'7" x 12'6")

UPVC double glazed window to the rear and single radiator



## Bedroom Two

3.94m x 2.95m (12'11" x 9'8")

UPVC double glazed window to the front and radiator.



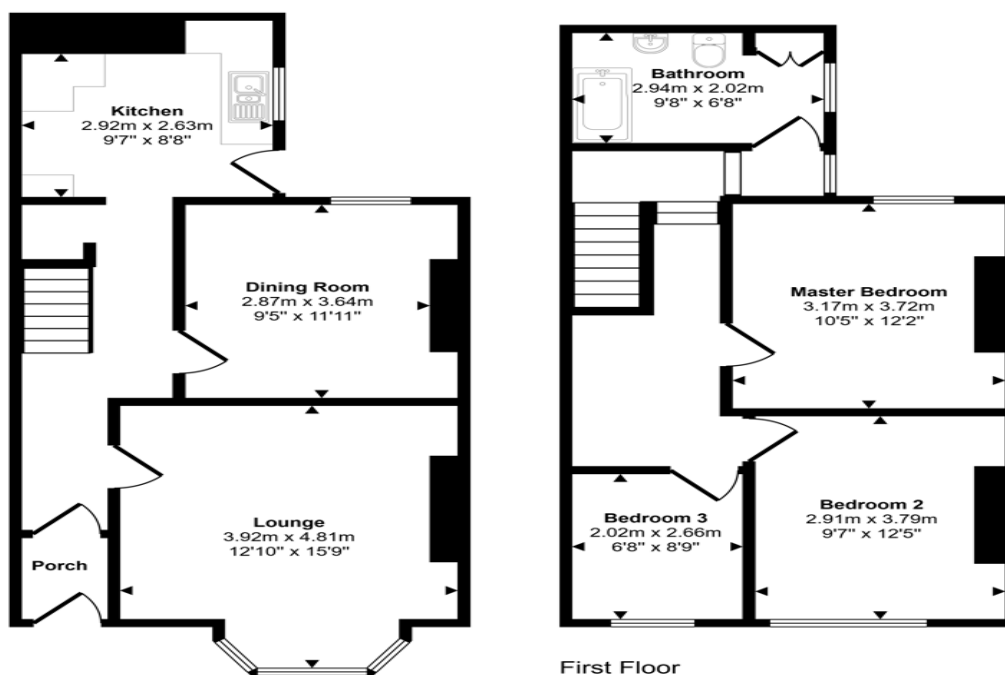
## Bedroom Three

2.10m x 2.79m (6'10" x 9'1")

UPVC double glazed window to the front and radiator.



Approx Gross Internal Area  
98 sq m / 1051 sq ft



Ground Floor  
Approx 50 sq m / 537 sq ft

First Floor  
Approx 48 sq m / 514 sq ft

This floorplan is only for illustrative purposes and is not to scale. Measurements of rooms, doors, windows, and any items are approximate and no responsibility is taken for any error, omission or mis-statement. Icons of items such as bathroom suites are representations only and may not look like the real items. Made with Made Snappy 360.

Meldon Terrace, Heaton, Newcastle upon Tyne, Tyne and Wear, NE6 5XQ

Contact your local branch today for more information on this property:

**224 Chillingham Road, Heaton, Newcastle Upon Tyne, Tyne & Wear, NE6 5LP, Tel: 0191 2049601,  
heaton@pattinson.co.uk, www.pattinson.co.uk**

These particulars, whilst believed to be accurate are set out as a general outline only for guidance and do not constitute any part of an offer or contract. Intending purchasers should not rely on them as statements of representation of fact, but must satisfy themselves by inspection or otherwise as to their accuracy. No person in this firm's employment has the authority to make or give any representation or warranty in respect of the property.

