



2 bed semi-detached house to buy in NE24

Hodgsons Road, Blyth , Blyth,
Northumberland, NE24 1PN

£80,000

 x2  x1  x1

Tenure

Freehold

Property features

- ✓ Semi Detached
- ✓ Two Double Bedrooms
- ✓ Gardens Front And Rear
- ✓ Driveway
- ✓ Close to Local Amenities.

Driveway parking

Garden

Key Information

- ✓ Council Tax: Band A
- ✓ Heating supply: Gas
- ✓ Electric supply: National Grid
- ✓ Water supply: Direct mains water
- ✓ Broadband: ADSL copper wire
- ✓ Mobile signal: Good

Arrange a viewing

Linda Ritchie
Senior Manager
Blyth

01670 369000
blyth@pattinson.co.uk

- ✓ Flexible viewing slots
- ✓ Accompanied viewings

Description

We are delighted to present this semi-detached house located in the heart of Blyth. This cosy home is perfect for a small family or first-time buyers.

The property boasts two well-proportioned bedrooms, decorated to a neutral palette to allow potential buyers to personalise to their own tastes. Further, the property contains one family bathroom.

The main reception room is fitted with a large windows that allows natural light to flood in, creating a bright and inviting atmosphere. This spacious area provides an ideal spot for family gatherings and relaxation alike.

The kitchen is designed with functionality in mind, sporting ample storage space and essential appliances. Ready and waiting for the culinary explorer to serve up family meals or enjoy the morning cuppa.

The front aspect of the property offers a large garden area, perfect for the green-fingered lover and presents a pleasant welcome to any visitor. Meanwhile, at the rear, you can enjoy the privacy of your own outdoor sanctuary, perfect for summer BBQs or relaxing with a good book.

Overall, this two-bedroom, semi-detached house in Blyth, is a fantastic opportunity to either make your first step onto the property ladder or to add a lucrative property to your investment portfolio. Please contact us at Pattinson Estate Agents for more information and to schedule a viewing.

Council Tax Band: A

Tenure: Freehold

Price: £80,000

Property Type: Semi-detached house

USPs: Garden

Parking: Driveway

Listed property: No

Conservation area: No

Heating: Gas

Electric: National Grid

Water: Direct mains water

Water meter: No

Sewerage: Standard UK domestic

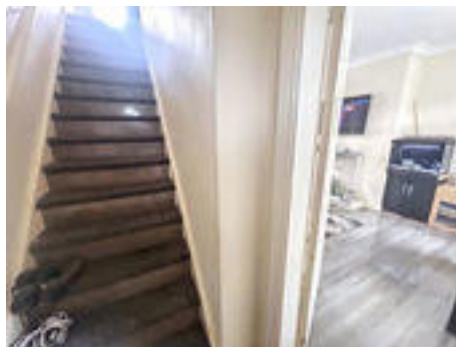
Air conditioning: No

Broadband: ADSL copper wire

Mobile signal coverage: Good

Entrance Hallway

Central heating radiator, stairs to first floor.



Lounge

6.13m x 3.93m (20'1" x 12'10")

Double glazed windows, central heating radiator, feature fireplace.



Kitchen

3.82m x 2.75m (12'6" x 9'0")

Fitted with a range of wall drawer and base units with roll top work surfaces, sink with drainer and mixer tap. Integrated electric oven with gas hob. Double glazed windows, central heating radiator.

Stairs To First Floor

Double glazed window.

Bedroom One

3.48m x 3.12m (11'5" x 10'2")

Double glazed window, central heating radiator, storage cupboard.



Bedroom Two

3.82m x 2.72m (12'6" x 8'11")

Double glazed windows, central heating radiator.



Bathroom

Fitted with panelled bath with shower over, hand wash basin, double glazed window, central heating radiator.



Wc

Low level wc, double glazed window.



Externally





Hodgsons Road, Blyth , Blyth, Northumberland, NE24 1PN

Contact your local branch today for more information on this property:

**76 Waterloo Road, Blyth, Northumberland, NE24 1DG, Tel: 01670 369000, blyth@pattinson.co.uk,
www.pattinson.co.uk**

These particulars, whilst believed to be accurate are set out as a general outline only for guidance and do not constitute any part of an offer or contract. Intending purchasers should not rely on them as statements of representation of fact, but must satisfy themselves by inspection or otherwise as to their accuracy. No person in this firms employment has the authority to make or give any representation or warranty in respect of the property.

