



2 bed ground floor flat to buy in

Mitford Close, Washington, Tyne and Wear, NE38 0HB

£60,000 Starting Bid

🛏 x 2 🚿 x 1 🚻 x 1

Tenure

Leasehold

Car Port parking

Property features

- ✓ Two Bedrooms
- ✓ Ground floor
- ✓ Private garden
- ✓ Ideal investment

Key Information

- ✓ Council Tax: Band A
- ✓ Heating supply: Gas

Arrange a viewing

Sam Tollett
Senior Manager
Washington

0191 4154467
washington@pattinson.co.uk

- ✓ Flexible viewing slots
- ✓ Accompanied viewings

Description

Offered for sale is this spacious two-bedroom ground floor flat situated in the popular Oxclose area of Washington. The property provides well-proportioned accommodation throughout and represents an excellent opportunity for first-time buyers, downsizers and investors alike.

The accommodation briefly comprises an entrance hallway, generous lounge, fitted kitchen, two good-sized bedrooms and a family bathroom. Externally, the property benefits from private rear garden and convenient resident parking.

Ideally located close to local amenities, schools, public transport links and major road networks, the property offers easy access to Washington Town Centre, Sunderland, Newcastle and the A1(M).

Council Tax Band: A

Tenure: Leasehold

Length of Lease: 46

Annual Ground Rent Amount: £20.00

Price: Starting Bid £60,000

Property Type: Ground floor flat

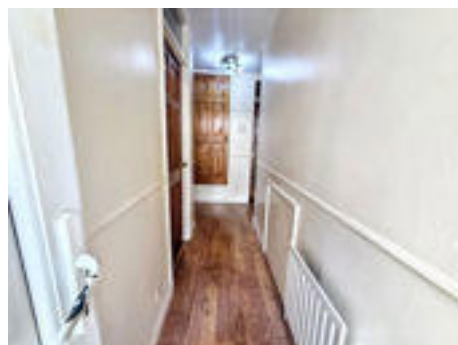
Parking: Car Port

Heating: Gas

External



Hallway



Living Room



Kitchen



Bedroom 1



Bedroom 2



Bathroom





Mitford Close, Washington, Tyne and Wear, NE38 0HB

Contact your local branch today for more information on this property:

55 The Galleries, Washington, Newcastle Upon Tyne, Tyne & Wear, NE38 7SA, Tel: 0191 4154467, Fax: 0191 4154313, washington@pattinson.co.uk, www.pattinson.co.uk

These particulars, whilst believed to be accurate are set out as a general outline only for guidance and do not constitute any part of an offer or contract. Intending purchasers should not rely on them as statements of representation of fact, but must satisfy themselves by inspection or otherwise as to their accuracy. No person in this firm's employment has the authority to make or give any representation or warranty in respect of the property.

