



**Auction**

## 1 bed cottage to buy in DH5

Mildred Street, Houghton Le Spring, Tyne and Wear, DH5 8AU

**£42,000** Starting Bid

 x1  x1  x1

Tenure

**Freehold**

On Street parking

## Property features

- ✓ Ideal First Time Buy Or Investment Opportunity
- ✓ Studio Cottage
- ✓ South/East Facing Rear Yard
- ✓ Off Road Parking
- ✓ Potential Rental Income Of £400/£450 PCM

## Key Information

- ✓ Council Tax: Band A
- ✓ Heating supply: Gas

## Arrange a viewing

Susan Davison  
Branch Manager  
Houghton

0191 5120933  
houghton@pattinson.co.uk

- ✓ Flexible viewing slots
- ✓ Accompanied viewings

## Description

**\*\*SPACIOUS COTTAGE STUDIO \*\*SOUTH/EAST FACING REAR YARD\*\*OFF ROAD PARKING\*\*SOUGHT AFTER AREA\*\*POTENTIAL RENTAL INCOME OF £400/£450 PCM\*\***

Pattinson Estate Agents are excited to offer to the market this spacious studio apartment, which is situated on the popular area of Mildred Street, Houghton Le Spring. Perfectly positioned within close proximity to local shops and other amenities, great transport links and major road links via the A690. Also located within walking distance to Houghton Le Spring Town Centre and popular local schools, as well as being a short drive to Rainton Meadows Nature Reserve, Sunderland & Newcastle City Centers.

This apartment is packed with potential and briefly comprises:- Entrance, living area, fitted kitchen and a three piece bathroom, externally to the rear there is a South/East Facing yard, which gives the option of off road parking.

Early viewing comes highly recommended to appreciate the potential and location of this property. Please contact our Houghton branch to arrange a viewing.

Council Tax Band: A

Tenure: Freehold

Price: Starting Bid £42,000

Property Type: Cottage

Parking: On Street

Heating: Gas

## Property Entrance

The property entrance provides direct access to the living space.

---

## Living Space

6.30m x 4.47m (20'8" x 14'7")

Spacious living area with laminate flooring, a storage cupboard, radiator and a double glazed rear aspect window. This area also give open flow access to the kitchen.



## Kitchen

2.24m x 2.34m (7'4" x 7'8")

Fitted kitchen benefiting from a range of upper and lower units with contrasting worksurfaces, a stainless steel sink unit, plumbing for a washing machine, space for a dryer and an integrated oven. Carpet flooring, a radiator, double glazed rear aspect window and an external door leading to the rear yard.

---

## Bathroom

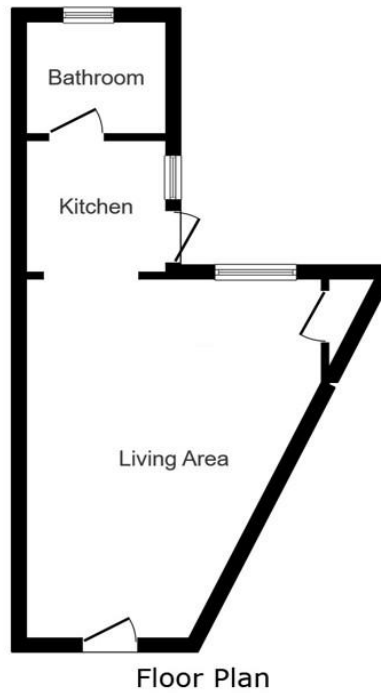
1.33m x 2.12m (4'4" x 6'11")

Three piece bathroom benefiting from a shower cubicle, hand wash basin and WC. Tiled flooring, UPVC cladded splash back, and a double glazed window.



## External

Externally to the rear is a full enclosed South/West facing yard, which gives the option of off road parking.



This floor plan is for illustrative purposes only. It is not drawn to scale. Any measurements, floor areas (including any total floor area), openings and orientations are approximate. No details are guaranteed, they cannot be relied upon for any purpose and do not form any part of any agreement. No liability is taken for any error, omission or misstatement. A party must rely upon its own inspection(s). Powered by [www.Propertybox.io](http://www.Propertybox.io)

Mildred Street, Houghton Le Spring, Tyne and Wear, DH5 8AU

Contact your local branch today for more information on this property:

**14a Newbottle Street, Houghton Le Spring, Tyne and Wear, Tyne & Wear, DH4 4AB, Tel: 0191 5120933,  
[houghton@pattinson.co.uk](mailto:houghton@pattinson.co.uk), [www.pattinson.co.uk](http://www.pattinson.co.uk)**

These particulars, whilst believed to be accurate are set out as a general outline only for guidance and do not constitute any part of an offer or contract. Intending purchasers should not rely on them as statements of representation of fact, but must satisfy themselves by inspection or otherwise as to their accuracy. No person in this firm's employment has the authority to make or give any representation or warranty in respect of the property.

