



**3 bed terraced house to buy in**

Stonecross, Ashington, Northumberland, NE63 8EE

**£125,000**

 x3  x1  x1

Tenure

**Freehold**

On Street parking

**Property features**

-  Three Bedrooms
-  End Terrace House
-  D/G & GCH
-  Front & Rear Gardens
-  Popular West End Location

## Key Information

- ✓ Council Tax: Band A
- ✓ Heating supply: Gas

## Arrange a viewing

Garreth Young  
Branch Manager  
Ashington

01670 568096  
ashington@pattinson.co.uk

- ✓ Flexible viewing slots
- ✓ Accompanied viewings

## Description

\*\*\*THREE BEDROOMS - END TERRACE HOUSE - POPULAR WEST END LOCATION - SPACIOUS FAMILY HOME\*\*\*

We are pleased to welcome to the market this spacious three bedroom end terrace house located at Stonecross in Ashington. Close to the town centre and all its amenities and only a short walk away to the train station offering good transport links to other nearby towns as well as bus routes.

Benefitting from double glazing and gas heating the property comprises: entrance porch, lounge, kitchen/diner, downstairs wc, three bedrooms and a bathroom.

With a lawned garden to the front and an enclosed garden to the rear.

We urge early inspections to avoid disappointment.

Call us now to book your viewing 01670 568096 or email us ashington@pattinson.co.uk

EPC: TBC

Council Tax Band: A

Tenure: Freehold

Price: £125,000

Property Type: Terraced House

Parking: On Street

Heating: Gas

## Entrance Porch

Via double glazed door  
-Door to lounge



## Living Room

5.47m x 4.16m (17'11" x 13'7")

Double glazed window to front  
-Tv point  
-Radiator  
-Door to kitchen



## Additional Image



## Kitchen

5.54m x 3.45m (18'2" x 11'3")

Double glazed window & door to rear  
-Fitted wall & base units with work tops  
-Integrated oven & hob with extractor hood  
-Integrate wine cooler  
-Integrated fridge/freezer  
-Radiator  
-Stairs to first floor



## Additional Image 1



## Downstairs Wc

- Double glazed window
- Low level wc
- Wash hand basin
- Radiator



## First Floor Landing

- Storage cupboard



## Bedroom 1

2.90m x 4.13m (9'6" x 13'6")

- Double glazed window
- Radiator



## Bedroom 2

2.63m x 4.03m (8'7" x 13'2")

- Double glazed window
- Radiator



## Bedroom 3

2.61m x 2.61m (8'6" x 8'6")

- Double glazed window
- Radiator
- Storage cupboard



## Bathroom

2.81m x 1.66m (9'2" x 5'5")

- Double glazed window
- Corner panelled bath
- Corner shower cubicle
- Low level wc
- Pedestal wash hand basin
- Tiled walls



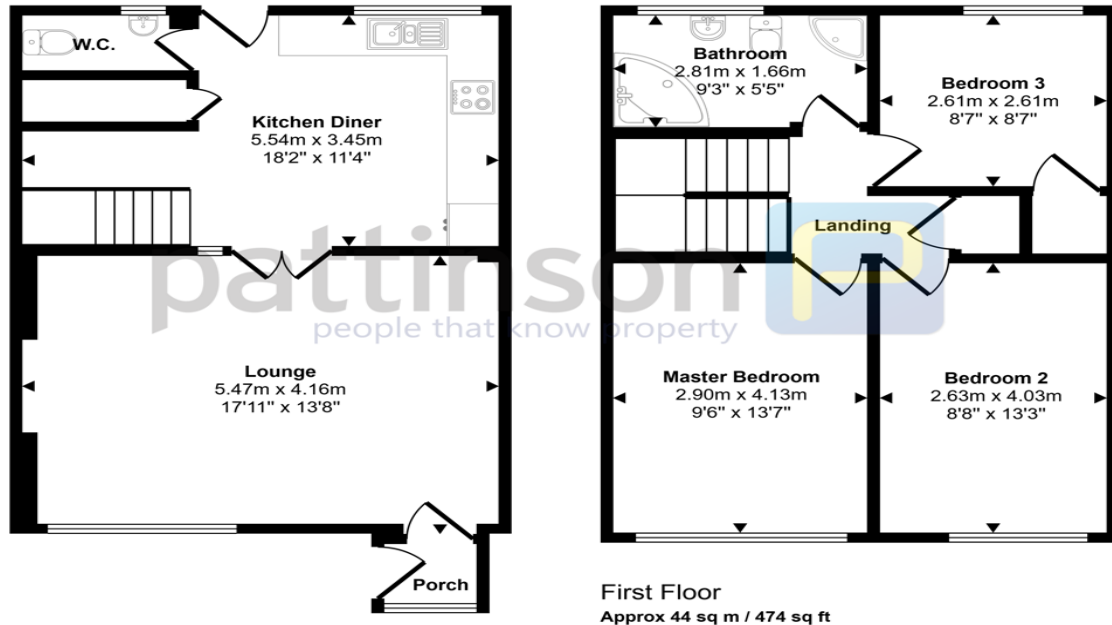
---

## Rear Garden

- Enclosed garden with lawn area
- Brick outhouse



Approx Gross Internal Area  
87 sq m / 939 sq ft



This floorplan is only for illustrative purposes and is not to scale. Measurements of rooms, doors, windows, and any items are approximate and no responsibility is taken for any error, omission or mis-statement. Icons of items such as bathroom suites are representations only and may not look like the real items. Made with Made Snappy 360.

Stonecross, Ashington, Northumberland, NE63 8EE

Contact your local branch today for more information on this property:

**95 Station Road, Ashington, Northumberland, NE63 8RS, Tel: 01670 568096, [ashington@pattinson.co.uk](mailto:ashington@pattinson.co.uk), [www.pattinson.co.uk](http://www.pattinson.co.uk)**

These particulars, whilst believed to be accurate are set out as a general outline only for guidance and do not constitute any part of an offer or contract. Intending purchasers should not rely on them as statements of representation of fact, but must satisfy themselves by inspection or otherwise as to their accuracy. No person in this firm's employment has the authority to make or give any representation or warranty in respect of the property.

