



### 3 bed semi-detached house to buy in NE4

Coventry Gardens, Grainger Park,  
Newcastle upon Tyne, Tyne and Wear,  
NE4 8DX

# £179,950

 x3  x2  x2

Tenure

**Freehold**

Private parking

### Property features

- ✓ Semi Detached House - Three Bedrooms
- ✓ Sought After Location
- ✓ Extended Kitchen
- ✓ Viewing Recommended

## Key Information

- ✓ Council Tax: Band A
- ✓ Heating supply: Gas

## Arrange a viewing

Darren Porter  
Senior Valuer  
West Road

0191 2725880  
west.road@pattinson.co.uk

- ✓ Flexible viewing slots
- ✓ Accompanied viewings

## Description

A well-presented three-bedroom semi-detached home situated in the popular residential area of Grainger Park. Offering spacious accommodation throughout, this extended property benefits from a generous kitchen extension, off-street parking via a driveway to the front, and an enclosed garden to the rear, making it an ideal purchase for families and first-time buyers alike.

The accommodation briefly comprises an entrance hall, comfortable lounge, separate dining room, extended kitchen, utility room, and a ground floor shower room. To the first floor there are three well-proportioned bedrooms and a family bathroom. Externally, the property enjoys a driveway providing off-street parking to the front, while to the rear there is a private garden offering an excellent space for outdoor relaxation and entertaining.

Conveniently located close to local amenities, schools, transport links, and Newcastle City Centre, this property is sure to appeal to a wide range of purchasers.

Early viewing is highly recommended.

Council Tax Band: A

Tenure: Freehold

Price: £179,950

Property Type: Semi-detached house

Parking: Private

Heating: Gas

## Entrance Hallway

Stairs to First Floor.

---

## Lounge

4.05m x 3.61m (13'3" x 11'10")



## Dining Room

3.88m x 3.49m (12'8" x 11'5")



## Kitchen

2.41m x 5.40m (7'10" x 17'8")



## Utility

---

## Shower Room

---

## Stairs to First Floor

---

## Bedroom One

4.01m x 3.76m (13'1" x 12'4")



## Bedroom Two

3.10m x 2.57m (10'2" x 8'5")



## Bedroom Three

2.55m x 2.19m (8'4" x 7'2")



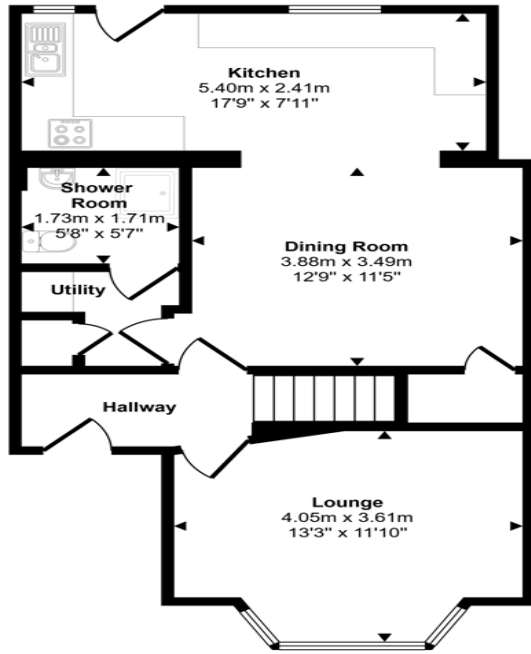
## Bathroom



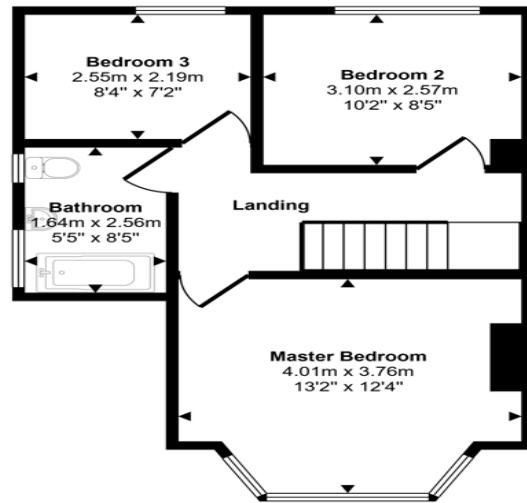
## External



Approx Gross Internal Area  
97 sq m / 1041 sq ft



Ground Floor  
Approx 56 sq m / 601 sq ft



First Floor  
Approx 41 sq m / 440 sq ft

This floorplan is only for illustrative purposes and is not to scale. Measurements of rooms, doors, windows, and any items are approximate and no responsibility is taken for any error, omission or mis-statement. Icons of items such as bathroom suites are representations only and may not look like the real items. Made with Made Snappy 360.

Coventry Gardens, Grainger Park, Newcastle upon Tyne, Tyne and Wear, NE4 8DX

Contact your local branch today for more information on this property:

**158 West Road, Newcastle Upon Tyne, Tyne & Wear, NE4 9QB, Tel: 0191 2725880,  
west.road@pattinson.co.uk, www.pattinson.co.uk**

These particulars, whilst believed to be accurate are set out as a general outline only for guidance and do not constitute any part of an offer or contract. Intending purchasers should not rely on them as statements of representation of fact, but must satisfy themselves by inspection or otherwise as to their accuracy. No person in this firm's employment has the authority to make or give any representation or warranty in respect of the property.

