



To buy

2 bed terraced house to buy in

River View, Lynemouth, Morpeth,
Northumberland, NE61 5TY

£65,000

H x2 D x1 B x1

Tenure

Freehold

On Street parking

Property features

- ✓ Terraced House
- ✓ Two Double Bedrooms
- ✓ Conservatory
- ✓ Garden
- ✓ No Upper Chain - View Now!

Key Information

- ✓ Council Tax: Band A
- ✓ Heating supply: Gas
- ✓ Electric supply: National Grid
- ✓ Water supply: Direct mains water
- ✓ Mobile signal: Good

Arrange a viewing

Garreth Young
Branch Manager
Ashington

01670 568096
ashington@pattinson.co.uk

- ✓ Flexible viewing slots
- ✓ Accompanied viewings

Description

TERRACED HOUSE - TWO DOUBLE BEDROOMS - CONSERVATORY - GARDEN - CLOSE TO THE COAST - NO UPPER CHAIN - VIEW NOW

Pattinson Estate Agents welcome to the sales market this two bedroom terraced house situated on River View in Lynemouth, Morpeth. A quiet village location which is located just a few miles from the coast. The village has a local shops and amenities and sits just 3 miles from Ashington and 9 miles from Morpeth town centre.

Warmed via gas central heating (combi boiler) and with Upvc double glazing throughout. Sold with no upper chain this is an ideal first time buy or investment opportunity. Early viewings are essential to avoid disappointment.

Briefly comprising; entrance hallway, lounge, kitchen and conservatory. To the first floor two bedrooms, bathroom and separate w.c. Externally to the rear an enclosed low maintenance garden with gated access. To the front a small town garden with parking on street.

To arrange your viewing please contact our Ashington Team.

Council Tax Band: A

Tenure: Freehold

Price: £65,000

Property Type: Terraced House

Parking: On Street

Construction materials: Brick and block

Roofing type: Slate tiles

Heating: Gas

Electric: National Grid

Water: Direct mains water

Sewerage: Standard UK domestic

Mobile signal coverage: Good

Entrance Hallway

Via main access door to the front. Stairs to the first floor with understair storage cupboard, radiator.



Lounge

4.58m x 3.42m (15'0" x 11'2")

Window to the front, electric fireplace, radiator.



Lounge Additional



Kitchen

5.33m x 2.25m (17'5" x 7'4")

Window to the rear and sliding patio doors opening into the conservatory. Fitted with a range of wood effect wall, floor and drawer units with black square edge worktops and tiled splashbacks, stainless steel sink and drainer with mixer tap, electric cooker point, plumbing for washing machine, wall mounted gas combi boiler, wood effect vinyl flooring, radiator.



Kitchen Additional



Conservatory

2.35m x 1.82m (7'8" x 5'11")

Full Upvc construction with secure access door opening into the rear garden.



First Floor Landing

Built in storage cupboard, loft access hatch to the ceiling.



Bedroom One

5.33m x 3.06m (17'5" x 10'0")

Two windows to the front. Fitted wardrobes, drawers, overhead storage and dressing table, built in storage cupboard over the stair head, radiator.



Bedroom One Additional



Bedroom Two

3.80m x 2.77m (12'5" x 9'1")

Window to the rear, radiator.



Bathroom

1.63m x 1.54m (5'4" x 5'0")

Frosted window to the rear. Panelled bath with chrome shower over and glass screen door, wash hand basin set in a white vanity unit, chrome heated towel rail, wall mounted vanity mirror. Fully tiled walls.



W.C

Frosted window to the rear, w.c, half tiled walls.



Rear Views



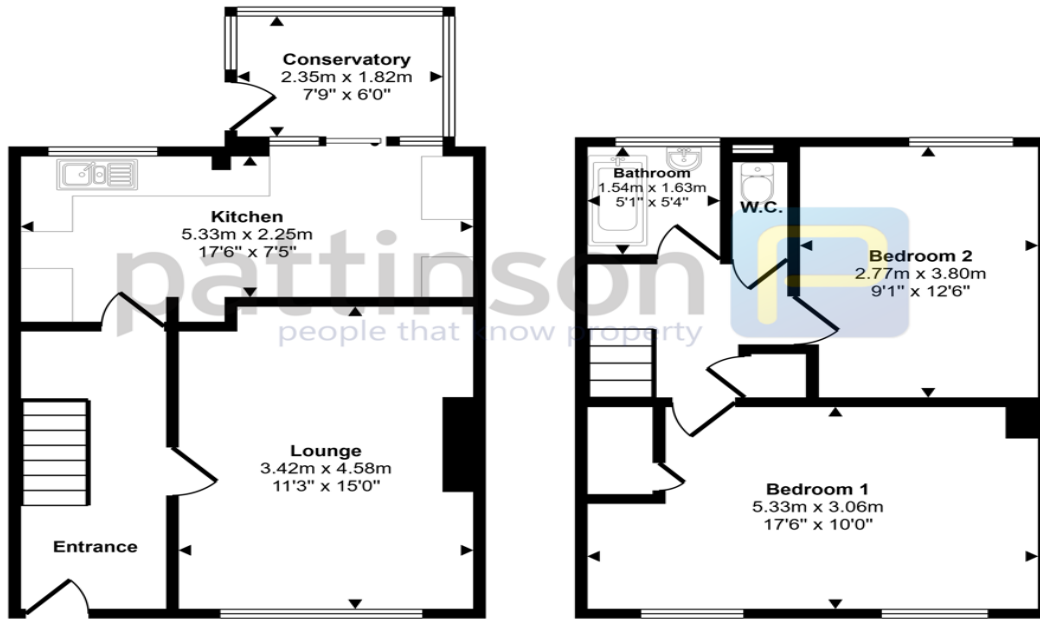
Rear Garden



Rear Elevation



Approx Gross Internal Area
78 sq m / 840 sq ft



Ground Floor
Approx 41 sq m / 442 sq ft

First Floor
Approx 37 sq m / 398 sq ft

This floorplan is only for illustrative purposes and is not to scale. Measurements of rooms, doors, windows, and any items are approximate and no responsibility is taken for any error, omission or mis-statement. Icons of items such as bathroom suites are representations only and may not look like the real items. Made with Made Snappy 360.

River View, Lynemouth, Morpeth, Northumberland, NE61 5TY

Contact your local branch today for more information on this property:

**95 Station Road, Ashington, Northumberland, NE63 8RS, Tel: 01670 568096, ashington@pattinson.co.uk,
www.pattinson.co.uk**

These particulars, whilst believed to be accurate are set out as a general outline only for guidance and do not constitute any part of an offer or contract. Intending purchasers should not rely on them as statements of representation of fact, but must satisfy themselves by inspection or otherwise as to their accuracy. No person in this firm's employment has the authority to make or give any representation or warranty in respect of the property.

