



### 3 bed terraced house to buy in

Windsor Street, Wallsend, Tyne and Wear,  
NE28 8SE

**£139,950** Offers Over

 x3  x1  x1

Tenure

**Freehold**

On Street parking

### Property features

- ✓ Three Bedrooms
- ✓ Terraced House
- ✓ Close to Local Amenities
- ✓ EPC - TBC

## Key Information

- ✓ Council Tax: Band A
- ✓ Heating supply: Gas

## Arrange a viewing

Alia Saidan  
Branch Manager  
Wallsend

0191 2345681  
wallsend@pattinson.co.uk

- ✓ Flexible viewing slots
- ✓ Accompanied viewings

## Description

Situated on the popular Windsor Street in Wallsend, this spacious three-bedroom terraced home offers well-presented accommodation ideally suited to first-time buyers, growing families, or investors alike.

The property comprises a welcoming and generously sized living room with ample space for both lounge and dining furniture, creating a versatile and sociable living environment. To the rear, the kitchen provides a range of fitted units and direct access to the private rear yard.

To the first floor, there are three good-sized bedrooms, all offering comfortable accommodation, together with a modern family bathroom finished to a good standard.

Externally, the property benefits from a private rear yard. Conveniently located within walking distance of Wallsend High Street, residents can enjoy easy access to a wide range of shops, supermarkets, cafés, and other local amenities. Excellent transport links, including nearby bus routes and Metro services, provide straightforward access to Newcastle city centre and surrounding areas.

Early viewing is highly recommended to fully appreciate the space, location, and potential this fantastic home has to offer.

Council Tax Band: A

Tenure: Freehold

Price: Offers Over £139,950

Property Type: Terraced House

Parking: On Street

Heating: Gas

## External Front



## Living Room

5.512m x 4.537m (18'1" x 14'10")



## Kitchen

5.524m x 2.716m (18'1" x 8'10")



## Bedroom 1

4.578m x 3.009m (15'0" x 9'10")



## Bedroom 2

4.535m x 2.43m (14'10" x 7'11")



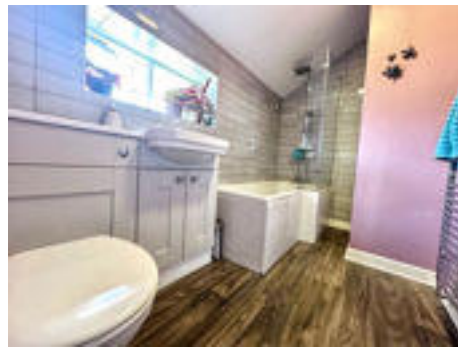
## Bedroom 3

2.798m x 2.394m (9'2" x 7'10")



## Bathroom

3.051m x 1.688m (10'0" x 5'6")



## Rear Garden





Windsor Street, Wallsend, Tyne and Wear, NE28 8SE

Contact your local branch today for more information on this property:

**157 High Street East, Wallsend, Newcastle Upon Tyne, Tyne & Wear, NE28 7RL, Tel: 0191 2345681,  
wallsend@pattinson.co.uk, www.pattinson.co.uk**

These particulars, whilst believed to be accurate are set out as a general outline only for guidance and do not constitute any part of an offer or contract. Intending purchasers should not rely on them as statements of representation of fact, but must satisfy themselves by inspection or otherwise as to their accuracy. No person in this firm's employment has the authority to make or give any representation or warranty in respect of the property.

