



1 bed flat to buy in UB2

Burket Close, Southall, Middlesex, UB2 5NU

£165,000 Starting Bid

 x1  x1  x1

Tenure

Leasehold

Private parking

Property features

- ✓ Second Floor Apartment With No Onward Chain
- ✓ Bright Open Plan Reception Featuring A Juliet Balcony
- ✓ Conveniently Located Near Southall Broadway (Elizabeth Line) & Local Amenities
- ✓ Spacious Double Bedroom
- ✓ EPC Rating C

Key Information

- ✓ Council Tax: Band B
- ✓ EPC Rating: C
- ✓ Heating supply: Electric
- ✓ Electric supply: National Grid
- ✓ Water supply: Direct mains water
- ✓ Broadband: FTTP (fibre to the premises)
- ✓ Mobile signal: Good

Arrange a viewing

Vinny Dadhria
Branch Manager
London Auction

0207 867 3382
london@pattinson.co.uk

- ✓ Flexible viewing slots
- ✓ Accompanied viewings

Description

Situated on the second floor, In Burket Close Norwood Green this well presented two bedroom flat offers a fantastic opportunity for first time buyers & Investors.

The property features a spacious double bedroom, a bright open plan living area with a charming Juliet balcony that allows plenty of natural light to flow through. A well maintained bathroom adds to the homes overall appeal.

Location is a key highlight, with excellent transport connections nearby including Elizabeth Line, providing fast and convenient access into Central London as well as easy access to the M4 for those commuting by car. The property is also just a short distance from Southall Broadway known for its vibrant atmosphere and wide variety of international restaurants, shops & amenities.

Council Tax Band: B

Tenure: Leasehold

Length of Lease: 67

Annual Ground Rent Amount: £90.00

Annual Service Charge Amount: £2,600.00

Price: Starting Bid £165,000

Property Type: Flat

Parking: Private

Year built: 1996

Construction materials: Brick and block

Risk of floods and or erosion: No

Flooded in last 5 years: No

Flood defences: No

Planning permissions or proposals for development: No

Coalfield or mining area: No

Listed property: No

Conservation area: No

Public rights of way: No

Adaptions for accessibility: No

Restrictions: No

Required access: No

Heating: Electric

Electric: National Grid

Water: Direct mains water

Water meter: No

Sewerage: Standard UK domestic

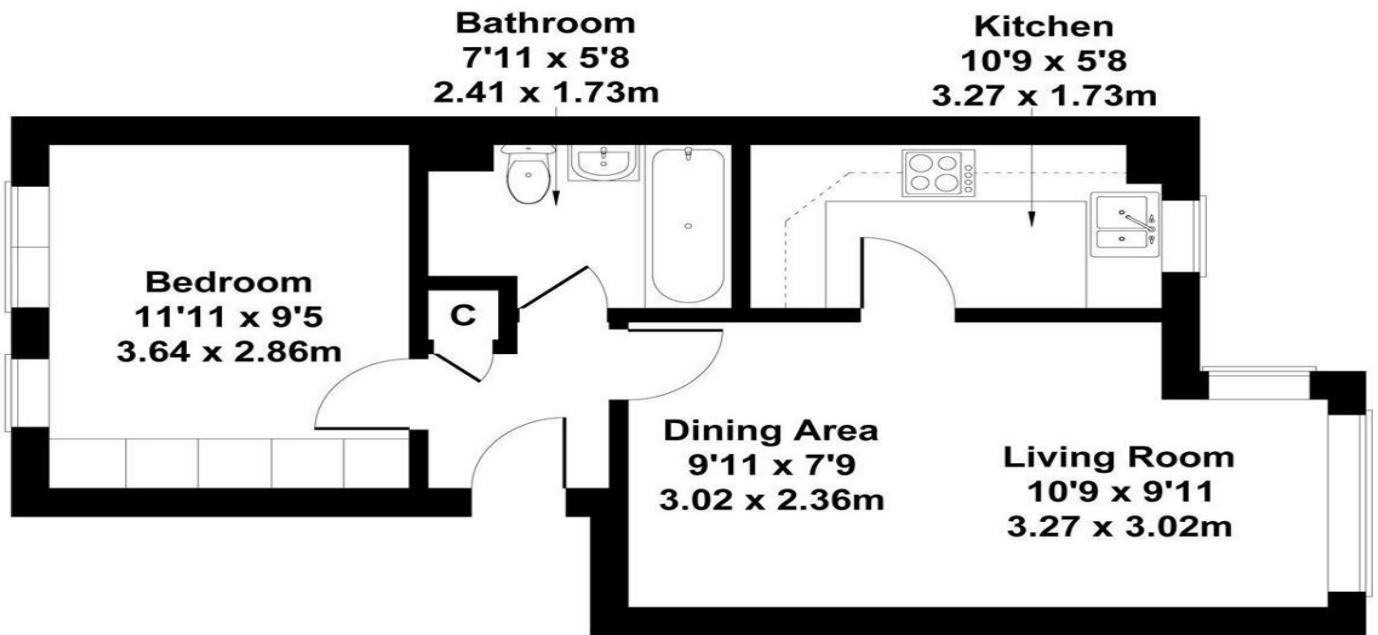
Air conditioning: No

Broadband: FTTP (fibre to the premises)

Mobile signal coverage: Good

Burket Close, Southall

Approximate Gross Internal Area
431 sq ft - 40 sq m



Not to Scale. Produced by The Plan Portal 2026
For Illustrative Purposes Only.



Energy Efficiency Rating		
	Current	Potential
<i>Very energy efficient - lower running costs</i>		
(92-100) A		
(81-91) B		
(69-80) C	69	79
(55-68) D		
(39-54) E		
(21-38) F		
(1-20) G		
<i>Not energy efficient - higher running costs</i>		
England, Scotland & Wales	EU Directive 2002/91/EC	

Burket Close, Southall, Middlesex, UB2 5NU

Contact your local branch today for more information on this property:

**Mercantile House Silverlink, Wallsend, Tyne and Wear, NE28 9NY, Tel: 0207 867 3382,
london@pattinson.co.uk, www.pattinson.co.uk**

These particulars, whilst believed to be accurate are set out as a general outline only for guidance and do not constitute any part of an offer or contract. Intending purchasers should not rely on them as statements of representation of fact, but must satisfy themselves by inspection or otherwise as to their accuracy. No person in this firm's employment has the authority to make or give any representation or warranty in respect of the property.

