



3 bed semi-detached house to buy in DH6

Watson Close, Wheatley Hill, Durham, Durham, DH6 3QX

£59,999 Starting Bid

 x 3  x 1  x 1

Tenure

Freehold

Property features

- ✓ No onward chain
- ✓ Three-bedroom semi-detached
- ✓ Resale value of £90,000–£95,000
- ✓ Potential rental income of approximately £700 PCM
- ✓ Rewired throughout

Allocated parking

Garden

Key Information

- ✓ Council Tax: Band A
- ✓ Heating supply: Gas
- ✓ Electric supply: National Grid
- ✓ Water supply: Direct mains water

Arrange a viewing

Claire Nasir
Senior Manager
Peterlee

0191 5183521
peterlee@pattinson.co.uk

- ✓ Flexible viewing slots
- ✓ Accompanied viewings

Description

No Chain | Rewired | South-West Facing Garden | Countryside Views | Resale Value £90,000-£95,000 | Excellent Investment Potential

Offered to the market with no onward chain, this attractive three-bedroom semi-detached home enjoys a pleasant semi-rural setting in Wheatley Hill, boasting open countryside views, a generous rear garden, and ample off-street parking.

The property has been rewired, benefits from gas central heating and UPVC double glazing, and offers spacious accommodation throughout. Internally, the home comprises a welcoming lounge, modern family bathroom, and three well-proportioned bedrooms, making it an ideal purchase for first-time buyers, families, or investors.

Externally, the property features a south-west facing rear garden, perfect for enjoying the afternoon and evening sun, while the front provides ample parking for multiple vehicles. The semi-rural position offers a peaceful lifestyle with the convenience of local amenities, schools, and transport links close by.

For investors, the property presents an excellent buy-to-let opportunity with a potential rental income of approximately £700 PCM, generating a strong potential yield and benefiting from consistent rental demand in the area. The property also offers an estimated resale value of £90,000-£95,000, providing attractive future growth and exit potential.

Combining modern improvements, generous outdoor space, countryside surroundings, and excellent value for money, this is a property that should not be missed.

Council Tax Band: A

Tenure: Freehold

Price: Starting Bid £59,999

Property Type: Semi-detached house

USPs: Garden, Chain free

Parking: Allocated

Heating: Gas

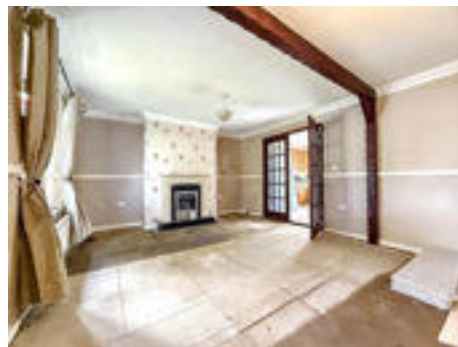
Electric: National Grid

Water: Direct mains water

Sewerage: Standard UK domestic

Lounge

5.35m x 3.85m (17'6" x 12'7")



Kitchen Diner

5.42m x 3.42m (17'9" x 11'2")



Bedroom One

3.92m x 3.41m (12'10" x 11'2")



Bedroom Two

3.42m x 3.39m (11'2" x 11'1")



Bedroom Three

2.06m x 1.85m (6'9" x 6'0")



Family Bathroom





Watson Close, Wheatley Hill, Durham, Durham, DH6 3QX

Contact your local branch today for more information on this property:

**2 Yoden Way, Peterlee, County Durham, SR8 1BP, Tel: 0191 5183521, peterlee@pattinson.co.uk,
www.pattinson.co.uk**

These particulars, whilst believed to be accurate are set out as a general outline only for guidance and do not constitute any part of an offer or contract. Intending purchasers should not rely on them as statements of representation of fact, but must satisfy themselves by inspection or otherwise as to their accuracy. No person in this firm's employment has the authority to make or give any representation or warranty in respect of the property.

