



### 3 bed maisonette to buy in NE37

Neville Court, Washington, Tyne and Wear, NE37 3DY

**£33,000** Starting Bid

 x3  x1  x1

Tenure

**Leasehold**

Off Street parking

### Property features

- ✓ To Be Sold Via Online Auction
- ✓ Tenanted Investment
- ✓ Three Bedrooms
- ✓ Maisonette
- ✓ EPC Rating C

## Key Information

- ✓ Council Tax: Band A
- ✓ EPC Rating: C
- ✓ Heating supply: Air Source Heat Pump

## Arrange a viewing

Sam Tollett  
Senior Manager  
Washington

0191 4154467  
washington@pattinson.co.uk

- ✓ Flexible viewing slots
- ✓ Accompanied viewings

## Description

To Be Sold Via Online Auction, Fees Apply.

Tenanted Investment Opportunity – Long-Term Tenant in Situ

An excellent opportunity to acquire this spacious three-bedroom ground floor maisonette, offered for sale as a tenanted investment with a long-term tenant currently paying £500 per calendar month, presenting scope for future rental growth.

The accommodation is well laid out and briefly comprises an entrance hall with stairs leading to the first-floor landing, a fitted kitchen, and a generous open-plan living and dining room with patio doors opening onto a private enclosed rear garden, providing an attractive feature for tenants.

To the first floor are three well-proportioned double bedrooms, a family bathroom, and a separate WC, offering practical family accommodation.

Externally, the property benefits from a private rear garden, while the surrounding development enjoys well-maintained communal gardens. Conveniently situated close to a range of local amenities, schools, and excellent transport links, this property represents an ideal addition to any investment portfolio, combining immediate rental income with strong long-term potential.

Council Tax Band: A

Tenure: Leasehold

Price: Starting Bid £33,000

Property Type: Maisonette

Parking: Off Street

Heating: Air Source Heat Pump

## External Front



## Entrance Hall



## Living Room

*7.112m x 3.192m (23'4" x 10'5")*



## Dining Room



## Kitchen

*3.313m x 3.167m (10'10" x 10'4")*



## Bedroom 1

3.705m x 3.182m (12'1" x 10'5")



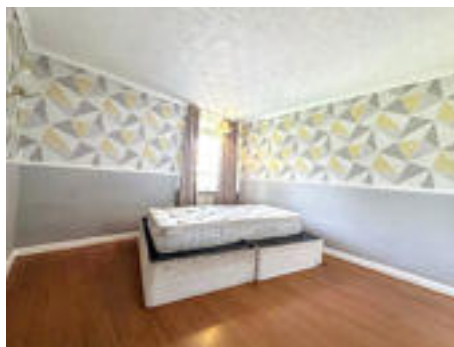
## Bedroom 2

3.19m x 3.182m (10'5" x 10'5")



## Bedroom 3

3.42m x 3.206m (11'2" x 10'6")



## Bathroom

2.193m x 1.876m (7'2" x 6'1")



## WC

1.572m x 0.782m (5'1" x 2'6")



## Rear Garden





Energy Efficiency Rating		
	Current	Potential
<i>Very energy efficient - lower running costs</i>		
(92-100) <b>A</b>		
(81-91) <b>B</b>		
(69-80) <b>C</b>	74	79
(55-68) <b>D</b>		
(39-54) <b>E</b>		
(21-38) <b>F</b>		
(1-20) <b>G</b>		
<i>Not energy efficient - higher running costs</i>		
<b>England, Scotland &amp; Wales</b>	EU Directive 2002/91/EC	

Neville Court, Washington, Tyne and Wear, NE37 3DY

Contact your local branch today for more information on this property:

**55 The Galleries, Washington, Newcastle Upon Tyne, Tyne & Wear, NE38 7SA, Tel: 0191 4154467, Fax: 0191 4154313, [washington@pattinson.co.uk](mailto:washington@pattinson.co.uk), [www.pattinson.co.uk](http://www.pattinson.co.uk)**

These particulars, whilst believed to be accurate are set out as a general outline only for guidance and do not constitute any part of an offer or contract. Intending purchasers should not rely on them as statements of representation of fact, but must satisfy themselves by inspection or otherwise as to their accuracy. No person in this firm's employment has the authority to make or give any representation or warranty in respect of the property.

