



Commercial Development in SK17

Scarsdale Place, Buxton, Derbyshire, SK17 6EF

£450,000 Starting Bid

Tenure

Freehold

Property features

- ✓ Freehold town-centre commercial premise
- ✓ Substantial multi-storey accommodation arranged over four floors
- ✓ Two full trading floors, each with its own bar, DJ area and seating
- ✓ Large dance floor plus a separate games room / function space

Arrange a viewing

Lisa Neil
Branch Manager
Commercial National

0191 737 1154
commercial@pattinson.co.uk

- ✓ Flexible viewing slots
- ✓ Accompanied viewings

Description

Sold via Secure Sale online bidding. Terms & Conditions apply

This property will be legally prepared enabling any interested buyer to secure the property immediately once their bid/offer has been accepted. Ultimately a transparent process which provides speed, security and certainty for all parties.

Basement

Cellar / Storage – A generous basement cellar and storage area, well suited to use as a beer cellar and dry-goods store, with staircase rising to the ground floor.

Ground Floor

Entrance & Hallways – Customer entrance opening to internal hallways which serve the cloakroom facilities and provide access to the staircases rising to the first-floor trading area and descending to the basement cellar.

Ladies' WC – A range of WC cubicles with wash hand basins.

Gents' WC – WC cubicle(s) with urinals and wash hand basin.

Store Room – A large ground-floor store room, with two further store rooms providing additional storage.

First Floor – Principal Trading Floor

Dance Floor – A large open-plan dance floor forming the heart of the venue.

Main Bar – A well-positioned servery bar with back-bar storage.

Second Bar – A further servery bar adjacent to the office and staircase.

Seating Areas – Two fixed seating areas providing customer booth/banquette seating.

DJ Area – Dedicated DJ booth/area.

Office – A management office off the trading floor.

Storage – Storage area off the trading floor.

Second Floor

Games Room – A large second-floor games room / function space.

Bar – A further server bar with back-bar storage.

DJ Area – Dedicated DJ area.

Seating Areas – Three fixed seating areas with booth/banquette seating.

Ladies' & Gents' WC – Separate ladies' and gents' WC facilities serving this floor.

Storage – Two store rooms.

Hallway – Internal hallway with staircase.

Rightmove-Style Summary -

A rare opportunity to acquire the freehold of a substantial and versatile multi-storey commercial premises, the building has been trading as a nightclub for the last 26 years. The property has a very rare, late night & all day trading license over 7 days a week - 11am - 4/5am. Purchased originally as a working mans social club, until major developed and stripped back to its shell, to convert into the nightclub, steels on all floors were fitted, to support a high load bearing capacity along with steels fitted for roof support. Arranged over four floors and providing two full trading levels – each with its own bar, DJ area and seating – together with a basement cellar, ground-floor cloakroom facilities and ample storage throughout, the property offers significant scope for a range of leisure, hospitality or alternative commercial uses, subject to the necessary consents.

Location

Scarsdale Place occupies a prime position in the heart of Buxton, set just off High Street (A515) and adjacent to the historic Market Place in the popular Higher Buxton quarter. The immediate area benefits from strong, consistent footfall, with neighbouring occupiers including a Co-op, Sainsbury's and a variety of independent retailers, cafés and hot-food establishments. Buxton is a celebrated Peak District spa town attracting around one million visitors each year, with Buxton railway station – offering services to Manchester Piccadilly in under an hour – within comfortable walking distance.

Accommodation

Basement – Cellar / storage.

Ground Floor – Customer entrance and hallways, ladies' and gents' WCs, large store room and two further store rooms, with staircases to the basement and first floor.

First Floor – Principal trading floor with large dance floor, two bars, two seating areas, DJ area, office and storage.

Second Floor – Games room, bar, DJ area, three seating areas, ladies' and gents' WCs, two store rooms and hallway.

The property occupies a central town-centre position with public car parking and short-stay parking bays available nearby.

Tenure & Terms

Tenure: Freehold.

Business, Fixtures & Fittings: Only the freehold is offered for sale. Should a purchaser wish to continue operating the premises as a nightclub, the business together with its fixtures and fittings is available by separate negotiation.

EPC Rating: To be confirmed.

Business Rates / Rateable Value: To be confirmed – interested parties should make their own enquiries with High Peak Borough Council.

Offering genuine versatility in a prime and proven town-centre location, this is an exciting opportunity for operators and investors alike. Viewing is highly recommended to appreciate the scale and potential on offer – please contact the office to arrange an appointment.

Price: Starting Bid £450,000

Property Type: Commercial Development

Business Type: Other/Unspecified

Parking: None

Description

A rare opportunity to acquire the freehold of a substantial and versatile multi-storey commercial premises, most recently trading as a popular town-centre nightclub.

Location

Scarsdale Place occupies a prime position in the heart of Buxton, set just off High Street (A515) and adjacent to the historic Market Place in the popular Higher Buxton quarter.

EPC

Rating B

Tenure

DY244304 - Freehold

Additional Information

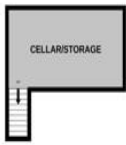
For further information please contact our office direct on 0191 737 1154, or alternatively via e-mail on commercial@pattinson.co.uk. With regards to viewing the subject property, this is to be done strictly by appointment through Keith Pattinson Commercial department. Please contact us to arrange an internal inspection, or to register your interest.

BASEMENT

GROUND FLOOR

1ST FLOOR

2ND FLOOR



Whilst every attempt has been made to ensure the accuracy of the floorplan contained here, measurements of doors, windows, rooms and any other items are approximate and no responsibility is taken for any error, omission or mis-statement. This plan is for illustrative purposes only and should be used as such by any prospective purchaser. The services, systems and appliances shown have not been tested and no guarantee as to their operability or efficiency can be given.
Made with Metropix ©2026

Scarsdale Place, Buxton, Derbyshire, SK17 6EF

Contact your local branch today for more information on this property:

**Keith Pattinson Silverlink, Wallsend, Tyne and Wear, NE28 9NY, Tel: 0191 737 1154 ,
commercial@pattinson.co.uk, www.pattinson.co.uk**

These particulars, whilst believed to be accurate are set out as a general outline only for guidance and do not constitute any part of an offer or contract. Intending purchasers should not rely on them as statements of representation of fact, but must satisfy themselves by inspection or otherwise as to their accuracy. No person in this firms employment has the authority to make or give any representation or warranty in respect of the property.

