



2 bed terraced house to buy in

Princeport Road, Portrack,
Stockton-on-Tees, Durham, TS18 2JB

£75,000

 x 2  x 1  x 2

Tenure

Freehold

On Street parking

Property features

- ✓ POPULAR LOCATION
- ✓ IDEAL FIRST HOME
- ✓ INVESTMENT OPPORTUNITY
- ✓ MODERN KITCHEN
- ✓ EPC Rating D

Key Information

- ✓ Council Tax: Band A
- ✓ EPC Rating: D
- ✓ Heating supply: Gas
- ✓ Electric supply: National Grid
- ✓ Water supply: Direct mains water
- ✓ Mobile signal: Good

Arrange a viewing

Melanie Devine
Branch Manager
Stockton On Tees

01642 210132
stockton@pattinson.co.uk

- ✓ Flexible viewing slots
- ✓ Accompanied viewings

Description

Ideal for first time buyers or investors alike, this attractive terraced home in the popular Portrack area of Stockton offers ready to move into accommodation with the added benefit of strong rental potential. With an anticipated rental income of approximately £650 PCM, the property could generate a gross yield of around 8.7% based on the asking price, making it an appealing addition to any portfolio.

Positioned conveniently for local amenities, schools and transport links, the home is well suited for those needing easy access across Stockton and the surrounding areas. Set behind a brick wall with a mature and well maintained frontage, the property offers a welcoming first impression from the outset.

Accommodation briefly comprises; entrance hall with stairs to the first floor, a spacious living room to the front elevation and to the rear an impressive open plan living and dining space incorporating a modern fitted kitchen with breakfast bar, creating a sociable and practical layout ideal for everyday living. A rear door leads out to the enclosed yard where two useful brick outbuildings provide additional storage.

To the first floor are two generously sized bedrooms along with a modern shower room. Further benefits include UPVC double glazing, gas central heating via a combination boiler and useful storage areas beneath the stairs and from the landing.

A property that would make an excellent first step onto the property ladder or a smart buy to let investment. Early viewing is strongly recommended. Contact the Stockton team today to arrange your appointment.

Council Tax Band: A

Tenure: Freehold

Price: £75,000

Property Type: Terraced House

Parking: On Street

Heating: Gas

Electric: National Grid

Water: Direct mains water

Sewerage: Standard UK domestic

Air conditioning: No

Mobile signal coverage: Good

Accommodation

Living Room

4.13m x 3.45m (13'6" x 11'3")



Dining Room

4.94m x 2.72m (16'2" x 8'11")



Kitchen



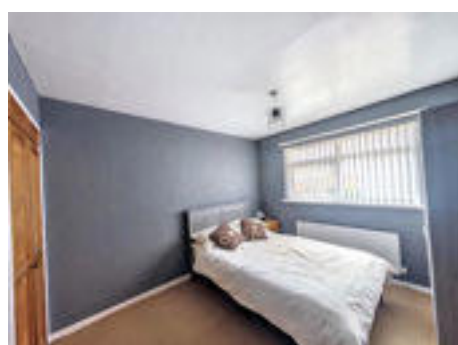
Bedroom 1

4.97m x 2.89m (16'3" x 9'5")



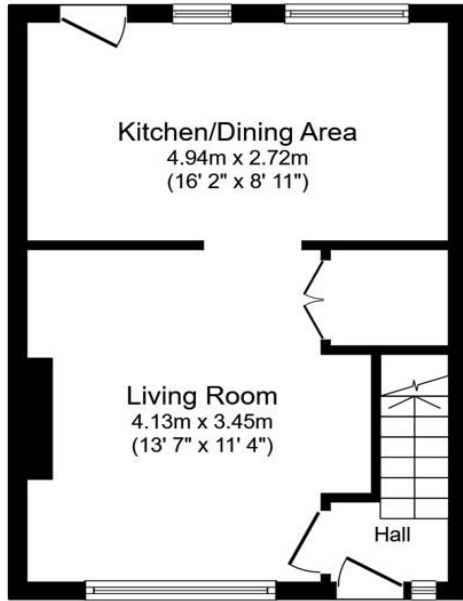
Bedroom 2

3.21m x 2.96m (10'6" x 9'8")

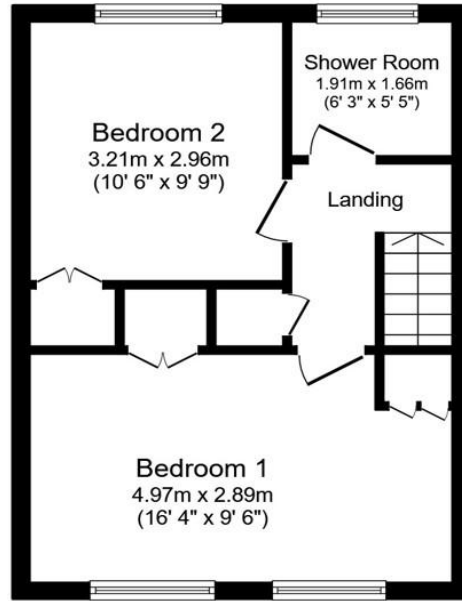


Shower Room





Ground Floor



First Floor

Total floor area: 68.7 sq.m. (739 sq.ft.)

This floor plan is for illustrative purposes only. It is not drawn to scale. Any measurements, floor areas (including any total floor area), openings and orientations are approximate. No details are guaranteed, they cannot be relied upon for any purpose and do not form any part of any agreement. No liability is taken for any error, omission or misstatement. A party must rely upon its own inspection(s). Powered by www.Propertybox.io

Energy Efficiency Rating		
	Current	Potential
<i>Very energy efficient - lower running costs</i>		
(92-100) A		
(81-91) B		
(69-80) C		74
(55-68) D	67	
(39-54) E		
(21-38) F		
(1-20) G		
<i>Not energy efficient - higher running costs</i>		
England, Scotland & Wales	EU Directive 2002/91/EC	

Princeport Road, Portrack, Stockton-on-Tees, Durham, TS18 2JB

Contact your local branch today for more information on this property:

20 Bishop Street, Stockton, Cleveland, TS18 1SY, Tel: 01642 210132, stockton@pattinson.co.uk, www.pattinson.co.uk

These particulars, whilst believed to be accurate are set out as a general outline only for guidance and do not constitute any part of an offer or contract. Intending purchasers should not rely on them as statements of representation of fact, but must satisfy themselves by inspection or otherwise as to their accuracy. No person in this firm's employment has the authority to make or give any representation or warranty in respect of the property.

