



4 bed terraced house to buy in

Northumbria Walk, west denton ,
Newcastle upon Tyne, Tyne and Wear,
NE5 2RR

£110,000 Offers Over

 x4  x1  x1

Tenure

Freehold

Property features

- ✓ Terraced House - Four Bedrooms
- ✓ Sought After Location
- ✓ Gas Central Heating
- ✓ Viewing Recommended
- ✓ EPC Rating C

Key Information

- ✓ Council Tax: Band A
- ✓ EPC Rating: C
- ✓ Heating supply: Gas

Arrange a viewing

Darren Porter
Senior Valuer
West Road

0191 2725880
west.road@pattinson.co.uk

- ✓ Flexible viewing slots
- ✓ Accompanied viewings

Description

A well-presented and spacious four-bedroom terraced home, ideally located on Northumbria Walk in the sought-after area of West Denton, Newcastle upon Tyne. This attractive property offers versatile accommodation, making it an excellent choice for families, first-time buyers, or investors alike.

The property benefits from gas central heating and is well maintained throughout, providing a comfortable and welcoming living environment. The layout offers generous room sizes and flexibility for modern living.

Situated in a convenient location, the home enjoys easy access to a variety of local shops, supermarkets, and everyday amenities. There are also excellent transport links nearby, providing straightforward access into Newcastle city centre and surrounding areas, making it ideal for commuters.

Externally, the property features a private garden to the rear, perfect for relaxing, entertaining, or family use.

The property benefits from a rewire in 2022 and a updated boiler in 2023.

Early viewing is highly recommended to fully appreciate the space, condition, and convenient location this property has to offer.

Council Tax Band: A

Tenure: Freehold

Price: Offers Over £110,000

Property Type: Terraced House

Heating: Gas

Entrance Hall

Cloak/WC

Lounge

3.60m x 4.50m (11'9" x 14'9")



Kitchen Diner

5.50m x 3.60m (18'0" x 11'9")



Stairs to First Floor

Bedroom One

4.60m x 2.70m (15'1" x 8'10")



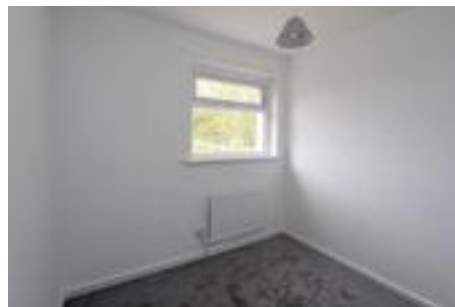
Bedroom Two

3.90m x 2.70m (12'9" x 8'10")



Bedroom Three

2.30m x 2.10m (7'6" x 6'10")



Bedroom Four

4.50m x 2.00m (14'9" x 6'6")



Bathroom



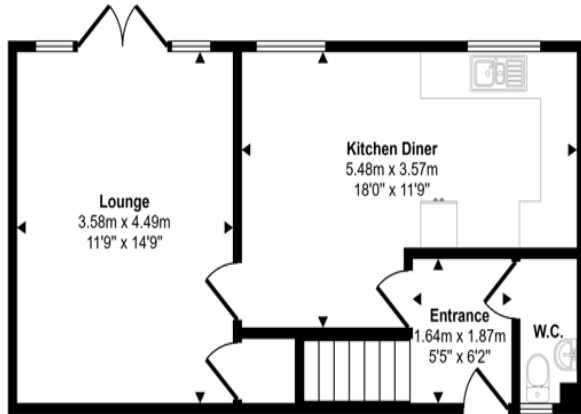
Garden



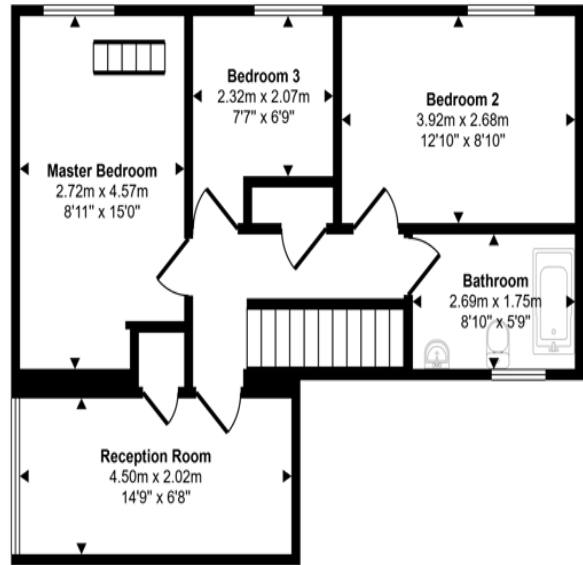
Loft Storage



Approx Gross Internal Area
95 sq m / 1023 sq ft



Ground Floor
Approx 42 sq m / 451 sq ft



First Floor
Approx 53 sq m / 572 sq ft

This floorplan is only for illustrative purposes and is not to scale. Measurements of rooms, doors, windows, and any items are approximate and no responsibility is taken for any error, omission or mis-statement. Icons of items such as bathroom suites are representations only and may not look like the real items. Made with Made Snappy 360.

Energy Efficiency Rating		
	Current	Potential
<i>Very energy efficient - lower running costs</i>		
(92-100) A		
(81-91) B		84
(69-80) C	71	
(55-68) D		
(39-54) E		
(21-38) F		
(1-20) G		
<i>Not energy efficient - higher running costs</i>		
England, Scotland & Wales		EU Directive 2002/91/EC

Northumbria Walk, west denton , Newcastle upon Tyne, Tyne and Wear, NE5 2RR

Contact your local branch today for more information on this property:

**158 West Road, Newcastle Upon Tyne, Tyne & Wear, NE4 9QB, Tel: 0191 2725880,
west.road@pattinson.co.uk, www.pattinson.co.uk**

These particulars, whilst believed to be accurate are set out as a general outline only for guidance and do not constitute any part of an offer or contract. Intending purchasers should not rely on them as statements of representation of fact, but must satisfy themselves by inspection or otherwise as to their accuracy. No person in this firms employment has the authority to make or give any representation or warranty in respect of the property.

