

1 bed apartment to buy in NE3

Haydon Close, Newcastle upon Tyne, Tyne and Wear, NE3 2BY

£40,000 Starting Bid

 x1  x1  x1

Tenure

Leasehold

Garage parking

Property features

-  Council Tax Band A
-  EPC D
-  Tenanted Investment Property
-  Central Location
-  EPC Rating D

Key Information

- ✓ Council Tax: Band A
- ✓ EPC Rating: D
- ✓ Heating supply: Electric
- ✓ Electric supply: National Grid
- ✓ Water supply: Direct mains water
- ✓ Mobile signal: Good

Arrange a viewing

Maurice Porteous
Branch Manager
Gosforth

0191 2303365
gosforth@pattinson.co.uk

- ✓ Flexible viewing slots
- ✓ Accompanied viewings

Description

For sale via secure sale - Fees apply

We are pleased to welcome to the market this fantastic tenanted ground floor, one-bedroom apartment in the vibrant area of Newcastle upon Tyne. This property serves as a great example of city living and is perfectly situated for both local amenities and transport links.

The property offers a savvy investor a tenanted investment. Upon entering the property, you will find a single bedroom, sizeable reception room, fitted bathroom and kitchen.

This charming abode falls into Council Tax Band A, offering an affordable living proposition, while the EPC rating is D. While upgrades might be beneficial, the property provides an excellent canvas for personalisation.

As a tenanted investment property, this apartment is currently gathering a monthly rent of £550 PCM, offering potential investors an instant return on their investment along with a strong yield. Its coveted location in Newcastle upon Tyne, coupled with its alluring features, render it an enticing proposition for both first-time landlords and seasoned investors.

This impressive one-bedroom apartment offers quintessential city living in one of Newcastle's much sought-after locations and makes for a smart acquisition for those wanting to add to their investment portfolio. Be sure not to miss out – get in touch with us at Pattinson Estate Agents to arrange a viewing today.

Council Tax Band: A

Tenure: Leasehold

Length of Lease: 118

Price: Starting Bid £40,000

Property Type: Apartment

Parking: Garage, On Street

Heating: Electric

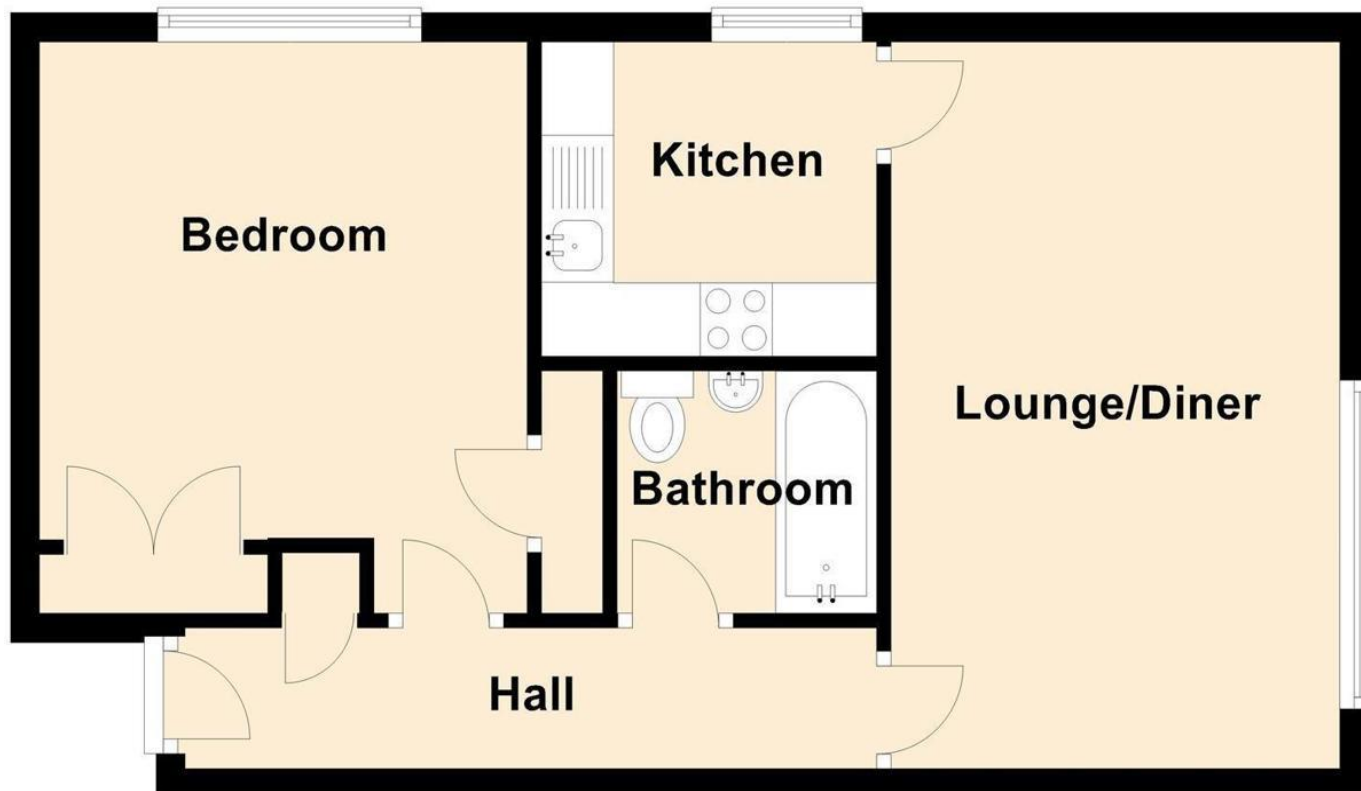
Electric: National Grid


Water: Direct mains water

Sewerage: Standard UK domestic

Mobile signal coverage: Good

Third Floor



Energy Efficiency Rating		
	Current	Potential
<i>Very energy efficient - lower running costs</i>		
(92-100) A		
(81-91) B		
(69-80) C		76
(55-68) D	55	
(39-54) E		
(21-38) F		
(1-20) G		
<i>Not energy efficient - higher running costs</i>		
England, Scotland & Wales		EU Directive 2002/91/EC 

Haydon Close, Newcastle upon Tyne, Tyne and Wear, NE3 2BY

Contact your local branch today for more information on this property:

210 High Street, Gosforth, Newcastle Upon Tyne, Tyne & Wear, NE3 1HH, Tel: 0191 2303365, gosforth@pattinson.co.uk, www.pattinson.co.uk

These particulars, whilst believed to be accurate are set out as a general outline only for guidance and do not constitute any part of an offer or contract. Intending purchasers should not rely on them as statements of representation of fact, but must satisfy themselves by inspection or otherwise as to their accuracy. No person in this firm's employment has the authority to make or give any representation or warranty in respect of the property.

