



2 bed terraced house to buy in

Tonge Moor Road, Bolton, Greater Manchester, BL2 2JR

£100,000 Starting Bid

 x2  x1  x1

Tenure

Leasehold

On Street parking

Property features

- ✓ Sought After Area
- ✓ Garage To Rear
- ✓ 2 Bedrooms
- ✓ Generous Rooms Throughout
- ✓ EPC Rating C

Key Information

- ✓ Council Tax: Band A
- ✓ EPC Rating: C
- ✓ Heating supply: Gas
- ✓ Electric supply: National Grid
- ✓ Water supply: Direct mains water
- ✓ Broadband: None
- ✓ Mobile signal: Good

Arrange a viewing

Abigail Hall
Branch Manager
North West Auction

0191 7371 168
northwest@pattinson.co.uk

- ✓ Flexible viewing slots
- ✓ Accompanied viewings

Description

Being Sold via Secure Sale online bidding. Terms & Conditions apply. Starting Bid £100000

This mid-terrace property offers a fantastic opportunity for buyers looking to put their own stamp on a home. Situated in a convenient residential location, the property boasts attractive red brick frontage and strong kerb appeal, making it ideal for first-time buyers or investors alike.

Upon entering, you are welcomed into a bright and spacious living room, filled with natural light from large windows and featuring a charming fireplace as a focal point. The room provides a warm and inviting atmosphere, with plenty of scope to modernise and create a comfortable family space.

The kitchen offers a practical layout with ample storage and worktop space, complemented by traditional cabinetry and natural light. It presents an excellent opportunity to redesign into a modern and functional heart of the home.

Upstairs, the property features a generously sized main bedroom with built-in storage and plenty of natural light, alongside a second bedroom that offers a blank canvas for refurbishment—ideal as a guest room, nursery, or home office.

The bathroom includes a full-sized bath with overhead shower, wash basin, and WC, with a functional layout and great potential for updating to suit modern tastes.

Externally, the property benefits from a useful garage. This additional space provides excellent storage or workshop potential and could be adapted for a variety of uses.

Overall, this property offers great potential throughout and presents a fantastic opportunity to create a stylish and comfortable home in a well-connected location.

Council Tax Band: A

Tenure: Leasehold

Length of Lease: 858

Annual Ground Rent Amount: £2.00

Price: Starting Bid £100,000

Property Type: Terraced House

Parking: On Street

Year built: 1960

Construction materials: Brick and block

Roofing type: Slate tiles

Risk of floods and or erosion: No

Flooded in last 5 years: No

Flood defences: No

Planning permissions or proposals for development: No

Coalfield or mining area: No

Listed property: No

Conservation area: No

Public rights of way: No

Adaptions for accessibility: No

Restrictions: No

Required access: No

Heating: Gas

Electric: National Grid

Water: Direct mains water

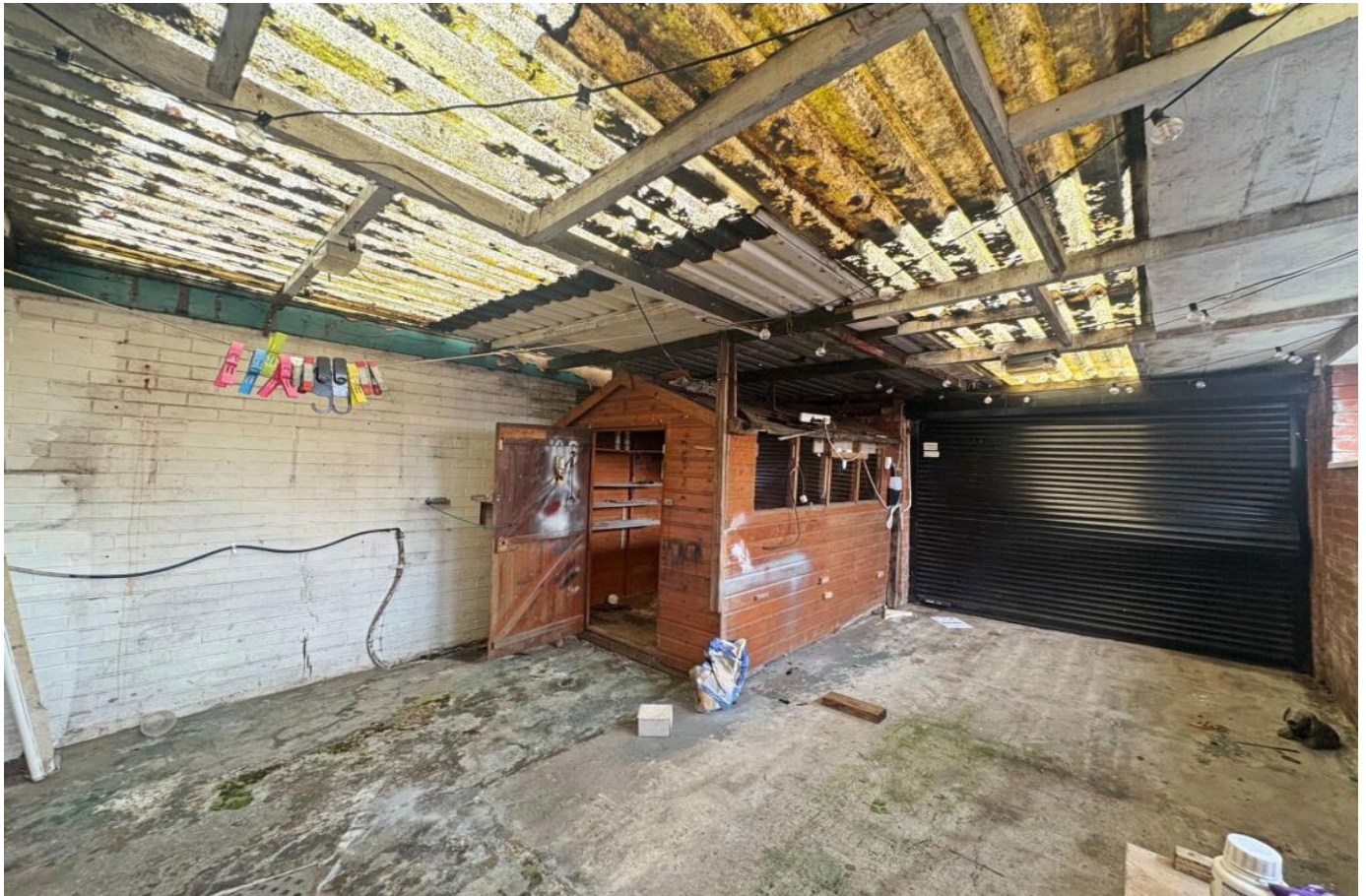
Water meter: No

Sewerage: Standard UK domestic

Air conditioning: No

Broadband: None

Mobile signal coverage: Good



Energy Efficiency Rating		
	Current	Potential
<i>Very energy efficient - lower running costs</i>		
(92-100) A		
(81-91) B		
(69-80) C	69	76
(55-68) D		
(39-54) E		
(21-38) F		
(1-20) G		
<i>Not energy efficient - higher running costs</i>		
England, Scotland & Wales	EU Directive 2002/91/EC	

Tonge Moor Road, Bolton, Greater Manchester, BL2 2JR

Contact your local branch today for more information on this property:

**Keith Pattinson Silverlink, Wallsend, Tyne and Wear, NE28 9NY, Tel: 0191 7371 168,
northwest@pattinson.co.uk, www.pattinson.co.uk**

These particulars, whilst believed to be accurate are set out as a general outline only for guidance and do not constitute any part of an offer or contract. Intending purchasers should not rely on them as statements of representation of fact, but must satisfy themselves by inspection or otherwise as to their accuracy. No person in this firm's employment has the authority to make or give any representation or warranty in respect of the property.

