



2 bed terraced house to buy in

Commercial Street, Heckmondwike, West Yorkshire, WF16 9JN

£65,000 Starting Bid

 x 2  x 1  x 1

Tenure

Freehold

On Street parking

Property features

- ✓ ***SOLD VIA SECURE SALE ONLINE BIDDING***
- ✓ *IMMEDIATE EXCHANGE OF CONTRACTS AVAILABLE*
- ✓ IDEAL INVESTMENT OPPORTUNITY
- ✓ MODERN KITCHEN & BATHROOM
- ✓ EPC Rating F

Key Information

- ✓ Council Tax: Band A
- ✓ EPC Rating: F
- ✓ Electric supply: National Grid
- ✓ Water supply: Direct mains water

Arrange a viewing

Jason Nicholson
Branch Manager
North Auction

0191 425 1510
north@pattinson.co.uk

- ✓ Flexible viewing slots
- ✓ Accompanied viewings

Description

***FOR SALE VIA SECURE ONLINE BIDDING WITH A START BID £65,000**

This well-presented one bedroom property with an additional occasional room is offered to the market with no onward chain. Ideal for investors seeking a strong addition to their portfolio or first-time buyers looking for a comfortable and modern home.

This property features a contemporary kitchen with integrated appliances and stylish cabinetry, as well as a sleek bathroom finished to a good standard.

The main bedroom provides ample space for relaxation, while the occasional room offers flexibility (perfect for a home office, nursery or guest accommodation). Neutral décor throughout enhances the sense of space and light, making the property ready to move into or let out immediately.

With its practical layout and modern finishes, this property presents a fantastic opportunity for those looking for a low-maintenance home or a smart investment. Early viewing is highly recommended to appreciate the quality and potential this property has to offer. For further details or to arrange a viewing, please contact our office.

Council Tax Band: A

Tenure: Freehold

Price: Starting Bid £65,000

Property Type: Terraced House

Parking: On Street

Flooded in last 5 years: No

Flood defences: No

Adaptions for accessibility: No

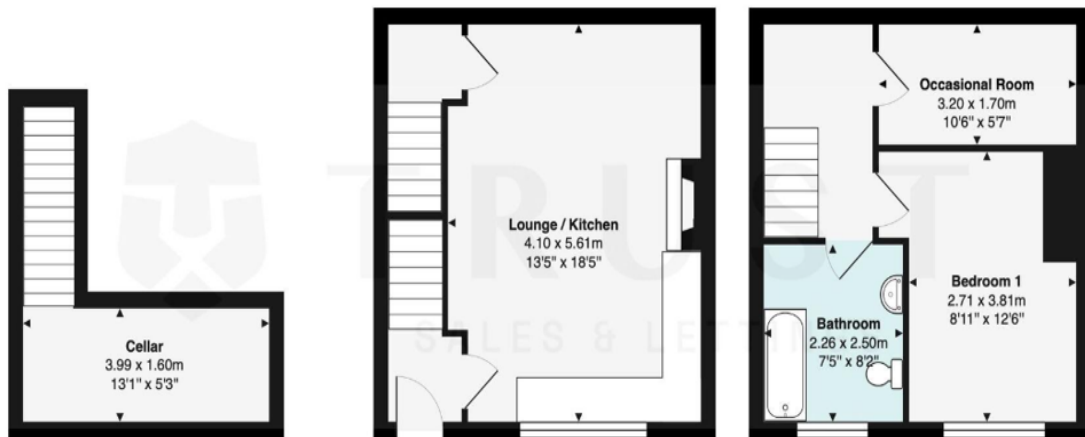
Restrictions: No

Required access: No

Electric: National Grid

Water: Direct mains water

Sewerage: Standard UK domestic



Commercial Street, Heckmondwike, WF16 9JN

Total Area: 65.5 m² ... 705 ft²

Whilst every attempt has been made to ensure the accuracy of the floor plan, measurements of doors, windows and rooms and any other items are approximate and no responsibility is taken for any error, omissions or mis-statement. The plan is for illustrative purposes only and should be used as such.

| Energy Efficiency Rating | | Current | Potential |
|--|--|-------------------------|-----------|
| <i>Very energy efficient - lower running costs</i> | | | |
| (92-100) A | | | |
| (81-91) B | | | 88 |
| (69-80) C | | | |
| (55-68) D | | | |
| (39-54) E | | | |
| (21-38) F | | 23 | |
| (1-20) G | | | |
| <i>Not energy efficient - higher running costs</i> | | | |
| England, Scotland & Wales | | EU Directive 2002/91/EC | |

Commercial Street, Heckmondwike, West Yorkshire, WF16 9JN

Contact your local branch today for more information on this property:

Mercantile House Silverlink, Wallsend, Tyne and Wear, NE28 9NY, Tel: 0191 425 1510, north@pattinson.co.uk, www.pattinson.co.uk

These particulars, whilst believed to be accurate are set out as a general outline only for guidance and do not constitute any part of an offer or contract. Intending purchasers should not rely on them as statements of representation of fact, but must satisfy themselves by inspection or otherwise as to their accuracy. No person in this firm's employment has the authority to make or give any representation or warranty in respect of the property.

