



2 bed lower flat to buy in SR6

Brandling Street, Sunderland, Tyne and Wear, SR6 0LN

£85,000

 x 2  x 1  x 1

Tenure

Leasehold

Property features

- ✓ Two Bedrooms
- ✓ No Onward Chain
- ✓ Ground Floor Flat
- ✓ Enclosed Yard
- ✓ EPC Rating D

On Street parking

Key Information

- ✓ Council Tax: Band A
- ✓ EPC Rating: D
- ✓ Heating supply: Gas

Arrange a viewing

Beth Curtis
Sales Negotiator
Sunderland

0191 5143929
sunderland@pattinson.co.uk

- ✓ Flexible viewing slots
- ✓ Accompanied viewings

Description

Pattinson Estate Agents is delighted to present to the market this two-bedroom flat located on Brandling Street, Sunderland. Situated in the popular St Peter's area of Roker, this property offers a fantastic opportunity for first-time buyers or investors looking to expand their portfolio in a high-demand rental area.

Property Highlights

Prime Coastal Location: Perfectly positioned within walking distance of the scenic Roker Seafront, offering easy access to local beaches, cafes, and restaurants.

Investment Potential: The area is known for exceptional rental demand, with similar properties in the street generating consistent interest from tenants.

Spacious Living: This period flat features approximately 564 sq ft of internal living space, including two well-proportioned bedrooms and a separate reception room.

Convenient Amenities: Ideally located close to Sea Road shopping centre, local reputable schools, and excellent public transport links to Sunderland City Centre.

Accommodation Briefly Comprises

Entrance: Private entrance with hallway leading to main living areas.

Lounge: A welcoming reception room featuring a neutral finish and ample natural light.

Kitchen: Fitted with a range of wall and base units and space for essential appliances.

Bedrooms: Two bedrooms, including a generous master and a flexible second bedroom.

Outdoor Space: Access to a private or shared rear yard, providing useful outdoor space.

Early viewing is essential to appreciate the potential and location of this property. To arrange your appointment, please contact the Pattinson Sunderland Branch

Council Tax Band: A

Tenure: Leasehold

Length of Lease: 970

Annual Ground Rent Amount: £15.00

Price: £85,000

Property Type: Lower Flat

Parking: On Street

Heating: Gas

External Front



Lounge

3.61m x 3.74m (11'10" x 12'3")



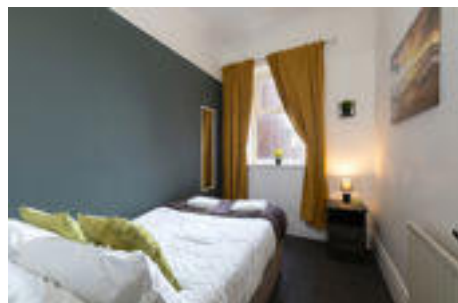
Bedroom 1

3.97m x 3.76m (13'0" x 12'4")



Bedroom 2

2.64m x 2.02m (8'7" x 6'7")



Kitchen

3.26m x 1.82m (10'8" x 5'11")

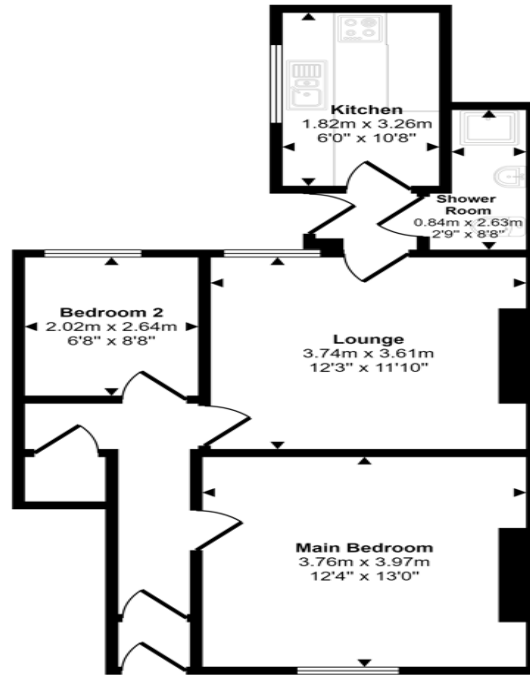


Shower Room

2.63m x 0.84m (8'7" x 2'9")



Approx Gross Internal Area
52 sq m / 564 sq ft



Floorplan

This floorplan is only for illustrative purposes and is not to scale. Measurements of rooms, doors, windows, and any items are approximate and no responsibility is taken for any error, omission or mis-statement. Icons of items such as bathroom suites are representations only and may not look like the real items. Made with Made Snappy 360.

Energy Efficiency Rating		Current	Potential
Very energy efficient - lower running costs			
(92-100) A			
(81-91) B			
(69-80) C			75
(55-68) D		60	
(39-54) E			
(21-38) F			
(1-20) G			
Not energy efficient - higher running costs			
England, Scotland & Wales		EU Directive 2002/91/EC	

Brandling Street, Sunderland, Tyne and Wear, SR6 0LN

Contact your local branch today for more information on this property:

**51 Fawcett Street, Sunderland, South Tyneside, Tyne & Wear, SR1 1RS, Tel: 0191 5143929,
sunderland@pattinson.co.uk, www.pattinson.co.uk**

These particulars, whilst believed to be accurate are set out as a general outline only for guidance and do not constitute any part of an offer or contract. Intending purchasers should not rely on them as statements of representation of fact, but must satisfy themselves by inspection or otherwise as to their accuracy. No person in this firm's employment has the authority to make or give any representation or warranty in respect of the property.

