



To buy

3 bed lodge to buy in NE19

Otterburn Hall, Otterburn, Newcastle upon Tyne, Northumberland, NE19 1HE

£120,000

 x3  x1  x1

Tenure

Leasehold

Driveway parking

Property features

- ✓ Three bedroom detached timber
- ✓ Open plan living with lounge, dining area and kitchen
- ✓ Private decking with hot tub
- ✓ Lovely woodland surroundings
- ✓ EPC Rating F

Key Information

- ✓ Council Tax: Band A
- ✓ EPC Rating: F
- ✓ Heating supply: Electric
- ✓ Electric supply: National Grid
- ✓ Water supply: Springs
- ✓ Broadband: ADSL copper wire
- ✓ Mobile signal: Good

Arrange a viewing

Richard Brough
Senior Valuer
Consett

01207 508262
consett@pattinson.co.uk

- ✓ Flexible viewing slots
- ✓ Accompanied viewings

Description

Lodge 5 is A spacious Timber Lodge in the Heart of Northumberland's National Park

Beautifully presented and generously proportioned with open plan living, this detached timber lodge enjoys a prime position within the sought-after Otterburn Lodge Estate. Nestled in the charming village of Otterburn—set amid the rolling hills and scenic landscapes of Northumberland National Park—the location offers both peaceful seclusion and convenient access to local amenities.

The lodge is perfectly framed by mature woodlands and features ample private parking. A few steps lead up to an elevated decked terrace, ideal for al fresco dining, relaxing with a good book, or unwinding in the inviting hot tub.

Inside, the lodge is finished to a good standard, offering a bright and spacious open-plan layout that includes a kitchen with a comprehensive range of fitted wall and base units and integrated appliances, as well as generous living and dining areas. An internal hallway leads to the well-appointed bedrooms and a stylish bathroom.

The park allows occupancy 12 months of a year (enquire further) restriction was removed. The lodge is currently being used as a holiday let however will suit a variety of buyers. Offered fully furnished for a ready-to-go holiday rental.

This lodge makes this an ideal retreat for couples, families or lucrative holiday-let for investors.

Council Tax Band: A

Tenure: Leasehold

Length of Lease: 988

Annual Ground Rent Amount: £2,270.00

Annual Service Charge Amount: £3,900.00

Price: £120,000

Property Type: Lodge

Parking: Driveway

Year built: 1985

Construction materials: Timber frame

Roofing type: Clay tiles

Risk of floods and or erosion: No

Flooded in last 5 years: No

Source of flood: Lake

Flood defences: No

Planning permissions or proposals for development: No

Coalfield or mining area: No

Listed property: No

Conservation area: No

Public rights of way: Yes

Adaptions for accessibility: No

Restrictions: Yes

Required access: Yes

Heating: Electric

Electric: National Grid

Water: Springs

Water meter: No

Sewerage: Septic Tank

Air conditioning: No

Broadband: ADSL copper wire

Mobile signal coverage: Good

Entrance porch

Double glazed entrance door and window, courtesy light, laminate flooring,

Dining Area

Double glazed rear aspect window, Vaulted ceilings, laminate flooring, open plan into lounge area and kitchen.



Lounge

Double glazed front and side aspect windows, vaulted ceiling, double glazed door leading onto the private decking area. carpeted flooring, electric radiator.



Kitchen

Fitted wall and base units incorporating counter work tops with a single drainer sink unit, built in electric oven and hob, integral fridge and freezer, free standing washing machine, generous built in storage units, double glazed rear aspect window.



Bedroom Three

2.30m x 2.10m (7'6" x 6'10")

Double glazed front aspect window, fitted wardrobes, electric wall heater, carpeted flooring.



Inner hallway

Access to loft space, laminate flooring, power point.

Bedroom One

3.50m x 2.90m (11'5" x 9'6")

Double glazed windows, fitted wardrobes, electric radiator, carpeted flooring.



Bedroom Two

2.90m x 2.90m (9'6" x 9'6")

Double glazed front aspect window, fitted wardrobes, electric radiator, carpeting flooring.



Bathroom

White three piece suite comprising panelled bath with shower over, pedestal wash hand basin, low level w.c. heated towel rail, double glazed front aspect window. vinyl flooring.



Decking

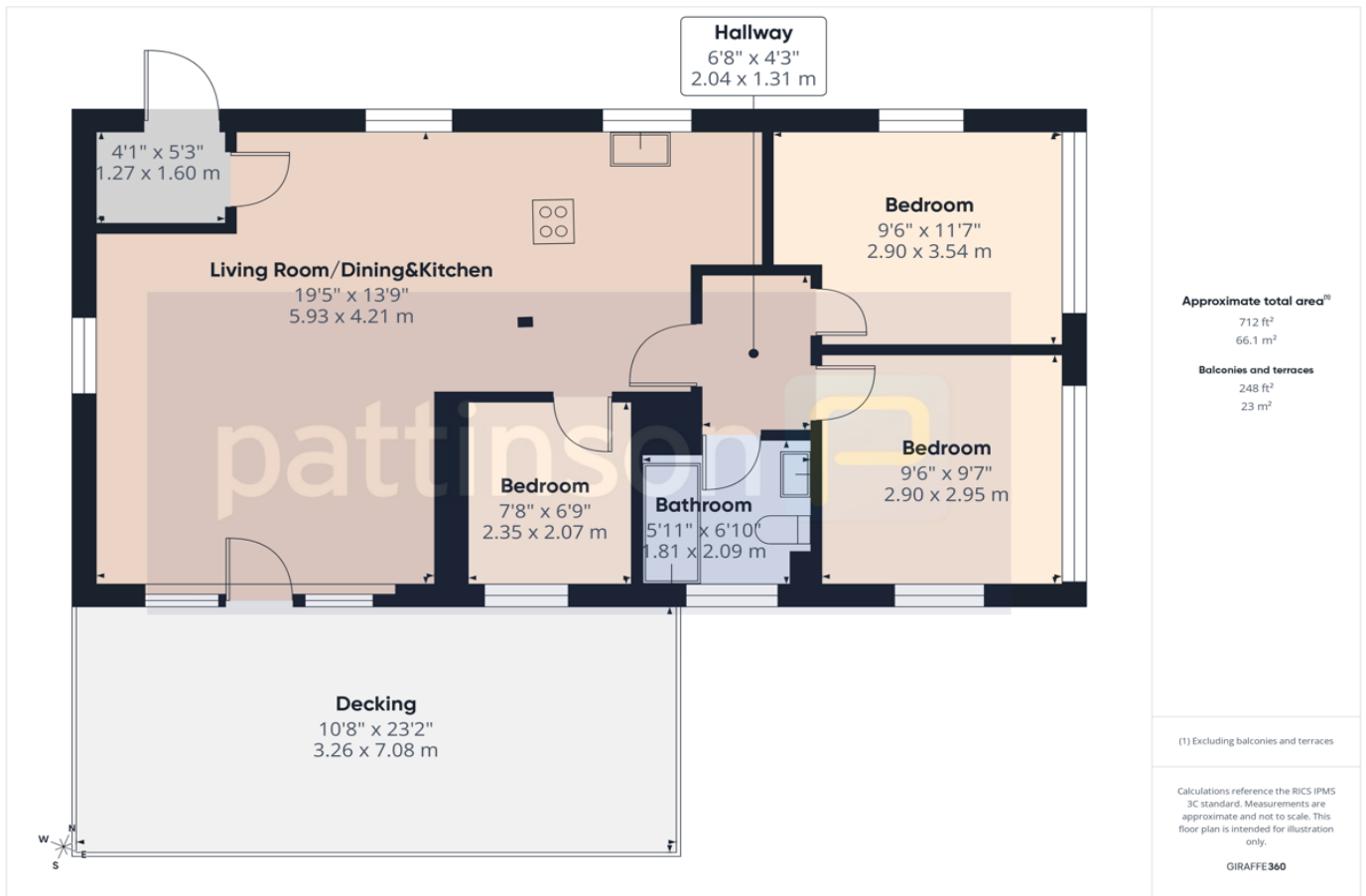
Decking patio area with artificial grass, hot tub, lights, cold water tap and gate access.



Front garden

Gravelled area with off road parking for two vehicles.





Energy Efficiency Rating		
	Current	Potential
<i>Very energy efficient - lower running costs</i>		
(92-100) A		
(81-91) B		
(69-80) C		77
(55-68) D		
(39-54) E		
(21-38) F	27	
(1-20) G		
<i>Not energy efficient - higher running costs</i>		
England, Scotland & Wales		EU Directive 2002/91/EC

Otterburn Hall, Otterburn, Newcastle upon Tyne, Northumberland, NE19 1HE

Contact your local branch today for more information on this property:

55 Medomsley Road, Consett, County Durham, Tyne & Wear, DH8 5HQ, Tel: 01207 508262, Fax: 01207 583771, consett@pattinson.co.uk, www.pattinson.co.uk

These particulars, whilst believed to be accurate are set out as a general outline only for guidance and do not constitute any part of an offer or contract. Intending purchasers should not rely on them as statements of representation of fact, but must satisfy themselves by inspection or otherwise as to their accuracy. No person in this firm's employment has the authority to make or give any representation or warranty in respect of the property.

