



3 bed semi-detached house to buy in SR7

Shinwell Terrace, Murton, Seaham, Durham, SR7 9EP

£139,950

 x3  x1  x1

Tenure

Freehold

Property features

- ✓ No Onward Chain
- ✓ Three Generous Double Bedrooms
- ✓ Rare Larger-Than-Average End Plot
- ✓ Excellent Extension Potential
- ✓ EPC Rating C

Driveway parking

Garden

Key Information

- ✓ Council Tax: Band A
- ✓ EPC Rating: C
- ✓ Heating supply: Gas
- ✓ Electric supply: National Grid
- ✓ Water supply: Direct mains water

Arrange a viewing

Claire Nasir
Senior Manager
Peterlee

0191 5183521
peterlee@pattinson.co.uk

- ✓ Flexible viewing slots
- ✓ Accompanied viewings

Description

Exceptional Three-Bedroom Semi-Detached Home on a Rare, Generous End Plot – No Onward Chain

Offered to the market with no onward chain, this beautifully presented three-bedroom semi-detached home occupies an impressive larger-than-average end plot in the popular village of Murton, Seaham. Boasting substantial outdoor space, ample off-street parking, and outstanding potential to extend (subject to the necessary planning consents), this is a rare opportunity for buyers seeking both generous living space and future possibilities.

The property has been tastefully updated by the current owners and benefits from a modern fitted kitchen, a stylish contemporary family bathroom, and the added convenience of a ground floor WC, making it perfectly suited to modern family living.

The bright and spacious ground floor features a welcoming lounge with ample room for both relaxing and dining, while the upgraded kitchen offers excellent storage and worktop space, ideal for everyday family life and entertaining. A practical downstairs WC completes the accommodation.

To the first floor are three generous double bedrooms, a feature rarely found in homes of this style, providing flexible accommodation for growing families, guests or those working from home. The modern family bathroom is finished with contemporary fixtures and fittings.

Externally, this property truly stands out. Occupying a substantial end plot, it benefits from well-maintained front and rear gardens, together with an exceptionally generous side garden offering exciting scope for extension or further development, subject to the necessary planning permissions. The property also provides ample off-street parking for multiple vehicles.

Ideally situated close to local shops, schools, public transport links and excellent road networks, the property combines peaceful village living with convenient access to nearby amenities.

Homes offering three double bedrooms, a large end plot, ample parking, and excellent development potential are rarely available. Early viewing is highly recommended to fully appreciate everything this outstanding home has to offer.

To arrange your viewing or for further information, please contact Pattinson Estate Agents.

Council Tax Band: A

Tenure: Freehold

Price: £139,950

Property Type: Semi-detached house

USPs: Garden, Has land, Chain free

Parking: Driveway

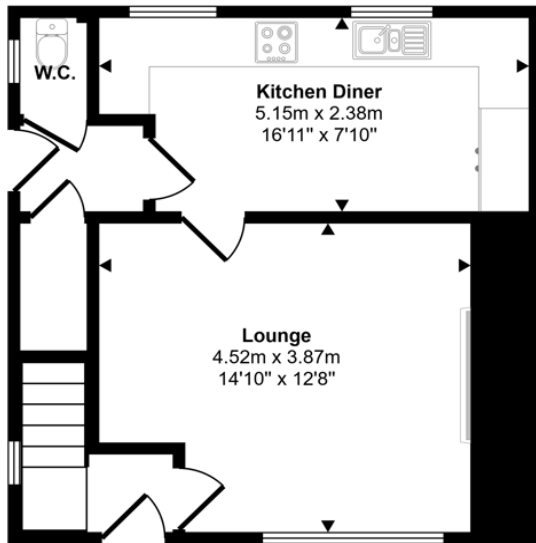
Heating: Gas

Electric: National Grid

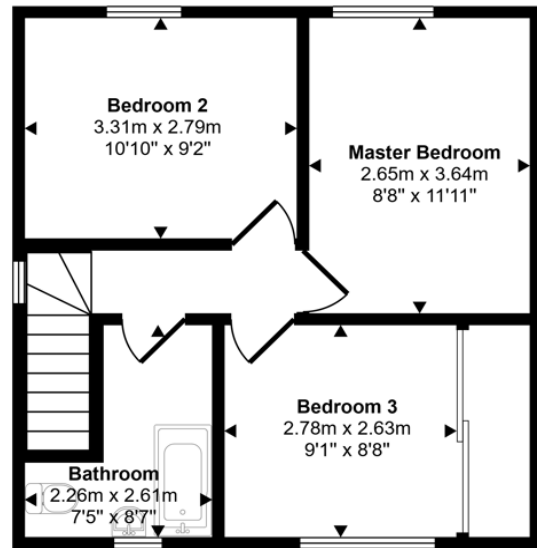
Water: Direct mains water

Sewerage: Standard UK domestic

Approx Gross Internal Area
78 sq m / 836 sq ft



Ground Floor
Approx 39 sq m / 416 sq ft



First Floor
Approx 39 sq m / 420 sq ft

This floorplan is only for illustrative purposes and is not to scale. Measurements of rooms, doors, windows, and any items are approximate and no responsibility is taken for any error, omission or mis-statement. Icons of items such as bathroom suites are representations only and may not look like the real items. Made with Made Snappy 360.

Energy Efficiency Rating		
	Current	Potential
<i>Very energy efficient - lower running costs</i>		
(92-100) A		
(81-91) B		85
(69-80) C	70	
(55-68) D		
(39-54) E		
(21-38) F		
(1-20) G		
<i>Not energy efficient - higher running costs</i>		
England, Scotland & Wales	EU Directive 2002/91/EC	

Shinwell Terrace, Murton, Seaham, Durham, SR7 9EP

Contact your local branch today for more information on this property:

2 Yoden Way, Peterlee, County Durham, SR8 1BP, Tel: 0191 5183521, peterlee@pattinson.co.uk, www.pattinson.co.uk

These particulars, whilst believed to be accurate are set out as a general outline only for guidance and do not constitute any part of an offer or contract. Intending purchasers should not rely on them as statements of representation of fact, but must satisfy themselves by inspection or otherwise as to their accuracy. No person in this firm's employment has the authority to make or give any representation or warranty in respect of the property.

