



3 bed terraced house to buy in

Siskin Meadow, Cold Hesledon, Seaham, Durham, SR7 8FJ

£185,000 Starting Bid

 x3  x1  x1

Tenure

Freehold

Property features

- ✓ Three Bedrooms Terraced
- ✓ Downstairs W/C
- ✓ Bedroom One With En-Suite
- ✓ Solar Panels
- ✓ EPC Rating B

Driveway parking

Garden

Key Information

- ✓ Council Tax: Band B
- ✓ EPC Rating: B
- ✓ Heating supply: Gas

Arrange a viewing

Claire Nasir
Senior Manager
Peterlee

0191 5183521
peterlee@pattinson.co.uk

- ✓ Flexible viewing slots
- ✓ Accompanied viewings

Description

Move in 4-8 weeks!

Pattinson Estate Agents welcome for sale this three-bedroom terraced property situated on Siskin Meadow, Cold Hesledon, SR7 8FJ.

WALK THROUGH VIDEO TOUR AVAILABLE

The property briefly comprises : porch, living room, kitchen/dining area and a downstairs w/c are located on the ground floor. Three bedrooms, bedroom one with en-suite and a family bathroom are located on the first floor.

Externally the property offers paved driveway with a electric car charging point to the front elevation, Fully enclosed, well presented and low maintenance garden to the rear elevation.

With its desirable location, overall condition, and attractive features, this property is an excellent choice for those seeking a comfortable and well-equipped home. Don't miss the opportunity to make this property your own. For any further information or to book your internal viewing please call Pattinson.

Council Tax Band: B

Tenure: Freehold

Price: Starting Bid £185,000

Property Type: Terraced House

USPs: Garden

Parking: Driveway

Heating: Gas

External Front

Paved driveway with a electric car charging point to the front elevation.



Porch

Access via composite door, radiator and carpet.



Living Room

Double glazed window to the front elevation, tv point, radiator and carpet.



Kitchen/ Dining Area

Double glazed window to the rear elevation, range of wall and base units with work surfaces, sink and drainer unit, electric hob, oven, integrated washing machine, dishwasher, fridge, freezer radiator, vinyl flooring and patio door leading to the garden.



Utility/ W/C

Two piece suite comprising; low level w/c, wash basin with stainless steel mixer tap, range of base units with work surfaces, radiator and vinyl flooring.



Landing

Access to the loft, radiator and carpet.



Bedroom 1

Double glazed window to the front elevation, radiator and carpet.



En-Suite

Double glazed window to the front elevation, three piece suite comprising; low level w/c, wash basin with stainless steel mixer tap, walk in shower, radiator, partly tiles walls and vinyl flooring.



Bedroom 2

Double glazed window to the rear elevation, radiator and carpet.



Bedroom 3

Double glazed window to the rear elevation, radiator and carpet.



Bathroom

Three piece suite comprising; low level w/c, wash basin with stainless steel mixer tap, bath with stainless steel mixer tap, radiator, partly tiled walls and vinyl flooring.

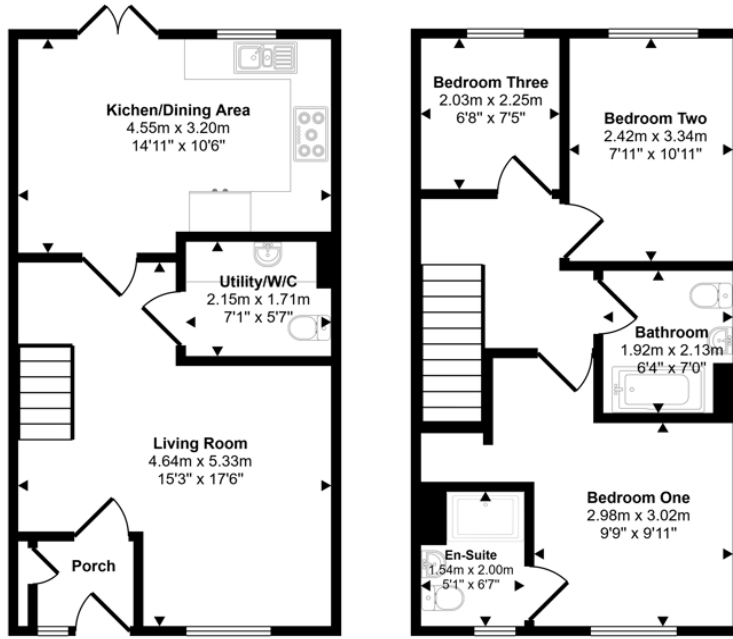


External Rear

Fully enclosed, well presented and low maintenance garden to the rear elevation.



Approx Gross Internal Area
81 sq m / 870 sq ft



This floorplan is only for illustrative purposes and is not to scale. Measurements of rooms, doors, windows, and any items are approximate and no responsibility is taken for any error, omission or mis-statement. Icons of items such as bathroom suites are representations only and may not look like the real items. Made with Made Snappy 360.

Energy Efficiency Rating		
	Current	Potential
<i>Very energy efficient - lower running costs</i>		
(92-100) A		
(81-91) B	91	91
(69-80) C		
(55-68) D		
(39-54) E		
(21-38) F		
(1-20) G		
<i>Not energy efficient - higher running costs</i>		
England, Scotland & Wales	EU Directive 2002/91/EC	

Siskin Meadow, Cold Hesledon, Seaham, Durham, SR7 8FJ

Contact your local branch today for more information on this property:

2 Yoden Way, Peterlee, County Durham, SR8 1BP, Tel: 0191 5183521, peterlee@pattinson.co.uk, www.pattinson.co.uk

These particulars, whilst believed to be accurate are set out as a general outline only for guidance and do not constitute any part of an offer or contract. Intending purchasers should not rely on them as statements of representation of fact, but must satisfy themselves by inspection or otherwise as to their accuracy. No person in this firm's employment has the authority to make or give any representation or warranty in respect of the property.

