



## 2 bed semi-detached house to buy in NE40

Jasper Avenue, Greenside, Ryton, Tyne and Wear, NE40 4RS

# £125,000

 x2  x1  x1

Tenure

**Freehold**

## Property features

- ✓ Two bedrooms
- ✓ Semi-detached house
- ✓ Situated in Greenside
- ✓ Garden to rear
- ✓ EPC Rating E

On Street parking

## Key Information

- ✓ Council Tax: Band A
- ✓ EPC Rating: E
- ✓ Heating supply: Gas

## Arrange a viewing

Lyndsay Greenwell  
Senior Manager  
Whickham

0191 477 5116  
whickham@pattinson.co.uk

- ✓ Flexible viewing slots
- ✓ Accompanied viewings

## Description

We are excited to present this charming two-bedroom semi-detached house located in the sought-after area of Greenside. This property is conveniently situated near local amenities and boasts excellent transport links, making it an ideal choice for commuters and families alike.

As you enter, you are welcomed by an inviting entrance porch that leads into a well-appointed hallway. The spacious lounge offers a comfortable setting for relaxation, while the kitchen diner provides a perfect space for family meals and entertaining guests.

The ground floor also features a modern shower room for your convenience. Upstairs, you'll find the master bedroom, which is generously sized and filled with natural light, along with a separate W/C and an additional cosy second bedroom.

The property is complemented by an easy-maintenance rear garden, perfect for enjoying outdoor activities or simply unwinding in the fresh air. In summary, this home beautifully combines comfort, convenience, and potential for a fantastic lifestyle.

Council Tax Band: A

Tenure: Freehold

Price: £125,000

Property Type: Semi-detached house

Parking: On Street

Heating: Gas

## Entrance porch



## Hall

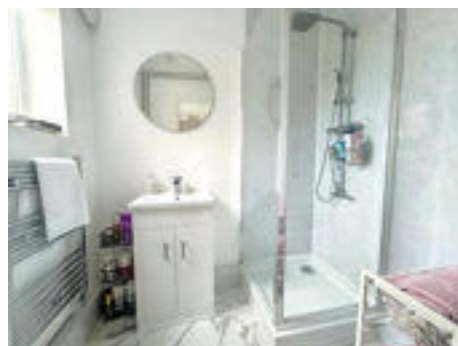
## Lounge



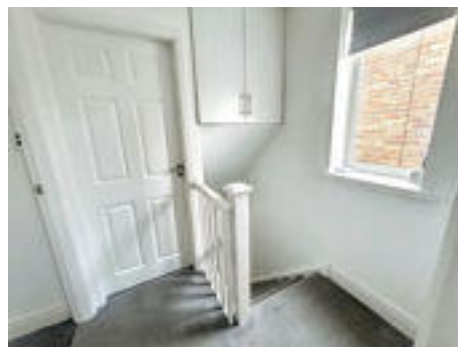
## Kitchen/diner



## Shower room



## Landing



## Master bedroom



---

## W/C



---

## Bedroom two

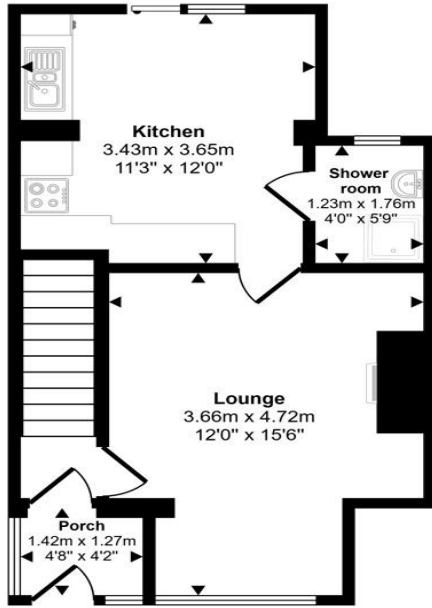


---

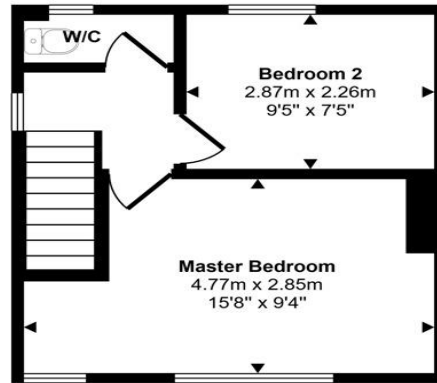
## Rear garden



Approx Gross Internal Area  
61 sq m / 655 sq ft



**Ground Floor**  
Approx 36 sq m / 386 sq ft



**First Floor**  
Approx 25 sq m / 269 sq ft

This floorplan is only for illustrative purposes and is not to scale. Measurements of rooms, doors, windows, and any items are approximate and no responsibility is taken for any error, omission or mis-statement. Icons of items such as bathroom suites are representations only and may not look like the real items. Made with Made Snappy 360.

Energy Efficiency Rating		Current	Potential
<i>Very energy efficient - lower running costs</i>			
(92-100) <b>A</b>			
(81-91) <b>B</b>			
(69-80) <b>C</b>			72
(55-68) <b>D</b>			
(39-54) <b>E</b>		50	
(21-38) <b>F</b>			
(1-20) <b>G</b>			
<i>Not energy efficient - higher running costs</i>			
<b>England, Scotland &amp; Wales</b>		EU Directive 2002/91/EC	

Jasper Avenue, Greenside, Ryton, Tyne and Wear, NE40 4RS

Contact your local branch today for more information on this property:

**4 Fellside Road, Whickham, Newcastle Upon Tyne, Tyne & Wear, NE16 4JU, Tel: 0191 477 5116, whickham@pattinson.co.uk, www.pattinson.co.uk**

These particulars, whilst believed to be accurate are set out as a general outline only for guidance and do not constitute any part of an offer or contract. Intending purchasers should not rely on them as statements of representation of fact, but must satisfy themselves by inspection or otherwise as to their accuracy. No person in this firm's employment has the authority to make or give any representation or warranty in respect of the property.

