



3 bed detached house to buy in

The Grove, Rainton Bridge, Houghton Le Spring, Tyne and Wear, DH5 8NT

£300,000

 x 3  x 2  x 2

Tenure

Freehold

Double Garage parking

Garden

Property features

- ✓ 3 bedroom (Originally 4 Bed) family home
- ✓ Highly desirable area
- ✓ Very rare to market
- ✓ No upward Chain
- ✓ EPC Rating C

Key Information

- ✓ Council Tax: Band E
- ✓ EPC Rating: C
- ✓ Heating supply: Gas
- ✓ Electric supply: National Grid
- ✓ Water supply: Direct mains water
- ✓ Broadband: ADSL copper wire
- ✓ Mobile signal: Good

Arrange a viewing

Susan Davison
Branch Manager
Houghton

0191 5120933
houghton@pattinson.co.uk

- ✓ Flexible viewing slots
- ✓ Accompanied viewings

Description

Pattinson Estate Agents are delighted to present to the market this exceptional three-bedroom detached family home, nestled within the highly sought-after and private community of Rainton Bridge, Houghton Le Spring. Occupying a generous and enviable plot, this property offers an outstanding opportunity for buyers seeking space, privacy, and convenience in a prestigious location.

Location Benefits

Perfectly positioned, this family home provides effortless access to local amenities, a range of shopping options, and highly regarded educational facilities. The property also enjoys superb connectivity to Houghton town centre, as well as Durham and Sunderland city centres, via excellent road and public transport links.

Accommodation Details

- Ground Floor:
- Welcoming entrance hallway
- Spacious living room with connecting dining area
- Modern, well-appointed kitchen
- Convenient downstairs W/C

First Floor:

Open landing area

Three generously sized bedrooms

Family bathroom

Master bedroom featuring a dedicated dressing and storage area, created by combining the original bedrooms one and four for enhanced space and versatility

External Features

This property stands out with its meticulously maintained sweeping gardens to the front, side, and rear – offering an idyllic setting for relaxation, entertaining, or family enjoyment. Additional benefits include a double driveway and a double garage, accessible from both the driveway and the rear of the property, adjoining a convenient cloak area.

Key Highlights

- Rare opportunity to own a home on a generous plot within this exclusive community
- Excellent scope to personalise and add your own style
- Ideal family environment with ample outdoor space
- Superb transport links and proximity to amenities

Viewing Arrangements

Early viewing is strongly recommended to fully appreciate the size, setting, and potential of this remarkable home. Please contact our Houghton team at Pattinson Estate Agents for further details and to arrange your visit.

Council Tax Band: E

Tenure: Freehold

Price: £300,000

Property Type: Detached House

USPs: Garden

Parking: Double Garage, Driveway

Heating: Gas

Electric: National Grid

Water: Direct mains water

Water meter: Yes

Sewerage: Standard UK domestic

Air conditioning: No

Broadband: ADSL copper wire

Mobile signal coverage: Good

Living Room



Dining Room



Kitchen



Cloak



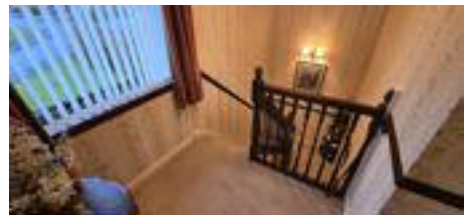
Double garage



Hallway



Landing



Bedroom 1



Bedroom 2



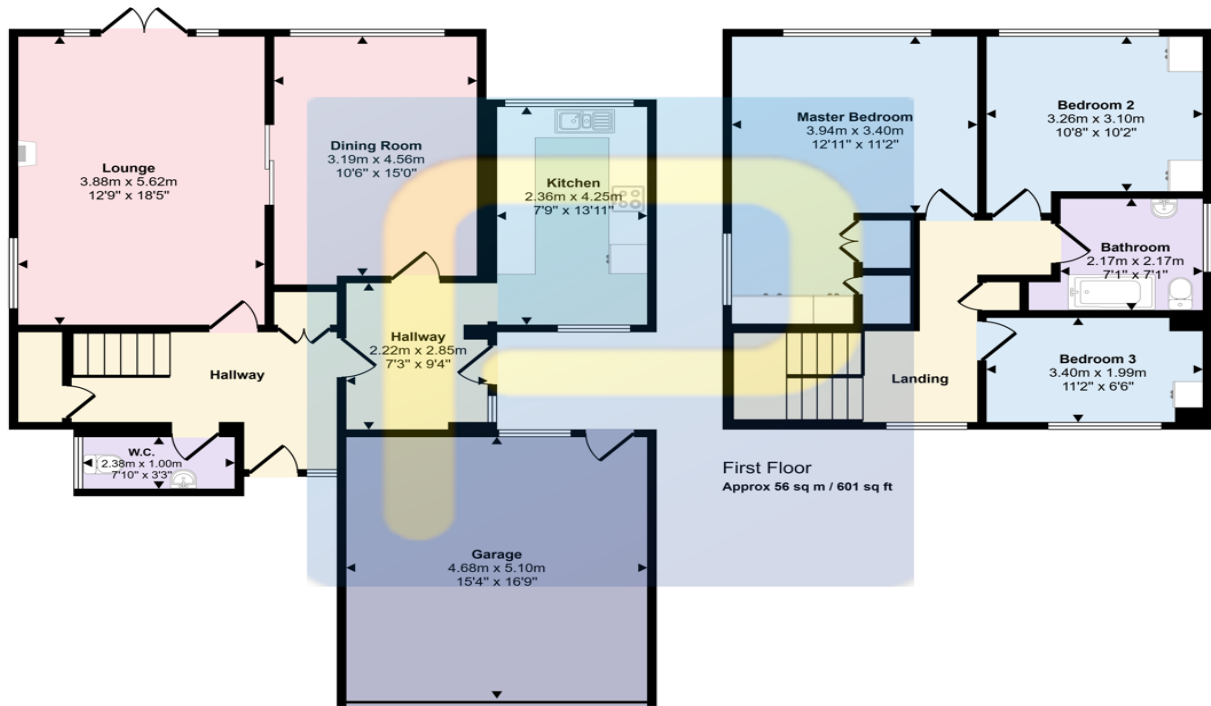
Bedroom 3



Bathroom



Approx Gross Internal Area
151 sq m / 1621 sq ft



Ground Floor
Approx 95 sq m / 1021 sq ft

This floorplan is only for illustrative purposes and is not to scale. Measurements of rooms, doors, windows, and any items are approximate and no responsibility is taken for any error, omission or mis-statement. Icons of items such as bathroom suites are representations only and may not look like the real items. Made with Made Snappy 360.

Energy Efficiency Rating		
	Current	Potential
<i>Very energy efficient - lower running costs</i>		
(92-100) A		
(81-91) B		
(69-80) C	72	78
(55-68) D		
(39-54) E		
(21-38) F		
(1-20) G		
<i>Not energy efficient - higher running costs</i>		
England, Scotland & Wales	EU Directive 2002/91/EC	

The Grove, Rainton Bridge, Houghton Le Spring, Tyne and Wear, DH5 8NT

Contact your local branch today for more information on this property:

14a Newbottle Street, Houghton Le Spring, Tyne and Wear, Tyne & Wear, DH4 4AB, Tel: 0191 5120933, houghton@pattinson.co.uk, www.pattinson.co.uk

These particulars, whilst believed to be accurate are set out as a general outline only for guidance and do not constitute any part of an offer or contract. Intending purchasers should not rely on them as statements of representation of fact, but must satisfy themselves by inspection or otherwise as to their accuracy. No person in this firm's employment has the authority to make or give any representation or warranty in respect of the property.

