



To buy

2 bed terraced house to buy in

Bakery Drive, Stockton, Stockton-on-Tees,
Durham, TS19 0SN

£125,000

 x2  x1  x1

Tenure

Freehold

Driveway & Garage parking

Property features

- ✓ Recently Refurbished
- ✓ No Forward Chain
- ✓ Garage and Driveway
- ✓ Enclosed Rear Garden
- ✓ EPC Rating C

Key Information

- ✓ Council Tax: Band B
- ✓ EPC Rating: C
- ✓ Heating supply: Gas

Arrange a viewing

Melanie Devine
Branch Manager
Stockton On Tees

01642 210132
stockton@pattinson.co.uk

- ✓ Flexible viewing slots
- ✓ Accompanied viewings

Description

This recently refurbished two-bedroom terraced property, situated on Bakery Drive in Stockton-on-Tees, offers an excellent opportunity for first-time buyers, investors, or those looking to downsize. Finished to a fresh and modern standard, the home has been newly decorated throughout and benefits from brand new carpets, creating a clean and inviting living space ready to move straight into.

The accommodation briefly comprises a bright and welcoming lounge, a kitchen, two comfortable bedrooms, and a family bathroom. The neutral décor throughout provides a versatile backdrop to suit a range of tastes and styles.

Externally, the property benefits from a garden area, ideal for relaxing or entertaining.

Conveniently located close to local amenities, schools, and transport links, the property offers easy access to Stockton town centre and surrounding areas.

Offered to the market with no forward chain, this is a fantastic opportunity for a straightforward and hassle-free purchase. Early viewing is highly recommended.

Council Tax Band: B

Tenure: Freehold

Price: £125,000

Property Type: Terraced House

Parking: Driveway & Garage

Heating: Gas

Entrance



Lounge

3.61m x 3.42m (11'10" x 11'2")



Kitchen

3.49m x 2.27m (11'5" x 7'5")



Stairs to First Floor

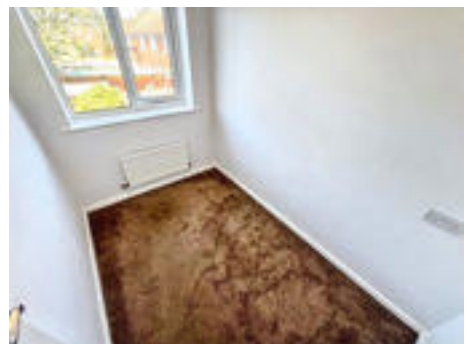
Bedroom One

3.52m x 2.39m (11'6" x 7'10")



Bedroom Two

2.48m x 1.59m (8'1" x 5'2")



Bathroom W/C

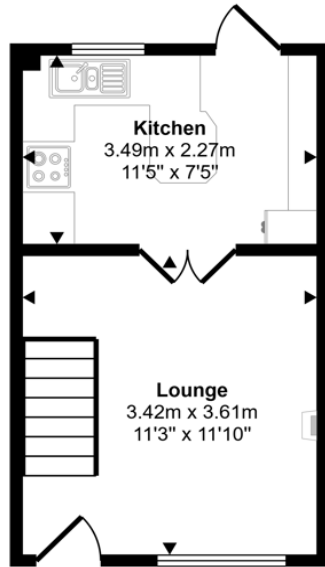
1.72m x 1.45m (5'7" x 4'9")



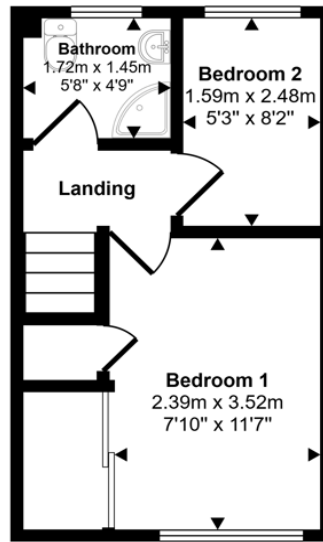
External



Approx Gross Internal Area
42 sq m / 454 sq ft



Ground Floor
Approx 21 sq m / 224 sq ft



First Floor
Approx 21 sq m / 230 sq ft

This floorplan is only for illustrative purposes and is not to scale. Measurements of rooms, doors, windows, and any items are approximate and no responsibility is taken for any error, omission or mis-statement. Icons of items such as bathroom suites are representations only and may not look like the real items. Made with Made Snappy 360.

Energy Efficiency Rating		Current	Potential
<i>Very energy efficient - lower running costs</i>			
(92-100) A			
(81-91) B			
(69-80) C		69	76
(55-68) D			
(39-54) E			
(21-38) F			
(1-20) G			
<i>Not energy efficient - higher running costs</i>			
England, Scotland & Wales		EU Directive 2002/91/EC	

Bakery Drive, Stockton, Stockton-on-Tees, Durham, TS19 0SN

Contact your local branch today for more information on this property:

20 Bishop Street, Stockton, Cleveland, TS18 1SY, Tel: 01642 210132, stockton@pattinson.co.uk, www.pattinson.co.uk

These particulars, whilst believed to be accurate are set out as a general outline only for guidance and do not constitute any part of an offer or contract. Intending purchasers should not rely on them as statements of representation of fact, but must satisfy themselves by inspection or otherwise as to their accuracy. No person in this firm's employment has the authority to make or give any representation or warranty in respect of the property.

