



2 bed semi-detached house to buy in TS20

Imperial Crescent, Norton,
Stockton-on-Tees, Durham, TS20 2ER

£127,950

 x2  x1  x1

Tenure

Freehold

Off Street parking

Property features

- ✓ NO ONWARD CHAIN
- ✓ OPEN PLAN LIVING
- ✓ MODERN KITCHEN
- ✓ TWO BEDROOMS
- ✓ HARD STANDING

Key Information

- ✓ Council Tax: Band A
- ✓ Heating supply: Gas
- ✓ Electric supply: National Grid
- ✓ Water supply: Direct mains water

Arrange a viewing

Charlotte Kitching
Branch Manager
Norton

01642 363345
norton@pattinson.co.uk

- ✓ Flexible viewing slots
- ✓ Accompanied viewings

Description

Positioned within a popular residential area of Norton, this deceptively spacious and extended home offers flexible accommodation that is sure to appeal to a wide range of buyers, from first time purchasers through to growing families looking for additional living space.

Set behind a low maintenance frontage with generous hard standing to the side providing off street parking, the accommodation begins with an entrance hall leading into a bright bay fronted lounge which flows seamlessly into the dining area, creating an ideal open plan living and entertaining space. The dining area also benefits from a useful understairs storage cupboard. To the rear, the property has been thoughtfully extended to provide a modern fitted kitchen with ample workspace and direct access out to the garden.

To the first floor, the impressive primary bedroom spans the full width of the property and offers excellent potential to be reconfigured into two separate rooms if required. A further well proportioned bedroom sits to the rear, while a useful lobby area gives access to the bathroom and includes a drop down ladder leading to a highly practical loft space complete with Velux window. The generous bathroom is fitted with a three piece suite alongside a separate shower cubicle.

Further benefits include UPVC double glazing and gas central heating via a combination boiler. Externally, access from both the front and kitchen leads onto the side and through to the enclosed wedge shaped rear garden.

Offered for sale with the advantage of No Onward Chain, early viewing is strongly recommended. Contact our Norton Team today to arrange your appointment.

Council Tax Band: A

Tenure: Freehold

Price: £127,950

Property Type: Semi-detached house

Parking: Off Street

Heating: Gas

Electric: National Grid

Water: Direct mains water

Sewerage: Standard UK domestic

Air conditioning: No

Accommodation

Living Room

3.67m x 3.60m (12'0" x 11'9")



Dining Room

4.89m x 3.32m (16'0" x 10'10")



Kitchen

4.09m x 2.72m (13'5" x 8'11")



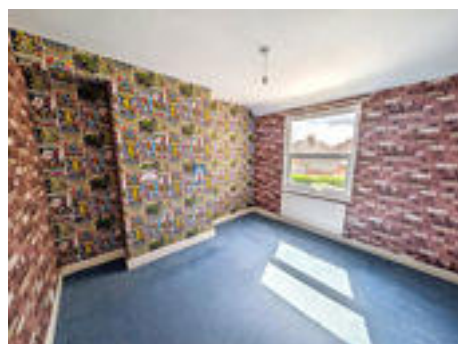
Bedroom 1

4.89m x 3.68m (16'0" x 12'0")



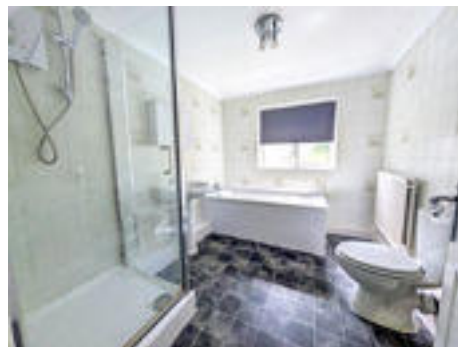
Bedroom 2

3.34m x 3.27m (10'11" x 10'8")



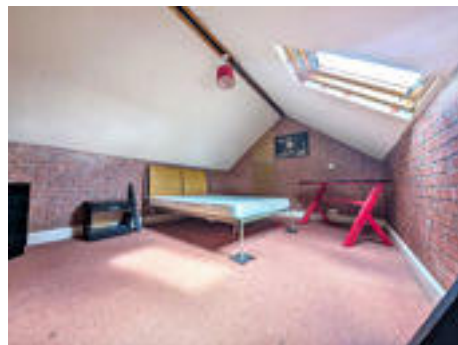
Bathroom

2.67m x 2.36m (8'9" x 7'8")



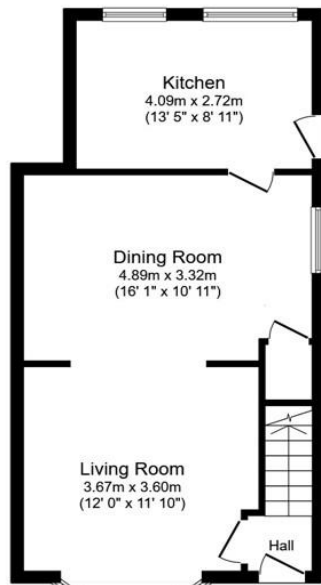
Loft

4.30m x 3.24m (14'1" x 10'7")

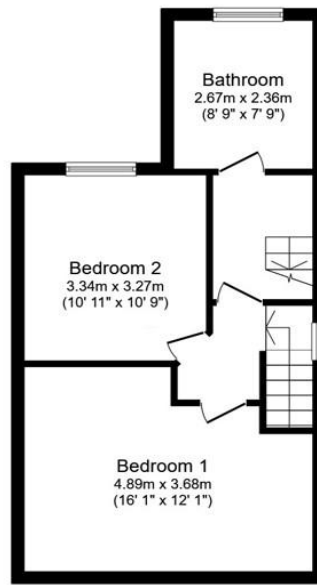


Rear Garden

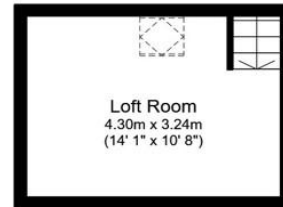




Ground Floor



First Floor



Second Floor

Total floor area: 102.2 sq.m. (1,100 sq.ft.)

This floor plan is for illustrative purposes only. It is not drawn to scale. Any measurements, floor areas (including any total floor area), openings and orientations are approximate. No details are guaranteed, they cannot be relied upon for any purpose and do not form any part of any agreement. No liability is taken for any error, omission or misstatement. A party must rely upon its own inspection(s). Powered by www.Propertybox.io

Imperial Crescent, Norton, Stockton-on-Tees, Durham, TS20 2ER

Contact your local branch today for more information on this property:

**4a High Street, Norton, Stockton-on-Tees, Durham, TS20 1DN, Tel: 01642 363345,
norton@pattinson.co.uk, www.pattinson.co.uk**

These particulars, whilst believed to be accurate are set out as a general outline only for guidance and do not constitute any part of an offer or contract. Intending purchasers should not rely on them as statements of representation of fact, but must satisfy themselves by inspection or otherwise as to their accuracy. No person in this firm's employment has the authority to make or give any representation or warranty in respect of the property.

