



3 bed terraced house to buy in

The Croft, Bellingham, Hexham,
Northumberland, NE48 2JY

£200,000 Offers Over

🏠 x3 🚗 x1 🚲 x2

Tenure

Freehold

Off Street parking

Property features

- ✓ Council Tax Band B
- ✓ EPC D
- ✓ Semi-rural location
- ✓ Period Features Throughout
- ✓ EPC Rating D

Key Information

- ✓ Council Tax: Band B
- ✓ EPC Rating: D
- ✓ Heating supply: Solid Fuel

Arrange a viewing

Lucy Sage
Branch Manager
Hexham

01434 605376
hexham@pattinson.co.uk

- ✓ Flexible viewing slots
- ✓ Accompanied viewings

Description

Offer with NO ONWARD CHAIN, Pattinson are delighted to offer for sale a delightful 3-bedroom terraced house tucked away in the lushness of the semi-rural Bellingham area, Hexham. This characterful property successfully blends traditional aesthetics with modern comforts, making it a perfect abode for individuals who wish to enjoy countryside charm without sacrificing essential amenities.

The dwelling offers a thoughtfully designed floor plan spread over two floors. The ground floor is home to two spacious reception rooms, offering an ideal setting for both family time as well as entertaining. Thanks to larger windows, each room is bathed in natural light during the day and offers stunning views of the nearby greenery. The kitchen is well-equipped with essential appliances, worktops and ample storage space offering plenty of room for culinary exploration. The heart of the property is the fantastic kitchen-diner, with ample storage and a stunning range cooker, meaning cooking and entertaining can combine in a cosy atmosphere.

On the first floor, you'll find three inviting bedrooms each exuding a serene atmosphere perfect for relaxation, further complemented by the family bathroom's modern fixtures and fittings.

The property is rated EPC D and falls into Council Tax Band B, making it a cost-effective option for buyers. Additionally, you'll get to enjoy the pristine, semi-rural location that is Bellingham, providing the serenity and peace often found missing in bustling city lives. Despite the rural feel, the house is just a short drive away from Bellingham and its local shops, restaurants, schools, and other amenities, providing you with the best of both worlds.

Immerse yourself in the charm of rural living with this fantastic opportunity in Bellingham, Hexham. Contact Pattinson Estate Agents today for more information or to arrange a viewing. Don't miss your chance to own this beautiful home.

Council Tax Band: B

Tenure: Freehold

Price: Offers Over £200,000

Property Type: Terraced House

Parking: Off Street, On Street

Heating: Solid Fuel, Wood Burner

Living Room

4.40m x 4.24m (14'5" x 13'10")

uPVC window, central heating radiator, multi-fuel burner, natural wooden flooring.

Kitchen/Diner

4.36m x 3.10m (14'3" x 10'2")

uPVC double glazed window, central heating radiator, range cooker, wall and floor units.



Kitchen/Utility

2.29m x 3.58m (7'6" x 11'8")

uPVC double glazed window and back door, range of floor units, and space for washing machine.

Bedroom 1

4.31m x 3.18m (14'1" x 10'5")

Double room with uPVC double glazed window, central heating radiator.



Bedroom 2

4.61m x 3.55m (15'1" x 11'7")

Double room, uPVC double glazed window, central heating radiator.



Bedroom 3

2.41m x 1.89m (7'10" x 6'2")

Single room, uPVC double glazed window, central heating radiator.



Bathroom

1.03m x 2.03m (3'4" x 6'7")

White 3 piece suite, with pedestal sink, low lying toilet and walk-in shower, uPVC double glazed window, central heating radiator.



Externally

The property benefits from a garden to the front, and paved yard to the rear. There is an outbuilding to the rear housing the oil boiler, and the oil tank is located to the rear of the property.

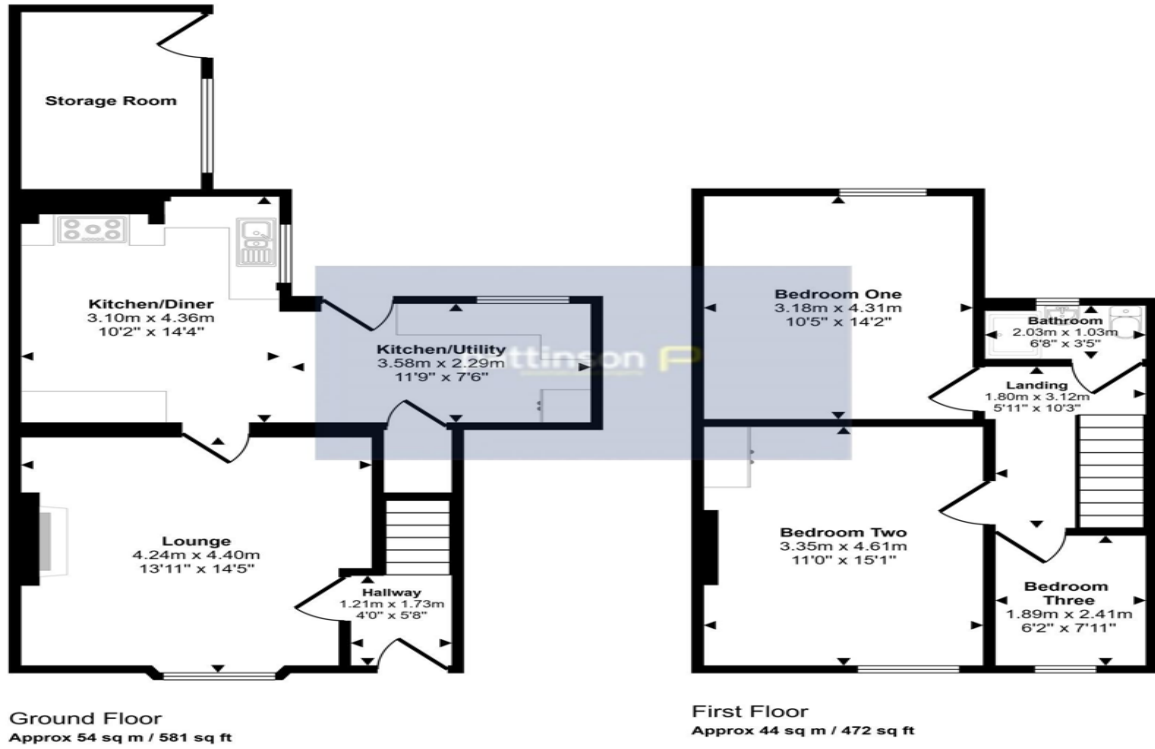


Information

The property sits within the Northumberland County Council boundary, and is located approximately 18 miles north of Hexham, which forms part of the Pennine Way. The property received a replacement roof approximately 2 years ago.



Approx Gross Internal Area
98 sq m / 1054 sq ft



This floorplan is only for illustrative purposes and is not to scale. Measurements of rooms, doors, windows, and any items are approximate and no responsibility is taken for any error, omission or mis-statement. Icons of items such as bathroom suites are representations only and may not look like the real items. Made with Made Snappy 360.

Energy Efficiency Rating		Current	Potential
Very energy efficient - lower running costs			
(92-100) A			
(81-91) B			85
(69-80) C			
(55-68) D		55	
(39-54) E			
(21-38) F			
(1-20) G			
Not energy efficient - higher running costs			
England, Scotland & Wales		EU Directive 2002/91/EC	

The Croft, Bellingham, Hexham, Northumberland, NE48 2JY

Contact your local branch today for more information on this property:

**15 Priestpopple, Hexham, Northumberland, Tyne & Wear, NE46 1PH, Tel: 01434 605376,
hexham@pattinson.co.uk, www.pattinson.co.uk**

These particulars, whilst believed to be accurate are set out as a general outline only for guidance and do not constitute any part of an offer or contract. Intending purchasers should not rely on them as statements of representation of fact, but must satisfy themselves by inspection or otherwise as to their accuracy. No person in this firm's employment has the authority to make or give any representation or warranty in respect of the property.

