



2 bed terraced house to buy in

Lancaster Terrace, Chester le street,
Chester le street, Durham, DH3 3NW

£125,000

 x2  x1  x2

Tenure

Freehold

On Street parking

Property features

- ✓ Two bedroom
- ✓ Terrace house
- ✓ Situated in Chester le street
- ✓ Close to local amenities
- ✓ EPC Rating C

Key Information

- ✓ Council Tax: Band A
- ✓ EPC Rating: C
- ✓ Heating supply: Air Source Heat Pump

Arrange a viewing

Sam Tollett
Senior Manager
Washington

0191 4154467
washington@pattinson.co.uk

- ✓ Flexible viewing slots
- ✓ Accompanied viewings

Description

Proudly presenting this charming two-bedroom terraced house, located in the highly sought-after area of Chester Le Street. This delightfully presented property offers an outstanding residential sale opportunity for both first-time buyers and investors alike.

The property comprises of two generous bedrooms, offering ample space and comfort. A single, well-appointed bathroom serves these rooms. The living area is split into two inviting reception rooms, each providing an ideal space for relaxation, entertainment, and family living.

This terraced house flawlessly blends traditional and contemporary elements, reflecting the charm and character of Chester Le Street. As you step inside this home, you'll be immediately captivated by its warm and welcoming atmosphere, combined with a layout designed for easy living and entertaining.

In terms of location, this residence benefits from the best of both worlds; nestled within a friendly neighbourhood only mere moments away from Chester Le Street's rich array of shops, restaurants, and local amenities.

This is a wonderful opportunity to secure a well-appointed and carefully maintained terraced house in a highly desirable location. Arrange your viewing today - this property is certain to attract significant interest.

Council Tax Band: A

Tenure: Freehold

Price: £125,000

Property Type: Terraced House

Parking: On Street

Heating: Air Source Heat Pump

Porch

Hall

Lounge

3.65m x 3.35m (11'11" x 10'11")



Dining room

3.76m x 3.52m (12'4" x 11'6")



Kitchen

6.38m x 2.21m (20'11" x 7'3")



Landing

Bathroom

2.37m x 1.65m (7'9" x 5'4")



Master bedroom

4.38m x 3.38m (14'4" x 11'1")



Bedroom two

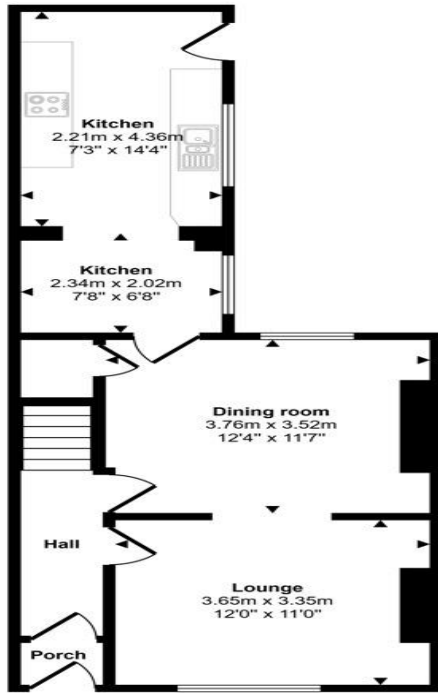
3.00m x 3.56m (9'10" x 11'8")



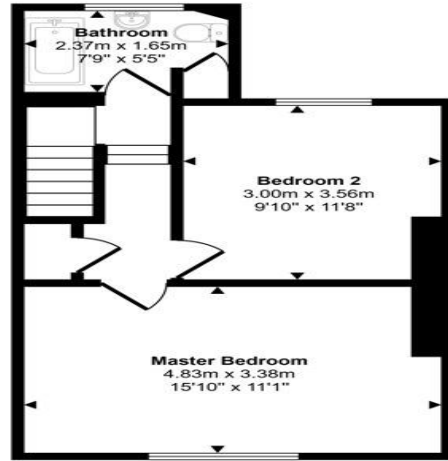
Rear yard



Approx Gross Internal Area
87 sq m / 932 sq ft



Ground Floor
Approx 48 sq m / 514 sq ft



First Floor
Approx 39 sq m / 418 sq ft

This floorplan is only for illustrative purposes and is not to scale. Measurements of rooms, doors, windows, and any items are approximate and no responsibility is taken for any error, omission or mis-statement. Icons of items such as bathroom suites are representations only and may not look like the real items. Made with Made Snappy 360.

Energy Efficiency Rating		Current	Potential
Very energy efficient - lower running costs			
(92-100) A			
(81-91) B			83
(69-80) C		69	
(55-68) D			
(39-54) E			
(21-38) F			
(1-20) G			
Not energy efficient - higher running costs			
England, Scotland & Wales		EU Directive 2002/91/EC	

Lancaster Terrace, Chester le street, Chester le street, Durham, DH3 3NW

Contact your local branch today for more information on this property:

55 The Galleries, Washington, Newcastle Upon Tyne, Tyne & Wear, NE38 7SA, Tel: 0191 4154467, Fax: 0191 4154313, washington@pattinson.co.uk, www.pattinson.co.uk

These particulars, whilst believed to be accurate are set out as a general outline only for guidance and do not constitute any part of an offer or contract. Intending purchasers should not rely on them as statements of representation of fact, but must satisfy themselves by inspection or otherwise as to their accuracy. No person in this firms employment has the authority to make or give any representation or warranty in respect of the property.

